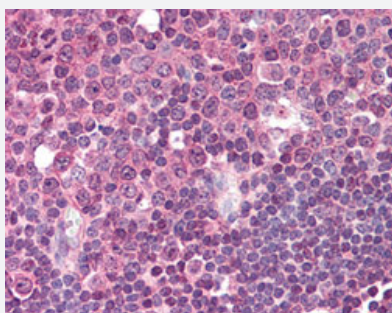


LAT2 monoclonal antibody, clone NAP-03

Catalog # MAB12943 Size 50 ug

Applications



Immunohistochemistry (Formalin/PFA-fixed paraffin-embedded sections)

Immunohistochemical staining (Formalin-fixed paraffin-embedded sections) of human tonsil with LAT2 monoclonal antibody, clone NAP-03 (Cat # MAB12943) at 5 ug/mL working concentration.

Specification

Product Description	Mouse monoclonal antibody raised against synthetic peptide of human LAT2.
Immunogen	A synthetic peptide (conjugated with KLH) corresponding to amino acids 196-212 of human LAT2.
Host	Mouse
Reactivity	Human
Form	Liquid
Purification	Protein A purification
Isotype	IgG2a
Recommend Usage	Immunohistochemistry (Formalin/PFA-fixed paraffin-embedded sections) (5 ug/mL) Immunoprecipitation (1-2 ug/mL) Western Blot (1-2 ug/mL) The optimal working dilution should be determined by the end user.
Storage Buffer	In PBS, pH 7.4 (0.09% sodium azide).
Storage Instruction	Store at 4°C. For long term storage store at -20°C. Aliquot to avoid repeated freezing and thawing.

Note

This product contains sodium azide: a POISONOUS AND HAZARDOUS SUBSTANCE which should be handled by trained staff only.

Applications

- Western Blot
- Immunohistochemistry (Formalin/PFA-fixed paraffin-embedded sections)

Immunohistochemical staining (Formalin-fixed paraffin-embedded sections) of human tonsil with LAT2 monoclonal antibody, clone NAP-03 (Cat # MAB12943) at 5 ug/mL working concentration.

- Immunoprecipitation

Gene Info — LAT2

Entrez GeneID [7462](#)

Protein Accession# [Q9GZY6](#)

Gene Name LAT2

Gene Alias HSPC046, LAB, NTAL, WBSCR15, WBSCR5, WSCR5

Gene Description linker for activation of T cells family, member 2

Omim ID [605719](#)

Gene Ontology [Hyperlink](#)

Gene Summary This gene is one of the contiguous genes at 7q11.23 commonly deleted in Williams syndrome, a multisystem developmental disorder. This gene consists of at least 14 exons, and its alternative splicing generates 3 transcript variants, all encoding the same protein. [provided by RefSeq]

Other Designations OTTHUMP00000160648|OTTHUMP00000179118|OTTHUMP00000179119|Williams-Beuren syndrome chromosome region 15|Williams-Beuren syndrome chromosome region 5|linker for activation of B cells|linker for activation of T cells family member 2|non-T cell activation lin