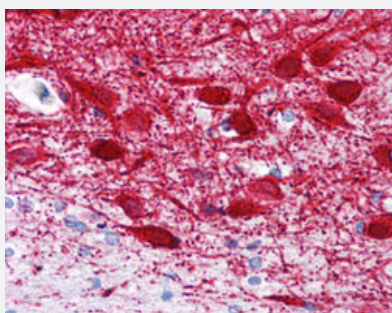


# MAP2 monoclonal antibody, clone MT-08

Catalog # MAB12941      Size 50 ug

## Applications



### Immunohistochemistry (Formalin/PFA-fixed paraffin-embedded sections)

Immunohistochemical staining (Formalin-fixed paraffin-embedded sections) of human cerebral cortex with MAP2 monoclonal antibody, clone MT-08 (Cat # MAB12941) at 10 ug/mL working concentration.

## Specification

<b>Product Description</b>	Mouse monoclonal antibody raised against bovine MAP2.
<b>Immunogen</b>	Bovine MAP2.
<b>Host</b>	Mouse
<b>Reactivity</b>	Bovine, Human
<b>Specificity</b>	This antibody recognizes amino acids 1375-1395 at central domain of molecule Microtubule Associated Protein 2ab (MAP2ab).
<b>Form</b>	Liquid
<b>Purification</b>	Protein A purification
<b>Isotype</b>	IgG1

<b>Recommend Usage</b>	ELISA Immunocytochemistry Immunohistochemistry (Frozen sections) Immunohistochemistry (Formalin/PFA-fixed paraffin-embedded sections) (10 ug/mL) Immunoprecipitation Western Blot The optimal working dilution should be determined by the end user.
<b>Storage Buffer</b>	In PBS, pH 7.4 (0.09% sodium azide).
<b>Storage Instruction</b>	Store at 4°C. For long term storage store at -20°C. Aliquot to avoid repeated freezing and thawing.
<b>Note</b>	This product contains sodium azide: a POISONOUS AND HAZARDOUS SUBSTANCE which should be handled by trained staff only.

## Applications

- Western Blot
- Immunohistochemistry (Formalin/PFA-fixed paraffin-embedded sections)  
Immunohistochemical staining (Formalin-fixed paraffin-embedded sections) of human cerebral cortex with MAP2 monoclonal antibody, clone MT-08 (Cat # MAB12941) at 10 ug/mL working concentration.
- Immunohistochemistry (Frozen sections)
- Immunocytochemistry
- Immunoprecipitation
- Enzyme-linked Immunoabsorbent Assay

## Gene Info — MAP2

<b>Entrez GeneID</b>	<a href="#">281294</a>
<b>Gene Name</b>	MAP2
<b>Gene Alias</b>	-
<b>Gene Description</b>	microtubule-associated protein 2
<b>Gene Ontology</b>	<a href="#">Hyperlink</a>

**Other Designations**microtubule associated protein 2C

---