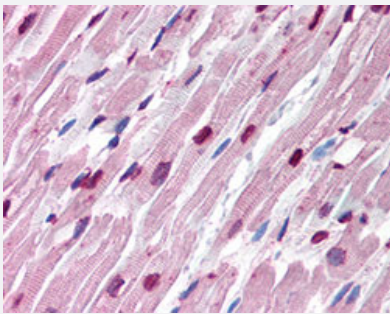


Alpha Tubulin monoclonal antibody, clone TU-16

Catalog # MAB12938 Size 50 ug

Applications



Immunohistochemistry (Formalin/PFA-fixed paraffin-embedded sections)

Immunohistochemical staining (Formalin-fixed paraffin-embedded sections) of human heart with Alpha Tubulin monoclonal antibody, clone TU-16 (Cat # MAB12938) at 10 ug/mL working concentration.

Specification

Product Description	Mouse monoclonal antibody raised against pig Alpha Tubulin.
Immunogen	Pig Alpha Tubulin.
Host	Mouse
Reactivity	Human, Pig
Specificity	Pig brain microtubule protein MTP-1.
Form	Liquid
Purification	Caprylic acid and ammonium sulfate precipitation
Isotype	IgM
Recommend Usage	ELISA Immunocytochemistry Immunohistochemistry (Formalin/PFA-fixed paraffin-embedded sections) (10 ug/mL) Immunoprecipitation (1-2 ug/mL) Western Blot (1-2 ug/mL) The optimal working dilution should be determined by the end user.

Storage Buffer	In PBS, pH 7.4 (0.09% sodium azide).
Storage Instruction	Store at 4°C. Do not freeze.
Note	This product contains sodium azide: a POISONOUS AND HAZARDOUS SUBSTANCE which should be handled by trained staff only.

Applications

- Western Blot
- Immunohistochemistry (Formalin/PFA-fixed paraffin-embedded sections)
Immunohistochemical staining (Formalin-fixed paraffin-embedded sections) of human heart with Alpha Tubulin monoclonal antibody, clone TU-16 (Cat # MAB12938) at 10 ug/mL working concentration.
- Immunocytochemistry
- Immunoprecipitation
- Enzyme-linked Immunoabsorbent Assay