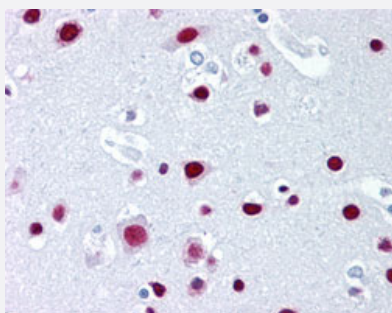


# SAFB monoclonal antibody, clone 6F7

Catalog # MAB12931      Size 50 uL

## Applications



### Immunohistochemistry (Formalin/PFA-fixed paraffin-embedded sections)

Immunohistochemical staining (Formalin-fixed paraffin-embedded sections) of human cerebral cortex with SAFB monoclonal antibody, clone 6F7 (Cat # MAB12931) at 5 ug/mL working concentration.

## Specification

<b>Product Description</b>	Mouse monoclonal antibody raised against synthetic peptide of human SAFB.
<b>Immunogen</b>	A synthetic peptide corresponding to amino acids 345-357 of human SAFB.
<b>Sequence</b>	PEARDSKEDGRKF
<b>Host</b>	Mouse
<b>Reactivity</b>	Human
<b>Form</b>	Liquid
<b>Purification</b>	Protein G purification
<b>Isotype</b>	IgG1
<b>Recommend Usage</b>	Immunofluorescence Immunohistochemistry (Formalin/PFA-fixed paraffin-embedded sections) (5 ug/mL) Immunoprecipitation Western Blot The optimal working dilution should be determined by the end user.
<b>Storage Buffer</b>	In PBS.

**Storage Instruction**

Store at 4°C. For long term storage store at -20°C.  
Aliquot to avoid repeated freezing and thawing.

## Applications

- Western Blot
- Immunohistochemistry (Formalin/PFA-fixed paraffin-embedded sections)

Immunohistochemical staining (Formalin-fixed paraffin-embedded sections) of human cerebral cortex with SAFB monoclonal antibody, clone 6F7 (Cat # MAB12931) at 5 ug/mL working concentration.

- Immunofluorescence
- Immunoprecipitation

## Gene Info — SAFB

**Entrez GeneID** [6294](#)

**Protein Accession#** [Q15424](#)

**Gene Name** SAFB

**Gene Alias** DKFZp779C1727, HAP, HET, SAFB1

**Gene Description** scaffold attachment factor B

**Omim ID** [602895](#)

**Gene Ontology** [Hyperlink](#)

**Gene Summary**

This gene encodes a DNA-binding protein that has high specificity for scaffold or matrix attachment region DNA elements (S/MAR DNA). This protein is thought to be involved in attaching the base of chromatin loops to the nuclear matrix but there is conflicting evidence as to whether this protein is a component of chromatin or a nuclear matrix protein. Scaffold attachment factors are a specific subset of nuclear matrix proteins (NMP) that specifically bind to S/MAR. This encoded protein is thought to serve as a molecular base to assemble a 'transcriptosome complex' in the vicinity of actively transcribed genes. It is involved in the regulation of the heat shock protein 27 transcription and also can act as an estrogen receptor corepressor. This gene is a candidate gene for breast tumorigenesis. [provided by RefSeq]

**Other Designations**

HSP27 ERE-TATA-binding protein|Hsp27 ERE-TATA binding protein|glutathione S-transferase fusion protein|heat-shock protein (HSP27) estrogen response element and TATA box-binding protein|scaffold attachment factor B1