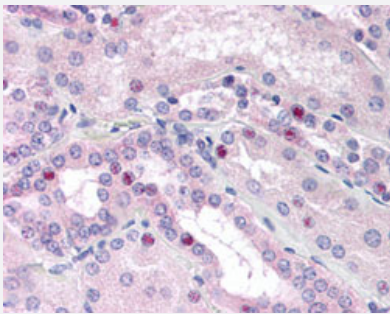


CEBPB monoclonal antibody, clone 21A1

Catalog # MAB12916 Size 50 uL

Applications



Immunohistochemistry (Formalin/PFA-fixed paraffin-embedded sections)

Immunohistochemical staining (Formalin-fixed paraffin-embedded sections) of human kidney with CEBPB monoclonal antibody, clone 21A1 (Cat # MAB12916) at 10 ug/mL working concentration.

Specification

Product Description	Mouse monoclonal antibody raised against human CEBPB.
Immunogen	Protein corresponding to amino acids 39-78 of human CEBPB.
Host	Mouse
Reactivity	Human
Form	Liquid
Purification	Protein G purification
Isotype	IgG
Recommend Usage	Immunohistochemistry (Formalin/PFA-fixed paraffin-embedded sections) (10 ug/mL) Immunoprecipitation Western Blot The optimal working dilution should be determined by the end user.
Storage Buffer	In PBS, pH 7.4.
Storage Instruction	Store at 4°C. For long term storage store at -20°C. Aliquot to avoid repeated freezing and thawing.

Applications

- Western Blot
- Immunohistochemistry (Formalin/PFA-fixed paraffin-embedded sections)

Immunohistochemical staining (Formalin-fixed paraffin-embedded sections) of human kidney with CEBPB monoclonal antibody, clone 21A1 (Cat # MAB12916) at 10 ug/mL working concentration.

- Immunoprecipitation

Gene Info — CEBPB

Entrez GeneID	1051
Protein Accession#	P17676
Gene Name	CEBPB
Gene Alias	C/EBP-beta, CRP2, IL6DBP, LAP, MGC32080, NF-IL6, TCF5
Gene Description	CCAAT/enhancer binding protein (C/EBP), beta
Omim ID	189965
Gene Ontology	Hyperlink
Gene Summary	The protein encoded by this intronless gene is a bZIP transcription factor which can bind as a homodimer to certain DNA regulatory regions. It can also form heterodimers with the related proteins CEBP-alpha, CEBP-delta, and CEBP-gamma. The encoded protein is important in the regulation of genes involved in immune and inflammatory responses and has been shown to bind to the IL-1 response element in the IL-6 gene, as well as to regulatory regions of several acute-phase and cytokine genes. In addition, the encoded protein can bind the promoter and upstream element and stimulate the expression of the collagen type I gene. [provided by RefSeq]
Other Designations	CCAAT/enhancer binding protein beta interleukin 6-dependent DNA-binding protein liver-enriched transcriptional activator protein nuclear factor of interleukin 6 transcription factor 5

Disease

- [Genetic Predisposition to Disease](#)
- [Obesity](#)