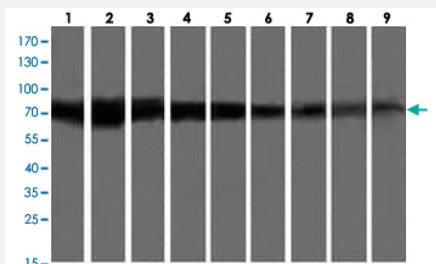


GLB1 monoclonal antibody, clone 10B2

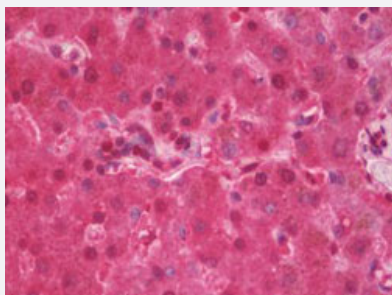
Catalog # MAB12856 Size 50 uL

Applications



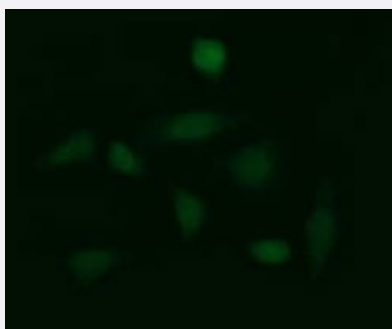
Western Blot (Cell lysate)

Western Blot analysis of Lane 1: HepG2 (human), Lane 2: HeLa (human), Lane 3: SVT2 (mouse), Lane 4: A549 (human), Lane 5: COS7 (monkey), Lane 6: Jurkat (human), Lane 7: MDCK (dog), Lane 8: PC12 (rat) and Lane 9: MCF7 (human) (35 ug/lane) with GLB1 monoclonal antibody, clone 10B2 (Cat # MAB12856).



Immunohistochemistry (Formalin/PFA-fixed paraffin-embedded sections)

Immunohistochemical staining (Formalin-fixed paraffin-embedded sections) of human liver with GLB1 monoclonal antibody, clone 10B2 (Cat # MAB12856) at 10 ug/mL working concentration.



Immunofluorescence

Immunofluorescent staining of HeLa cells with GLB1 monoclonal antibody, clone 10B2 (Cat # MAB12856).

Specification

Product Description

Mouse monoclonal antibody raised against full length recombinant human GLB1.

Immunogen

Recombinant protein corresponding to full length human GLB1.

Host	Mouse
Reactivity	Dog, Human, Monkey, Mouse, Rat
Form	Liquid
Purification	Protein A/G purification
Isotype	IgG1
Recommend Usage	Immunofluorescence (1:100) Immunohistochemistry (Formalin/PFA-fixed paraffin-embedded sections) (10 ug/mL) Western Blot (1:200-1:2000) The optimal working dilution should be determined by the end user.
Storage Buffer	In PBS, pH 7.3 (50% glycerol, 1% BSA, 0.02% sodium azide).
Storage Instruction	Store at -20°C. Aliquot to avoid repeated freezing and thawing.
Note	This product contains sodium azide: a POISONOUS AND HAZARDOUS SUBSTANCE which should be handled by trained staff only.

Applications

- Western Blot (Cell lysate)

Western Blot analysis of Lane 1: HepG2 (human), Lane 2: HeLa (human), Lane 3: SVT2 (mouse), Lane 4: A549 (human), Lane 5: COS7 (monkey), Lane 6: Jurkat (human), Lane 7: MDCK (dog), Lane 8: PC12 (rat) and Lane 9: MCF7 (human) (35 ug/lane) with GLB1 monoclonal antibody, clone 10B2 (Cat # MAB12856).

- Immunohistochemistry (Formalin/PFA-fixed paraffin-embedded sections)

Immunohistochemical staining (Formalin-fixed paraffin-embedded sections) of human liver with GLB1 monoclonal antibody, clone 10B2 (Cat # MAB12856) at 10 ug/mL working concentration.

- Immunofluorescence

Immunofluorescent staining of HeLa cells with GLB1 monoclonal antibody, clone 10B2 (Cat # MAB12856).

Gene Info — GLB1

Entrez GeneID	2720
Protein Accession#	P16278
Gene Name	GLB1

Gene Alias	EBP, ELNR1
Gene Description	galactosidase, beta 1
Omim ID	230500 611458
Gene Ontology	Hyperlink
Gene Summary	This gene encodes beta-galactosidase-1, a lysosomal enzyme that hydrolyzes the terminal beta-galactose from ganglioside substrates and other glycoconjugates. Defects in this gene are the cause of GM1-gangliosidosis and Morquio B syndrome. Multiple transcript variants encoding different isoforms have been found for this gene. [provided by RefSeq]
Other Designations	elastin receptor 1, 67kDa

Pathway

- [Galactose metabolism](#)
- [Glycosaminoglycan degradation](#)
- [Glycosphingolipid biosynthesis - ganglio series](#)
- [Lysosome](#)
- [Metabolic pathways](#)
- [Other glycan degradation](#)
- [Sphingolipid metabolism](#)

Disease

- [Tobacco Use Disorder](#)