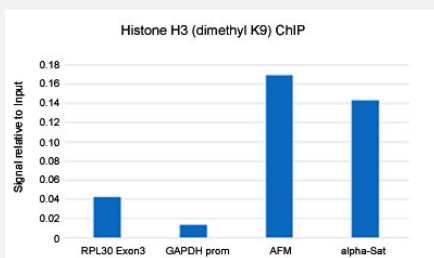


RecomAb™

# Histone H3 (dimethyl K9) monoclonal antibody, clone RM151

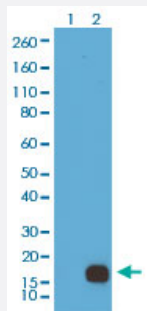
Catalog # MAB12842      Size 100 ug

## Applications



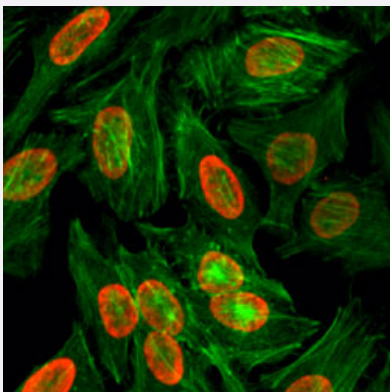
### ChIP

ChIP analysis of HeLa cells with Histone H3 (dimethyl K9) monoclonal antibody, clone RM151 (Cat # MAB12842) under 5 ug working concentration. Real-time PCR was performed using primers specific to the gene indicated.



### Western Blot

Western blot analysis of Lane 1: recombinant histone H3.3, Lane 2: HeLa cells using Histone H3 (dimethyl K9) monoclonal antibody, clone RM151 (Cat # MAB12842) under 0.5 ug/mL working concentration.



### Immunocytochemistry

Immunocytochemistry staining of HeLa cells treated with sodium butyrate using Histone H3 (dimethyl K9) monoclonal antibody, clone RM151 (Cat # MAB12842) (Red) under 2 ug/mL working concentration. Actin filaments were stained with fluorescein phalloidin (Green).

## Specification

Product Description	Rabbit recombinant monoclonal antibody raised against of human histone H3 (dimethyl K9).
Antibody Species	Rabbit
Immunogen	Original antibody is raised against a synthetic dimethyl peptide corresponding to residues surrounding K9 of human Histone H3.
Sequence	N/A
Specificity	This antibody reacts to histone H3 dimethylated at Lysine 9. No cross reactivity with monomethylated Lysine 9, trimethylated Lysine 9, or other methylations in histone H3.
Form	Liquid
Purification	Protein A affinity purification
Isotype	IgG
Recommend Usage	ChIP (2-10 ug/mL) ELISA (0.2-1 ug/mL) Immunocytochemistry (0.5-2 ug/mL) Western Blot (0.5-2 ug/mL) The optimal working dilution should be determined by the end user.
Storage Buffer	In PBS (50% glycerol, 1% BSA, 0.09% sodium azide)
Storage Instruction	Store at -20°C. Aliquot to avoid repeated freezing and thawing.
Note	This product contains sodium azide: a POISONOUS AND HAZARDOUS SUBSTANCE which should be handled by trained staff only.

## Applications

- ChIP

ChIP analysis of HeLa cells with Histone H3 (dimethyl K9) monoclonal antibody, clone RM151 (Cat # MAB12842) under 5 ug working concentration. Real-time PCR was performed using primers specific to the gene indicated.

- Western Blot

Western blot analysis of Lane 1: recombinant histone H3.3, Lane 2: HeLa cells using Histone H3 (dimethyl K9) monoclonal antibody, clone RM151 (Cat # MAB12842) under 0.5 ug/mL working concentration.

- Immunocytochemistry

Immunocytochemistry staining of HeLa cells treated with sodium butyrate using Histone H3 (dimethyl K9) monoclonal antibody, clone RM151 (Cat # MAB12842) (Red) under 2 ug/mL working concentration. Actin filaments were stained with fluorescein phalloidin (Green).

- Enzyme-linked Immunoabsorbent Assay

## Gene Info — HIST1H3A

**Entrez GeneID** [8350](#)

**Gene Name** HIST1H3A

**Gene Alias** H3/A, H3FA

**Gene Description** histone cluster 1, H3a

**Omim ID** [602810](#)

**Gene Ontology** [Hyperlink](#)

**Gene Summary** Histones are basic nuclear proteins that are responsible for the nucleosome structure of the chromosomal fiber in eukaryotes. This structure consists of approximately 146 bp of DNA wrapped around a nucleosome, an octamer composed of pairs of each of the four core histones (H2A, H2B, H3, and H4). The chromatin fiber is further compacted through the interaction of a linker histone, H1, with the DNA between the nucleosomes to form higher order chromatin structures. This gene is intronless and encodes a member of the histone H3 family. Transcripts from this gene lack polyA tails; instead, they contain a palindromic termination element. This gene is found in the large histone gene cluster on chromosome 6p22-p21.3. [provided by RefSeq]

**Other Designations** H3 histone family, member A|histone 1, H3a

## Pathway

- [Systemic lupus erythematosus](#)