

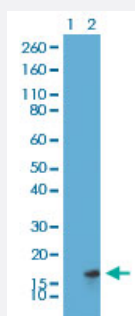
RecomAb™

# Histone H3 (acetyl K27) monoclonal antibody, clone RM172

Catalog # MAB12841

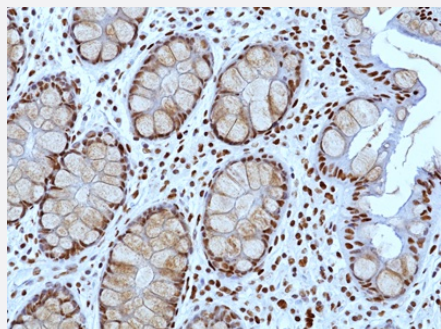
Size 100 ug

## Applications



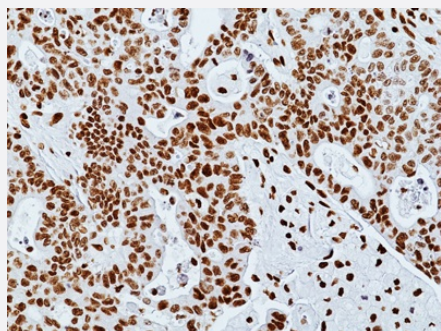
### Western Blot (Cell lysate)

Western blot analysis of Lane 1: HeLa cells, Lane 2: HeLa cells treated with sodium butyrate using Histone H3 (acetyl K27) monoclonal antibody, clone RM172 (Cat # MAB12841) under 1 ug/mL working concentration.



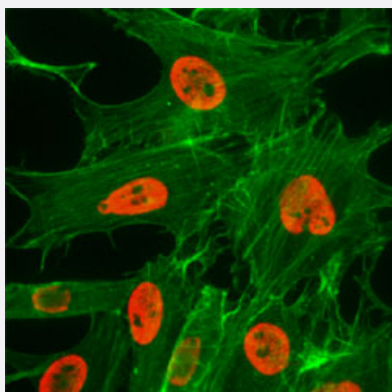
### Immunohistochemistry

Immunohistochemical staining of formalin fixed and paraffin embedded human colon tissue section using Histone H3 (acetyl K27) monoclonal antibody, clone RM172 (Cat# MAB12841) at a 1:2000 dilution.



### Immunohistochemistry

Immunohistochemical staining of formalin fixed and paraffin embedded human colon cancer tissue section using aHistone H3 (acetyl K27) monoclonal antibody, clone RM172 (Cat# MAB12841) at a 1:2000 dilution.



## Immunocytochemistry

Immunocytochemistry staining of HeLa cells treated with sodium butyrate using Histone H3 (acetyl K27) monoclonal antibody, clone RM172 (Cat # MAB12841) (Red) under 2 ug/mL working concentration. Actin filaments were stained with fluorescein phalloidin (Green).

## Specification

<b>Product Description</b>	Rabbit recombinant monoclonal antibody raised against of human histone H3 (acetyl K27).
<b>Antibody Species</b>	Rabbit
<b>Immunogen</b>	Original antibody is raised against a synthetic acetyl peptide corresponding to residues surrounding K27 of human Histone H3.
<b>Sequence</b>	N/A
<b>Specificity</b>	This antibody reacts to histone H3 acetylated at Lysine 27. No cross reactivity with other acetylated L ysines in histone H3.
<b>Form</b>	Liquid
<b>Purification</b>	Protein A affinity purification
<b>Isotype</b>	IgG
<b>Recommend Usage</b>	ELISA (0.2-1 ug/mL) Immunocytochemistry (0.5-2 ug/mL) Western Blot (0.5-2 ug/mL) The optimal working dilution should be determined by the end user.
<b>Storage Buffer</b>	In PBS (50% glycerol, 1% BSA, 0.09% sodium azide)
<b>Storage Instruction</b>	Store at -20°C. Aliquot to avoid repeated freezing and thawing.
<b>Note</b>	This product contains sodium azide: a POISONOUS AND HAZARDOUS SUBSTANCE which should be handled by trained staff only.

## Applications

- Western Blot (Cell lysate)

Western blot analysis of Lane 1: HeLa cells, Lane 2: HeLa cells treated with sodium butyrate using Histone H3 (acetyl K27) monoclonal antibody, clone RM172 (Cat # MAB12841) under 1 ug/mL working concentration.

- Immunohistochemistry

Immunohistochemical staining of formalin fixed and paraffin embedded human colon tissue section using Histone H3 (acetyl K27) monoclonal antibody, clone RM172 (Cat# MAB12841) at a 1:2000 dilution.

- Immunohistochemistry

Immunohistochemical staining of formalin fixed and paraffin embedded human colon cancer tissue section using aHistone H3 (acetyl K27) monoclonal antibody, clone RM172 (Cat# MAB12841) at a 1:2000 dilution.

- Immunocytochemistry

Immunocytochemistry staining of HeLa cells treated with sodium butyrate using Histone H3 (acetyl K27) monoclonal antibody, clone RM172 (Cat # MAB12841) (Red) under 2 ug/mL working concentration. Actin filaments were stained with fluorescein phalloidin (Green).

- Enzyme-linked Immunoabsorbent Assay

## Gene Info — HIST1H3A

Entrez GeneID [8350](#)

Gene Name HIST1H3A

Gene Alias H3/A, H3FA

Gene Description histone cluster 1, H3a

Omim ID [602810](#)

Gene Ontology [Hyperlink](#)

### Gene Summary

Histones are basic nuclear proteins that are responsible for the nucleosome structure of the chromosomal fiber in eukaryotes. This structure consists of approximately 146 bp of DNA wrapped around a nucleosome, an octamer composed of pairs of each of the four core histones (H2A, H2B, H3, and H4). The chromatin fiber is further compacted through the interaction of a linker histone, H1, with the DNA between the nucleosomes to form higher order chromatin structures. This gene is intronless and encodes a member of the histone H3 family. Transcripts from this gene lack polyA tails; instead, they contain a palindromic termination element. This gene is found in the large histone gene cluster on chromosome 6p22-p21.3. [provided by RefSeq]

**Other Designations**

H3 histone family, member A|histone 1, H3a

**Pathway**

- [Systemic lupus erythematosus](#)