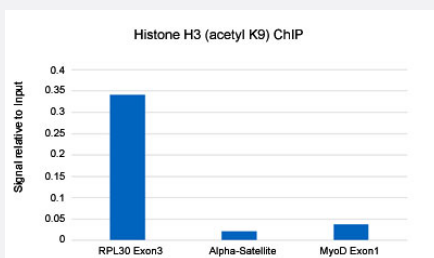


RecomAb™

# Histone H3 (acetyl K9) monoclonal antibody, clone RM161

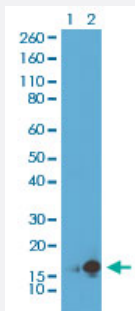
Catalog # MAB12839      Size 100 ug

## Applications



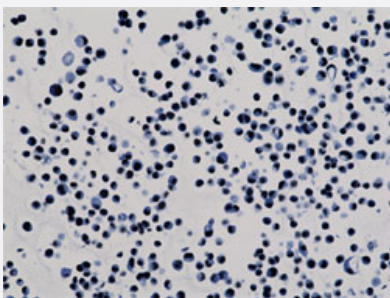
### ChIP

ChIP analysis of HeLa cells with Histone H3 (acetyl K9) monoclonal antibody, clone RM161 (Cat # MAB12839) under 5 ug working concentration. Real-time PCR was performed using primers specific to the gene indicated.



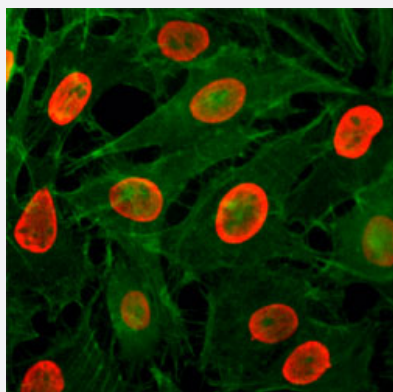
### Western Blot (Cell lysate)

Western blot analysis of Lane 1: HeLa cells, Lane 2: HeLa cells treated with sodium butyrate using Histone H3 (acetyl K9) monoclonal antibody, clone RM161 (Cat # MAB12839) under 0.25 ug/mL working concentration.



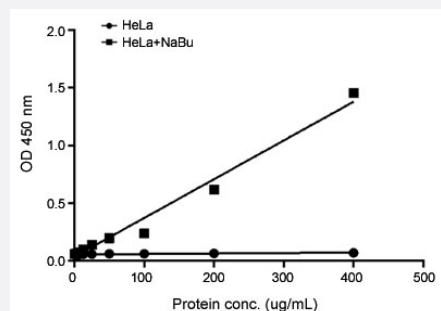
### Immunohistochemistry (Formalin/PFA-fixed paraffin-embedded sections)

Immunohistochemical staining (Formalin-fixed paraffin-embedded sections) of HepG2 cells with Histone H3 (acetyl K9) monoclonal antibody, clone RM161 (Cat # MAB12839) under 0.5 ug/mL working concentration.



### Immunocytochemistry

Immunocytochemistry staining of HeLa cells treated with sodium butyrate using Histone H3 (acetyl K9) monoclonal antibody, clone RM161 (Cat # MAB12839) (Red) under 1 ug/mL working concentration. Actin filaments were stained with fluorescein phalloidin (Green).



### Enzyme-linked Immunoabsorbent Assay

Sandwich ELISA analysis of HeLa cells treated or untreated with sodium butyrate using Histone H3 (acetyl K9) monoclonal antibody, clone RM161 (Cat # MAB12839) as the detection antibody under 1 ug/mL working concentration. Using biotinylated format of Pan Histone H3 monoclonal antibody, clone RM188 (Cat # MAB12804) as the capture antibody under 1 ug/mL working concentration.

## Specification

Product Description	Rabbit recombinant monoclonal antibody raised against of human histone H3 (acetyl K9).
Antibody Species	Rabbit
Immunogen	Original antibody is raised against a synthetic acetyl peptide corresponding to residues surrounding K9 of human Histone H3.
Sequence	N/A
Specificity	This antibody reacts to histone H3 acetylated at Lysine 9. No cross reactivity with other acetylated Lysines in histone H3.
Form	Liquid
Purification	Protein A affinity purification
Isotype	IgG
Recommend Usage	ChIP (2-10 ug/mL) ELISA (0.2-1 ug/mL) Immunocytochemistry (0.5-2 ug/mL) Immunohistochemistry (0.1-1 ug/mL) Western Blot (0.25-1 ug/mL) The optimal working dilution should be determined by the end user.

Storage Buffer	In PBS (50% glycerol, 1% BSA, 0.09% sodium azide)
Storage Instruction	Store at -20°C. Aliquot to avoid repeated freezing and thawing.
Note	This product contains sodium azide: a POISONOUS AND HAZARDOUS SUBSTANCE which should be handled by trained staff only.

## Applications

- ChIP

ChIP analysis of HeLa cells with Histone H3 (acetyl K9) monoclonal antibody, clone RM161 (Cat # MAB12839) under 5 ug working concentration. Real-time PCR was performed using primers specific to the gene indicated.

- Western Blot (Cell lysate)

Western blot analysis of Lane 1: HeLa cells, Lane 2: HeLa cells treated with sodium butyrate using Histone H3 (acetyl K9) monoclonal antibody, clone RM161 (Cat # MAB12839) under 0.25 ug/mL working concentration.

- Immunohistochemistry (Formalin/PFA-fixed paraffin-embedded sections)

Immunohistochemical staining (Formalin-fixed paraffin-embedded sections) of HepG2 cells with Histone H3 (acetyl K9) monoclonal antibody, clone RM161 (Cat # MAB12839) under 0.5 ug/mL working concentration.

- Immunocytochemistry

Immunocytochemistry staining of HeLa cells treated with sodium butyrate using Histone H3 (acetyl K9) monoclonal antibody, clone RM161 (Cat # MAB12839) (Red) under 1 ug/mL working concentration. Actin filaments were stained with fluorescein phalloidin (Green).

- Enzyme-linked Immunoabsorbent Assay

Sandwich ELISA analysis of HeLa cells treated or untreated with sodium butyrate using Histone H3 (acetyl K9) monoclonal antibody, clone RM161 (Cat # MAB12839) as the detection antibody under 1 ug/mL working concentration. Using biotinylated format of Pan Histone H3 monoclonal antibody, clone RM188 (Cat # MAB12804) as the capture antibody under 1 ug/mL working concentration.

## Gene Info — HIST1H3A

Entrez GeneID	<a href="#">8350</a>
Gene Name	HIST1H3A
Gene Alias	H3/A, H3FA
Gene Description	histone cluster 1, H3a

Omim ID [602810](#)

Gene Ontology [Hyperlink](#)

**Gene Summary**

Histones are basic nuclear proteins that are responsible for the nucleosome structure of the chromosomal fiber in eukaryotes. This structure consists of approximately 146 bp of DNA wrapped around a nucleosome, an octamer composed of pairs of each of the four core histones (H2A, H2B, H3, and H4). The chromatin fiber is further compacted through the interaction of a linker histone, H1, with the DNA between the nucleosomes to form higher order chromatin structures. This gene is intronless and encodes a member of the histone H3 family. Transcripts from this gene lack polyA tails; instead, they contain a palindromic termination element. This gene is found in the large histone gene cluster on chromosome 6p22-p21.3. [provided by RefSeq]

Other Designations H3 histone family, member A|histone 1, H3a

## Pathway

- [Systemic lupus erythematosus](#)