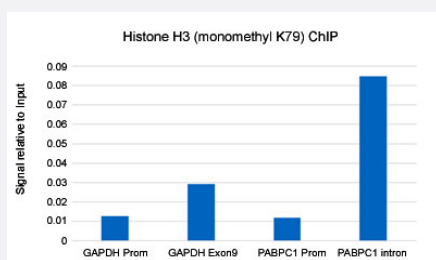


RecomAb™

# Histone H3 (monomethyl K79) monoclonal antibody, clone RM147

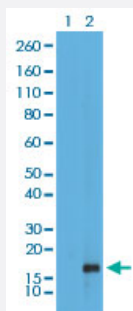
Catalog # MAB12838      Size 100 ug

## Applications



### ChIP

ChIP analysis of HeLa cells with Histone H3 (monomethyl K79) monoclonal antibody, clone RM147 (Cat # MAB12838) under 5 ug working concentration. Real-time PCR was performed using primers specific to the gene indicated.



### Western Blot

Western blot analysis of Lane 1: recombinant histone H3.3, Lane 2: HeLa cells using Histone H3 (monomethyl K79) monoclonal antibody, clone RM147 (Cat # MAB12838) under 0.5 ug/mL working concentration.

## Specification

<b>Product Description</b>	Rabbit recombinant monoclonal antibody raised against of human histone H3 (monomethyl K79).
<b>Antibody Species</b>	Rabbit
<b>Immunogen</b>	Original antibody is raised against a synthetic monomethyl peptide corresponding to residues surrounding K79 of human Histone H3.
<b>Sequence</b>	N/A
<b>Specificity</b>	This antibody reacts to histone H3 monomethylated at Lysine 79. No cross reactivity with dimethylated Lysine 79 or trimethylated Lysine 79, or other methylations in histone H3.

Form	Liquid
Purification	Protein A affinity purification
Isotype	IgG
Recommend Usage	ChIP (2-10 ug/mL) ELISA (0.2-1 ug/mL) Western Blot (0.2-1 ug/mL) The optimal working dilution should be determined by the end user.
Storage Buffer	In PBS (50% glycerol, 1% BSA, 0.09% sodium azide)
Storage Instruction	Store at -20°C. Aliquot to avoid repeated freezing and thawing.
Note	This product contains sodium azide: a POISONOUS AND HAZARDOUS SUBSTANCE which should be handled by trained staff only.

## Applications

- ChIP

ChIP analysis of HeLa cells with Histone H3 (monomethyl K79) monoclonal antibody, clone RM147 (Cat # MAB12838) under 5 ug working concentration. Real-time PCR was performed using primers specific to the gene indicated.

- Western Blot

Western blot analysis of Lane 1: recombinant histone H3.3, Lane 2: HeLa cells using Histone H3 (monomethyl K79) monoclonal antibody, clone RM147 (Cat # MAB12838) under 0.5 ug/mL working concentration.

- Enzyme-linked Immunoabsorbent Assay

## Gene Info — HIST1H3A

Entrez GeneID	<a href="#">8350</a>
Gene Name	HIST1H3A
Gene Alias	H3/A, H3FA
Gene Description	histone cluster 1, H3a
Omim ID	<a href="#">602810</a>
Gene Ontology	<a href="#">Hyperlink</a>

**Gene Summary**

Histones are basic nuclear proteins that are responsible for the nucleosome structure of the chromosomal fiber in eukaryotes. This structure consists of approximately 146 bp of DNA wrapped around a nucleosome, an octamer composed of pairs of each of the four core histones (H2A, H2B, H3, and H4). The chromatin fiber is further compacted through the interaction of a linker histone, H1, with the DNA between the nucleosomes to form higher order chromatin structures. This gene is intronless and encodes a member of the histone H3 family. Transcripts from this gene lack polyA tails; instead, they contain a palindromic termination element. This gene is found in the large histone gene cluster on chromosome 6p22-p21.3. [provided by RefSeq]

**Other Designations**

H3 histone family, member A|histone 1, H3a

**Pathway**

- [Systemic lupus erythematosus](#)