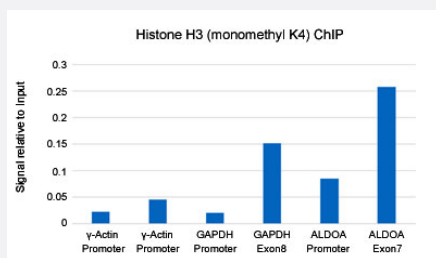


RecomAb™

# Histone H3 (monomethyl K4) monoclonal antibody, clone RM140

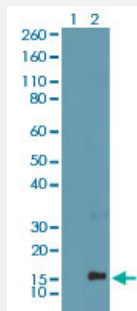
Catalog # MAB12831      Size 100 ug

## Applications



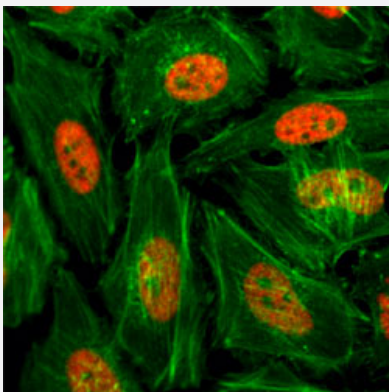
### ChIP

ChIP analysis of HeLa cells with Histone H3 (monomethyl K4) monoclonal antibody, clone RM140 (Cat # MAB12831) under 5 ug working concentration. Real-time PCR was performed using primers specific to the gene indicated.



### Western Blot

Western blot analysis of Lane 1: recombinant histone H3.3, Lane 2: HeLa cells using Histone H3 (monomethyl K4) monoclonal antibody, clone RM140 (Cat # MAB12831) under 0.5 ug/mL working concentration.



### Immunocytochemistry

Immunocytochemistry staining of HeLa cells treated with sodium butyrate using Histone H3 (monomethyl K4) monoclonal antibody, clone RM140 (Cat # MAB12831) (Red) under 2 ug/mL working concentration. Actin filaments were stained with fluorescein phalloidin (Green).

## Specification

<b>Product Description</b>	Rabbit recombinant monoclonal antibody raised against of human histone H3 (monomethyl K4).
<b>Antibody Species</b>	Rabbit
<b>Immunogen</b>	Original antibody is raised against a synthetic monomethyl peptide corresponding to residues surrounding K4 of human Histone H3.
<b>Sequence</b>	N/A
<b>Specificity</b>	This antibody reacts to histone H3 monomethylated at Lysine 4. No cross reactivity with dimethylated Lysine 4, trimethylated Lysine 4, or other methylations in histone H3.
<b>Form</b>	Liquid
<b>Purification</b>	Protein A affinity purification
<b>Isotype</b>	IgG
<b>Recommend Usage</b>	ChIP (2-10 ug/mL) ELISA (0.2-1 ug/mL) Immunocytochemistry (1-2 ug/mL) Western Blot (0.2-1 ug/mL) The optimal working dilution should be determined by the end user.
<b>Storage Buffer</b>	In PBS (50% glycerol, 1% BSA, 0.09% sodium azide)
<b>Storage Instruction</b>	Store at -20°C. Aliquot to avoid repeated freezing and thawing.
<b>Note</b>	This product contains sodium azide: a POISONOUS AND HAZARDOUS SUBSTANCE which should be handled by trained staff only.

## Applications

- ChIP

ChIP analysis of HeLa cells with Histone H3 (monomethyl K4) monoclonal antibody, clone RM140 (Cat # MAB12831) under 5 ug working concentration. Real-time PCR was performed using primers specific to the gene indicated.

- Western Blot

Western blot analysis of Lane 1: recombinant histone H3.3, Lane 2: HeLa cells using Histone H3 (monomethyl K4) monoclonal antibody, clone RM140 (Cat # MAB12831) under 0.5 ug/mL working concentration.

- Immunocytochemistry

Immunocytochemistry staining of HeLa cells treated with sodium butyrate using Histone H3 (monomethyl K4) monoclonal antibody, clone RM140 (Cat # MAB12831) (Red) under 2 ug/mL working concentration. Actin filaments were stained with fluorescein phalloidin (Green).

- Enzyme-linked Immunoabsorbent Assay

## Gene Info — HIST1H3A

Entrez GeneID	<a href="#">8350</a>
Gene Name	HIST1H3A
Gene Alias	H3/A, H3FA
Gene Description	histone cluster 1, H3a
Omim ID	<a href="#">602810</a>
Gene Ontology	<a href="#">Hyperlink</a>
Gene Summary	Histones are basic nuclear proteins that are responsible for the nucleosome structure of the chromosomal fiber in eukaryotes. This structure consists of approximately 146 bp of DNA wrapped around a nucleosome, an octamer composed of pairs of each of the four core histones (H2A, H2B, H3, and H4). The chromatin fiber is further compacted through the interaction of a linker histone, H1, with the DNA between the nucleosomes to form higher order chromatin structures. This gene is intronless and encodes a member of the histone H3 family. Transcripts from this gene lack polyA tails; instead, they contain a palindromic termination element. This gene is found in the large histone gene cluster on chromosome 6p22-p21.3. [provided by RefSeq]
Other Designations	H3 histone family, member A histone 1, H3a

## Pathway

- [Systemic lupus erythematosus](#)