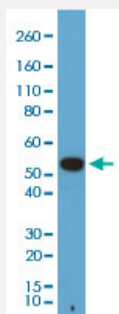


RecomAb™

# alpha-Tubulin monoclonal antibody, clone RM113

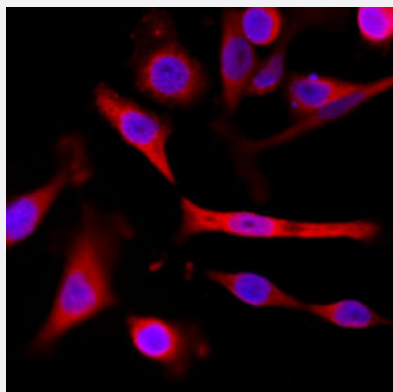
Catalog # MAB12827      Size 100 uL

## Applications



### Western Blot (Cell lysate)

Western blot analysis of A431 cells using alpha-Tubulin monoclonal antibody, clone RM113 (Cat # MAB12827) at 1:1000 dilution.



### Immunocytochemistry

Immunocytochemistry staining of A431 cells with alpha-Tubulin monoclonal antibody, clone RM113 (Cat # MAB12827) (Red) at 1:200 dilution. Nuclear DNA was stained with DAPI (Blue).

## Specification

<b>Product Description</b>	Rabbit recombinant monoclonal antibody raised against of human alpha-Tubulin.
<b>Antibody Species</b>	Rabbit
<b>Immunogen</b>	Original antibody is raised against a synthetic peptide corresponding to C-terminus region of human alpha-tubulin.
<b>Sequence</b>	N/A
<b>Specificity</b>	This antibody reacts to alpha-Tubulin, including Tubulin alpha-1A chain and Tubulin alpha-1B chain.

Form	Liquid
Purification	Protein A affinity purification
Isotype	IgG
Recommend Usage	ELISA Flow Cytometry Immunocytochemistry (1:200) Immunohistochemistry (1:200) Immunoprecipitation (1:200) Western Blot (1:1000) The optimal working dilution should be determined by the end user.
Storage Buffer	In PBS (50% glycerol, 1% BSA, 0.09% sodium azide)
Storage Instruction	Store at -20°C. Aliquot to avoid repeated freezing and thawing.
Note	This product contains sodium azide: a POISONOUS AND HAZARDOUS SUBSTANCE which should be handled by trained staff only.

## Applications

- Western Blot (Cell lysate)

Western blot analysis of A431 cells using alpha-Tubulin monoclonal antibody, clone RM113 (Cat # MAB12827) at 1:1000 dilution.

- Immunohistochemistry

- Immunocytochemistry

Immunocytochemistry staining of A431 cells with alpha-Tubulin monoclonal antibody, clone RM113 (Cat # MAB12827) (Red) at 1:200 dilution. Nuclear DNA was stained with DAPI (Blue).

- Immunoprecipitation

- Enzyme-linked Immunoabsorbent Assay

- Flow Cytometry

## Gene Info — TUBA1A

Entrez GeneID [7846](#)

Gene Name	TUBA1A
Gene Alias	B-ALPHA-1, FLJ25113, LIS3, TUBA3
Gene Description	tubulin, alpha 1a
Omim ID	<a href="#">602529 611603</a>
Gene Ontology	<a href="#">Hyperlink</a>
Gene Summary	<p>Microtubules of the eukaryotic cytoskeleton perform essential and diverse functions and are composed of a heterodimer of alpha and beta tubulins. The genes encoding these microtubule constituents belong to the tubulin superfamily, which is composed of six distinct families. Genes from the alpha, beta and gamma tubulin families are found in all eukaryotes. The alpha and beta tubulins represent the major components of microtubules, while gamma tubulin plays a critical role in the nucleation of microtubule assembly. There are multiple alpha and beta tubulin genes, which are highly conserved among species. This gene encodes alpha tubulin and is highly similar to mouse and rat Tuba1 gene. Northern blotting studies have shown that the gene expression is predominantly found in morphologically differentiated neurologic cells. This gene is one of three alpha-tubulin genes in a cluster on chromosome 12q. [provided by RefSeq]</p>
Other Designations	hum-a-tub1 hum-a-tub2 tubulin, alpha 3 tubulin, alpha, brain-specific

## Gene Info — TUBA1B

Entrez GeneID	<a href="#">10376</a>
Gene Name	TUBA1B
Gene Alias	K-ALPHA-1
Gene Description	tubulin, alpha 1b
Omim ID	<a href="#">602530</a>
Gene Ontology	<a href="#">Hyperlink</a>
Gene Summary	O
Other Designations	alpha tubulin tubulin, alpha, ubiquitous

## Publication Reference

- [Intralumenal docking of Connexin 36 channels in the ER isolates mis-trafficked protein.](#)

Stephan Tetenborg, Viktoria Liss, Leonhard Breitsprecher, Ksenia Timonina, Anna Kotova, Alejandra Jesús Acevedo Harnacker, Chunxu Yuan, Eyad Shihabeddin, Fatemeh Ariakia, Guoting Qin, Cai Chengzhi, Karin Dedek, Georg Zoidl, Michael Hensel, John O'Brien.

The Journal of Biological Chemistry 2023 Sep; 105282.

Application: WB, Human, HEK293T cells

## Pathway

- [Gap junction](#)
- [Gap junction](#)
- [Pathogenic Escherichia coli infection - EHEC](#)
- [Pathogenic Escherichia coli infection - EHEC](#)

## Disease

- [Lissencephaly](#)
- [Mental Disorders](#)
- [Neuropsychological Tests](#)
- [Schizophrenia](#)