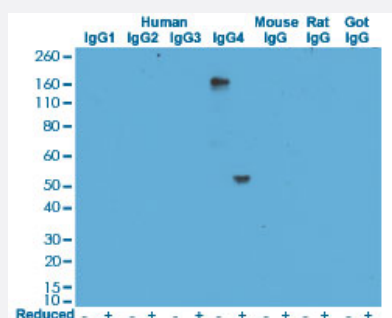


RecomAb™

Human IgG4 monoclonal antibody, clone RM120

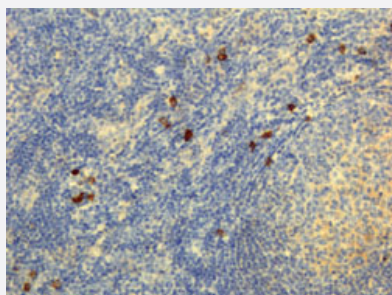
Catalog # MAB12821 Size 100 ug

Applications



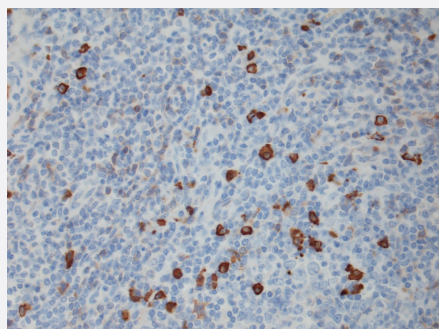
Western Blot

Western blot analysis of human, mouse, rat, and goat IgG using Human IgG4 monoclonal antibody, clone RM120 (Cat # MAB12821) under 0.5 ug/mL working concentration.



Immunohistochemistry (Formalin/PFA-fixed paraffin-embedded sections)

Immunohistochemical staining (Formalin-fixed paraffin-embedded sections) of human lymphoid tissue with Human IgG4 monoclonal antibody, clone RM120 (Cat # MAB12821) under 5 ug/mL working concentration.

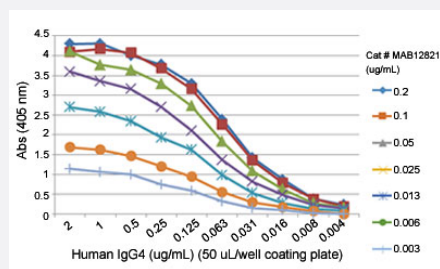


Immunohistochemistry

Immunohistochemical staining of FFPE Tonsil tissue sections using Human IgG4 monoclonal antibody, clone RM120 (Cat# MAB12821) at a 1:50,000 dilution.

Enzyme-linked Immunoabsorbent Assay

Sandwich ELISA using Human IgG4 monoclonal antibody, clone RM120 (Cat# MAB12821) as the capture antibody, and Human Ig light chain monoclonal antibody, clone RM129 (Biotin) (Cat# MAB12811) as the detection antibody, followed by an AP conjugated streptavidin.



Enzyme-linked Immunoabsorbent Assay

ELISA analysis of Human IgG4 monoclonal antibody, clone RM120 (Cat # MAB12821) at the following concentrations: 0.2 ug/mL, 0.1 ug/mL, 0.05 ug/mL, 0.025 ug/mL, 0.013 ug/mL, 0.006 ug/mL, 0.003 ug/mL. The plate was coated with 50 uL/well different amounts of human IgG4. An alkaline phosphatase conjugated anti-rabbit IgG as the secondary antibody.

Enzyme-linked Immunoabsorbent Assay

ELISA showing Human IgG4 monoclonal antibody, clone RM120 (Cat# MAB12821) does not react to monkey IgG. The plate was coated with Rhesus monkey IgG. A serial dilution of Cat# MAB12821 and a monkey IgG binding antibody (positive control) was used as the detection antibody.

Enzyme-linked Immunoabsorbent Assay

Detection of human IgG4 in monkey serum. Sandwich ELISA using Human IgG4 monoclonal antibody, clone RM120 (Cat# MAB12821) as the capture antibody, and Human Ig light chain monoclonal antibody, clone RM129 (Biotin) (Cat# MAB12811) as the detection antibody, followed by a HRP conjugated streptavidin.

Specification

Product Description	Rabbit recombinant monoclonal antibody raised against of human IgG4.
Antibody Species	Rabbit
Immunogen	Original antibody is raised against a synthetic peptide corresponding to the hinge region of human Ig G4.
Sequence	N/A
Reactivity	Human
Specificity	This antibody reacts to the heavy chain of human IgG4. No cross reactivity with human IgG1, IgG2, Ig G3, IgM, IgA, IgD, IgE, mouse IgG, rat IgG, or goat IgG.
Form	Liquid

Purification	Protein A affinity purification
Isotype	IgG
Recommend Usage	ELISA (0.05-0.2 ug/mL for detection; 0.05-0.2 ug/well for capture) Flow Cytometry Immunocytochemistry (1-10 ug/mL) Immunohistochemistry (1-10 ug/mL) Western Blot (0.5-2 ug/mL) The optimal working dilution should be determined by the end user.
Storage Buffer	In PBS (50% glycerol, 1% BSA, 0.09% sodium azide)
Storage Instruction	Store at -20°C. Aliquot to avoid repeated freezing and thawing.
Note	This product contains sodium azide: a POISONOUS AND HAZARDOUS SUBSTANCE which should be handled by trained staff only.

Applications

- Western Blot

Western blot analysis of human, mouse, rat, and goat IgG using Human IgG4 monoclonal antibody, clone RM120 (Cat # MAB12821) under 0.5 ug/mL working concentration.

- Immunohistochemistry (Formalin/PFA-fixed paraffin-embedded sections)

Immunohistochemical staining (Formalin-fixed paraffin-embedded sections) of human lymphoid tissue with Human IgG4 monoclonal antibody, clone RM120 (Cat # MAB12821) under 5 ug/mL working concentration.

- Immunohistochemistry

Immunohistochemical staining of FFPE Tonsil tissue sections using Human IgG4 monoclonal antibody, clone RM120 (Cat# MAB12821) at a 1:50,000 dilution.

- Immunocytochemistry

- Enzyme-linked Immunoabsorbent Assay

Sandwich ELISA using Human IgG4 monoclonal antibody, clone RM120 (Cat# MAB12821) as the capture antibody, and Human Ig light chain monoclonal antibody, clone RM129 (Biotin) (Cat# MAB12811) as the detection antibody, followed by an AP conjugated streptavidin.

- Enzyme-linked Immunoabsorbent Assay

ELISA analysis of Human IgG4 monoclonal antibody, clone RM120 (Cat # MAB12821) at the following concentrations: 0.2 ug/mL, 0.1 ug/mL, 0.05 ug/mL, 0.025 ug/mL, 0.013 ug/mL, 0.006 ug/mL, 0.003 ug/mL. The plate was coated with 50 uL/well different amounts of human IgG4. An alkaline phosphatase conjugated anti-rabbit IgG as the secondary antibody.

- Enzyme-linked Immunoabsorbent Assay

ELISA showing Human IgG4 monoclonal antibody, clone RM120 (Cat# MAB12821) does not react to monkey IgG. The plate was coated with Rhesus monkey IgG. A serial dilution of Cat# MAB12821 and a monkey IgG binding antibody (positive control) was used as the detection antibody.

- Enzyme-linked Immunoabsorbent Assay

Detection of human IgG4 in monkey serum. Sandwich ELISA using Human IgG4 monoclonal antibody, clone RM120 (Cat# MAB12821) as the capture antibody, and Human Ig light chain monoclonal antibody, clone RM129 (Biotin) (Cat# MAB12811) as the detection antibody, followed by a HRP conjugated streptavidin.

- Flow Cytometry

Gene Info — IGHG4

Entrez GeneID	3503
Protein Accession#	P01861
Gene Name	IGHG4
Gene Alias	MGC117419
Gene Description	immunoglobulin heavy constant gamma 4 (G4m marker)
Omim ID	147130
Gene Ontology	Hyperlink
Other Designations	-

Publication Reference

- [Epstein-Barr Virus Lytic Reactivation Induces IgG4 Production by Host B Lymphocytes in Graves' Disease Patients and Controls: A Subset of Graves' Disease Is an IgG4-Related Disease-Like Condition.](#)

Nagata K, Hara S, Nakayama Y, Higaki K, Sugihara H, Kuwamoto S, Matsushita M, Kato M, Tanio S, Ishiguro K, Hayashi K. Viral Immunology 2018 Oct; 31(8):540.

Application: IF, IHC, Human, PBMCs, Thyroid gland