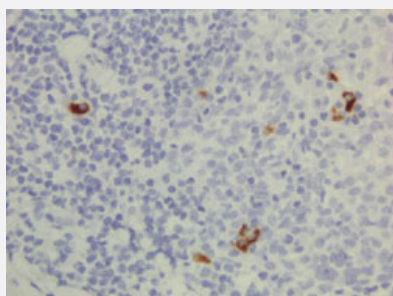


RecomAb™

# Human IgG3 monoclonal antibody, clone RM119

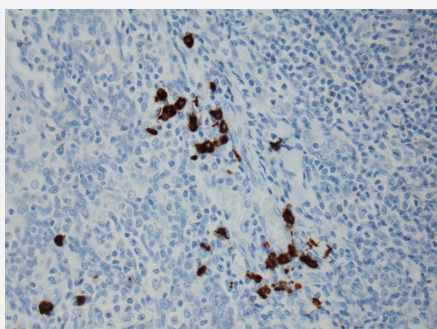
Catalog # MAB12820      Size 100 ug

## Applications



### Immunohistochemistry (Formalin/PFA-fixed paraffin-embedded sections)

Immunohistochemical staining (Formalin-fixed paraffin-embedded sections) of human lymphoid tissue with Human IgG3 monoclonal antibody, clone RM119 (Cat # MAB12820) under 1 ug/mL working concentration.



### Immunohistochemistry

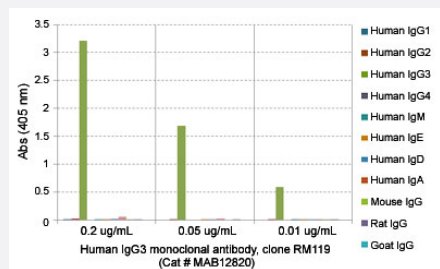
Immunohistochemical staining of FFPE Tonsil tissue sections using Human IgG3 monoclonal antibody, clone RM119 (Cat# MAB12820) at a 1:2000 dilution.

### Enzyme-linked Immunoabsorbent Assay

A titer ELISA using Human IgG3 monoclonal antibody, clone RM119 (Cat# MAB12820). The plate was coated with different amounts of human IgG3. A serial dilution of Cat# MAB12820 was used as the primary antibody, followed by an alkaline phosphatase conjugated anti-rabbit IgG as the secondary antibody.

### Enzyme-linked Immunoabsorbent Assay

Detection of human IgG3 in monkey serum. Sandwich ELISA using Human IgG3 monoclonal antibody, clone RM119 (Cat# MAB12820) as the capture antibody, and Human Ig light chain monoclonal antibody, clone RM129 (Biotin) (Cat# MAB12811) as the detection antibody, followed by a HRP conjugated streptavidin.



## Enzyme-linked Immunoabsorbent Assay

ELISA analysis of Human IgG3 monoclonal antibody, clone RM119 (Cat # MAB12820) at the following concentrations: 0.2 ug/mL, 0.05 ug/mL, 0.01 ug/mL. The plate was coated with 50 ng/well of different immunoglobulins and the result shows this antibody reacts to human IgG3; no cross reactivity human IgG1, IgG2, IgG4, IgE, IgA, or IgD, mouse IgG, rat IgG, or goat IgG. An alkaline phosphatase conjugated anti-rabbit IgG as the secondary antibody.

## Enzyme-linked Immunoabsorbent Assay

Sandwich ELISA using Human IgG3 monoclonal antibody, clone RM119 (Cat# MAB12820) as the capture antibody (100ng/well), and Human Ig light chain monoclonal antibody, clone RM129 (Biotin) (Cat# MAB12811) as the detection antibody, followed by an HRP conjugated streptavidin.

## Enzyme-linked Immunoabsorbent Assay

ELISA showing Human IgG3 monoclonal antibody, clone RM119 (Cat# MAB12820) does not react to monkey IgG. The plate was coated with Rhesus monkey IgG. A serial dilution of Cat# MAB12820 and a monkey IgG binding antibody (positive control) was used as the detection antibody.

## Specification

Product Description	Rabbit recombinant monoclonal antibody raised against human IgG3.
Antibody Species	Rabbit
Immunogen	Original antibody is raised against human IgG3.
Sequence	N/A
Reactivity	Human
Specificity	This antibody reacts to the heavy chain of human IgG3. No cross reactivity with human IgG1, IgG2, IgG4, IgM, IgA, IgD, IgE, mouse IgG, rat IgG, or goat IgG.
Form	Liquid
Purification	Protein A affinity purification

Isotype	IgG
Recommend Usage	ELISA (0.05-0.2 ug/mL for detection; 0.05-0.2 ug/well for capture) Flow Cytometry Immunocytochemistry (0.5-2 ug/mL) Immunohistochemistry (0.5-2 ug/mL) The optimal working dilution should be determined by the end user.
Storage Buffer	In PBS (50% glycerol, 1% BSA, 0.09% sodium azide)
Storage Instruction	Store at -20°C. Aliquot to avoid repeated freezing and thawing.
Note	This product contains sodium azide: a POISONOUS AND HAZARDOUS SUBSTANCE which should be handled by trained staff only.

## Applications

- Immunohistochemistry (Formalin/PFA-fixed paraffin-embedded sections)

Immunohistochemical staining (Formalin-fixed paraffin-embedded sections) of human lymphoid tissue with Human IgG3 monoclonal antibody, clone RM119 (Cat # MAB12820) under 1 ug/mL working concentration.

- Immunohistochemistry

Immunohistochemical staining of FFPE Tonsil tissue sections using Human IgG3 monoclonal antibody, clone RM119 (Cat# MAB12820) at a 1:2000 dilution.

- Immunocytochemistry

- Enzyme-linked Immunoabsorbent Assay

A titer ELISA using Human IgG3 monoclonal antibody, clone RM119 (Cat# MAB12820). The plate was coated with different amounts of human IgG3. A serial dilution of Cat# MAB12820 was used as the primary antibody, followed by an alkaline phosphatase conjugated anti-rabbit IgG as the secondary antibody.

- Enzyme-linked Immunoabsorbent Assay

Detection of human IgG3 in monkey serum. Sandwich ELISA using Human IgG3 monoclonal antibody, clone RM119 (Cat# MAB12820) as the capture antibody, and Human Ig light chain monoclonal antibody, clone RM129 (Biotin) (Cat# MAB12811) as the detection antibody, followed by a HRP conjugated streptavidin.

- Enzyme-linked Immunoabsorbent Assay

ELISA analysis of Human IgG3 monoclonal antibody, clone RM119 (Cat # MAB12820) at the following concentrations: 0.2 ug/mL, 0.05 ug/mL, 0.01 ug/mL. The plate was coated with 50 ng/well of different immunoglobulins and the result shows this antibody reacts to human IgG3; no cross reactivity human IgG1, IgG2, IgG4, IgE, IgA, or IgD, mouse IgG, rat IgG, or goat IgG. An alkaline phosphatase conjugated anti-rabbit IgG as the secondary antibody.

- Enzyme-linked Immunoabsorbent Assay

Sandwich ELISA using Human IgG3 monoclonal antibody, clone RM119 (Cat# MAB12820) as the capture antibody (100ng/well), and Human Ig light chain monoclonal antibody, clone RM129 (Biotin) (Cat# MAB12811) as the detection antibody, followed by an HRP conjugated streptavidin.

- Enzyme-linked Immunoabsorbent Assay

ELISA showing Human IgG3 monoclonal antibody, clone RM119 (Cat# MAB12820) does not react to monkey IgG. The plate was coated with Rhesus monkey IgG. A serial dilution of Cat# MAB12820 and a monkey IgG binding antibody (positive control) was used as the detection antibody.

- Flow Cytometry

## Gene Info — IGHG3

Entrez GeneID	<a href="#">3502</a>
Protein Accession#	<a href="#">P01860</a>
Gene Name	IGHG3
Gene Alias	DKFZp686H11213, FLJ39988, FLJ40036, FLJ40253, FLJ40587, FLJ40789, FLJ40834, IgG3, MGC45809
Gene Description	immunoglobulin heavy constant gamma 3 (G3m marker)
Omim ID	<a href="#">147120</a>
Gene Ontology	<a href="#">Hyperlink</a>
Other Designations	-

## Disease

- [Asthma](#)