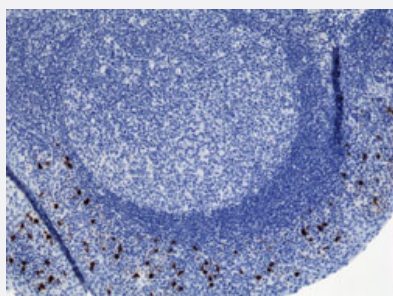


RecomAb™

# Human IgA2 monoclonal antibody, clone RM125

Catalog # MAB12815      Size 100 ug

## Applications



### Immunohistochemistry (Formalin/PFA-fixed paraffin-embedded sections)

Immunohistochemical staining (Formalin-fixed paraffin-embedded sections) of human tonsil tissue with Human IgA2 monoclonal antibody, clone RM125 (Cat # MAB12815) under 1 ug/mL working concentration.

### Enzyme-linked Immunoabsorbent Assay

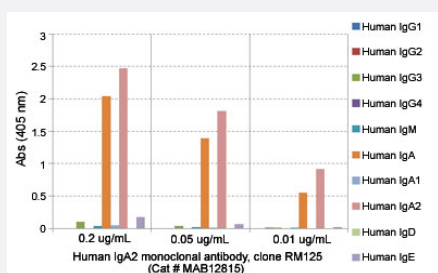
A titer ELISA using Human IgA2 monoclonal antibody, clone RM125 (Cat# MAB12815). The plate was coated with different amounts of human IgA2. A serial dilution of Cat# MAB12815 was used as the primary antibody. An alkaline phosphatase conjugated anti-rabbit IgG as the secondary antibody.

### Enzyme-linked Immunoabsorbent Assay

ELISA analysis of Human IgA2 monoclonal antibody, clone RM125 (Cat # MAB12815) at the following concentrations: 0.2 ug/mL, 0.05 ug/mL, 0.01 ug/mL. The plate was coated with 50 ng/well of different immunoglobulins and the result shows this antibody reacts to human IgA2; no cross reactivity human IgG, IgM, IgD, or IgE. An alkaline phosphatase conjugated anti-rabbit IgG as the secondary antibody.

### Enzyme-linked Immunoabsorbent Assay

Sandwich ELISA using Human IgA2 monoclonal antibody, clone RM125 (Cat# MAB12815) as the capture antibody (100ng/well), and Human Ig light chain monoclonal antibody, clone RM129 (Biotin) (Cat# MAB12811) as the detection antibody, followed by an alkaline phosphatase conjugated streptavidin.



## Enzyme-linked Immunoabsorbent Assay

Sandwich ELISA using Human IgA2 monoclonal antibody, clone RM125 (Cat# MAB12815) as the capture antibody (100ng/well), and Human Ig light chain monoclonal antibody, clone RM129 (Biotin) (Cat# MAB12811) as the detection antibody, followed by an alkaline phosphatase conjugated streptavidin.

### Specification

<b>Product Description</b>	Rabbit recombinant monoclonal antibody raised against human IgA2.
<b>Antibody Species</b>	Rabbit
<b>Immunogen</b>	Original antibody is raised against human IgA2.
<b>Sequence</b>	N/A
<b>Reactivity</b>	Human
<b>Specificity</b>	This antibody reacts to human IgA2. No cross reactivity with human IgA1, IgG, IgM, IgD, or IgE.
<b>Form</b>	Liquid
<b>Purification</b>	Protein A affinity purification
<b>Isotype</b>	IgG
<b>Recommend Usage</b>	ELISA (0.05-0.2 ug/mL for detection; 0.05-0.2 ug/well for capture) Flow Cytometry Immunocytochemistry (0.5-2 ug/mL) Immunohistochemistry (0.1-1 ug/mL) The optimal working dilution should be determined by the end user.
<b>Storage Buffer</b>	In PBS (50% glycerol, 1% BSA, 0.09% sodium azide)
<b>Storage Instruction</b>	Store at -20°C. Aliquot to avoid repeated freezing and thawing.
<b>Note</b>	This product contains sodium azide: a POISONOUS AND HAZARDOUS SUBSTANCE which should be handled by trained staff only.

### Applications

- Immunohistochemistry (Formalin/PFA-fixed paraffin-embedded sections)

Immunohistochemical staining (Formalin-fixed paraffin-embedded sections) of human tonsil tissue with Human IgA2 monoclonal antibody, clone RM125 (Cat # MAB12815) under 1 ug/mL working concentration.

- Immunocytochemistry

- Enzyme-linked Immunoabsorbent Assay

A titer ELISA using Human IgA2 monoclonal antibody, clone RM125 (Cat# MAB12815). The plate was coated with different amounts of human IgA2. A serial dilution of Cat# MAB12815 was used as the primary antibody. An alkaline phosphatase conjugated anti-rabbit IgG as the secondary antibody.

- Enzyme-linked Immunoabsorbent Assay

ELISA analysis of Human IgA2 monoclonal antibody, clone RM125 (Cat # MAB12815) at the following concentrations: 0.2 ug/mL, 0.05 ug/mL, 0.01 ug/mL. The plate was coated with 50 ng/well of different immunoglobulins and the result shows this antibody reacts to human IgA2; no cross reactivity human IgG, IgM, IgD, or IgE. An alkaline phosphatase conjugated anti-rabbit IgG as the secondary antibody.

- Enzyme-linked Immunoabsorbent Assay

Sandwich ELISA using Human IgA2 monoclonal antibody, clone RM125 (Cat# MAB12815) as the capture antibody (100ng/well), and Human Ig light chain monoclonal antibody, clone RM129 (Biotin) (Cat# MAB12811) as the detection antibody, followed by an alkaline phosphatase conjugated streptavidin.

- Enzyme-linked Immunoabsorbent Assay

Sandwich ELISA using Human IgA2 monoclonal antibody, clone RM125 (Cat# MAB12815) as the capture antibody (100ng/well), and Human Ig light chain monoclonal antibody, clone RM129 (Biotin) (Cat# MAB12811) as the detection antibody, followed by an alkaline phosphatase conjugated streptavidin.

- Flow Cytometry

## Gene Info — IGHA2

Entrez GeneID [3494](#)

Protein Accession# [P01877](#)

Gene Name IGHA2

Gene Alias -

Gene Description immunoglobulin heavy constant alpha 2 (A2m marker)

Omim ID [147000](#)

Gene Ontology [Hyperlink](#)

Other Designations

-