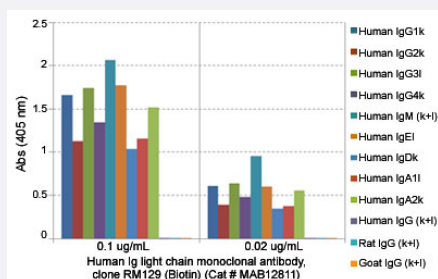


RecomAb™

Human Ig light chain monoclonal antibody, clone RM129 (Biotin)

Catalog # MAB12811 Size 50 ug

Applications



Enzyme-linked Immunoabsorbent Assay

ELISA analysis of Human Ig light chain monoclonal antibody, clone RM129 (Biotin) (Cat # MAB12811) at the following concentrations: 0.1 ug/mL, 0.02 ug/mL. The plate was coated with 50 ng/well of different immunoglobulins and the result shows this antibody reacts to both kappa and lambda light chains of human immunoglobulins; no cross reactivity with mouse, rat, or goat immunoglobulin light chain. An alkaline phosphatase conjugated anti-rabbit IgG as the secondary antibody.

Enzyme-linked Immunoabsorbent Assay

A titer Sandwich ELISA using Human Ig light chain monoclonal antibody, clone RM129 (Biotin) (Cat# MAB12811) as the detection antibody. The plate, coated with the Cat# MAB12811, was loaded with different amounts of human IgG. A serial dilution of Cat# MAB12811 was used as the detection antibody, followed by an alkaline phosphatase conjugated streptavidin.

Enzyme-linked Immunoabsorbent Assay

ELISA showing Human Ig light chain monoclonal antibody, clone RM129 (Biotin) (Cat# MAB12811) does not react to monkey IgG. The plate was coated with Rhesus monkey IgG. A serial dilution of Cat# MAB12811 and a monkey IgG binding antibody (positive control) was used as the detection antibody.

Enzyme-linked Immunoabsorbent Assay

Detection of human IgG1 in monkey serum, using Cat# MAB12810 (capture) and Human Ig light chain monoclonal antibody, clone RM129 (Biotin) (Cat# MAB12811) (detection) as a Sandwich ELISA pair. HRP conjugated streptavidin and TMB were used to yield the colorimetric reaction.

Specification

Product Description	Rabbit recombinant monoclonal antibody raised against human Ig light chain.
Antibody Species	Rabbit
Immunogen	Original antibody is raised against human IgG.
Sequence	N/A
Reactivity	Human
Specificity	This antibody reacts to both kappa and lambda light chains of human immunoglobulins. No cross reactivity with mouse, rat, or goat immunoglobulin light chain.
Form	Liquid
Conjugation	Biotin
Purification	Protein A affinity purification
Isotype	IgG
Recommend Usage	ELISA (0.02-0.2 ug/mL) Flow Cytometry Immunocytochemistry (0.5-2 ug/mL) Immunohistochemistry (0.5-2 ug/mL) The optimal working dilution should be determined by the end user.
Storage Buffer	In PBS (50% glycerol, 1% BSA, 0.09% sodium azide)
Storage Instruction	Store at -20°C. Aliquot to avoid repeated freezing and thawing.
Note	This product contains sodium azide: a POISONOUS AND HAZARDOUS SUBSTANCE which should be handled by trained staff only.

Applications

- Immunohistochemistry

- Immunocytochemistry

- Enzyme-linked Immunoabsorbent Assay

ELISA analysis of Human Ig light chain monoclonal antibody, clone RM129 (Biotin) (Cat # MAB12811) at the following concentrations: 0.1 ug/mL, 0.02 ug/mL. The plate was coated with 50 ng/well of different immunoglobulins and the result shows this antibody reacts to both kappa and lambda light chains of human immunoglobulins; no cross reactivity with mouse, rat, or goat immunoglobulin light chain. An alkaline phosphatase conjugated anti-rabbit IgG as the secondary antibody.

- Enzyme-linked Immunoabsorbent Assay

A titer Sandwich ELISA using Human Ig light chain monoclonal antibody, clone RM129 (Biotin) (Cat# MAB12811) as the detection antibody. The plate, coated with the Cat# MAB12811, was loaded with different amounts of human IgG. A serial dilution of Cat# MAB12811 was used as the detection antibody, followed by an alkaline phosphatase conjugated streptavidin.

- Enzyme-linked Immunoabsorbent Assay

ELISA showing Human Ig light chain monoclonal antibody, clone RM129 (Biotin) (Cat# MAB12811) does not react to monkey IgG. The plate was coated with Rhesus monkey IgG. A serial dilution of Cat# MAB12811 and a monkey IgG binding antibody (positive control) was used as the detection antibody.

- Enzyme-linked Immunoabsorbent Assay

Detection of human IgG1 in monkey serum, using Cat# MAB12810 (capture) and Human Ig light chain monoclonal antibody, clone RM129 (Biotin) (Cat# MAB12811) (detection) as a Sandwich ELISA pair. HRP conjugated streptavidin and TMB were used to yield the colorimetric reaction.

- Flow Cytometry

Gene Info — IGKC

Entrez GeneID	3514
Gene Name	IGKC
Gene Alias	HCAK1, Km, MGC111575, MGC62011, MGC72072, MGC88770, MGC88771, MGC88809
Gene Description	immunoglobulin kappa constant
Omim ID	147200
Gene Ontology	Hyperlink

Other Designations

-

Gene Info — IGLC1

Entrez GeneID

[3537](#)

Gene Name

IGLC1

Gene Alias

IGLC

Gene Description

immunoglobulin lambda constant 1 (Mcg marker)

Omim ID

[147220](#)

Gene Ontology

[Hyperlink](#)

Other Designations

-

Disease

- [Dermatomyositis](#)
- [Genetic Predisposition to Disease](#)
- [Helicobacter Infections](#)
- [Polymyositis](#)
- [Purpura](#)
- [Sarcoidosis](#)