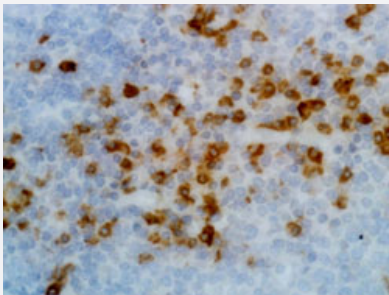


RecomAb™

# Human Ig kappa light chain monoclonal antibody, clone RM126

Catalog # MAB12809      Size 100 ug

## Applications



### Immunohistochemistry (Formalin/PFA-fixed paraffin-embedded sections)

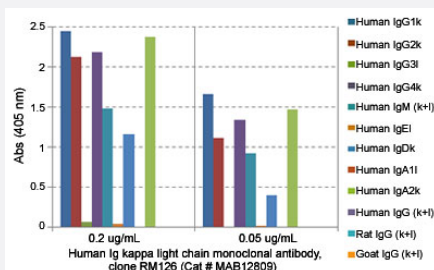
Immunohistochemical staining (Formalin-fixed paraffin-embedded sections) of human tonsil tissue with Human Ig kappa light chain monoclonal antibody, clone RM126 (Cat # MAB12809) under 1 ug/mL working concentration.

### Enzyme-linked Immunoabsorbent Assay

A titer ELISA using Human Ig kappa light chain monoclonal antibody, clone RM126 (Cat# MAB12809). The plate was coated with different amounts of human IgG4κ. A serial dilution of Cat# MAB12809 was used as the primary antibody, followed by an alkaline phosphatase conjugated anti-rabbit IgG as the secondary antibody.

### Enzyme-linked Immunoabsorbent Assay

ELISA analysis of Human Ig kappa light chain monoclonal antibody, clone RM126 (Cat # MAB12809) at the following concentrations: 0.2 ug/mL, 0.05 ug/mL. The plate was coated with 50 ng/well of different immunoglobulins and the result shows this antibody reacts to the kappa light chain of human immunoglobulins; no cross reactivity with the lambda light chain, mouse IgG, rat IgG, or goat IgG. An alkaline phosphatase conjugated anti-rabbit IgG as the secondary antibody.



## Enzyme-linked Immunoabsorbent Assay

ELISA showing Human Ig kappa light chain monoclonal antibody, clone RM126 (Cat# MAB12809) does not react to monkey IgG. The plate was coated with Rhesus monkey IgG. A serial dilution of Cat# MAB12809 and a monkey IgG binding antibody (positive control) was used as the detection antibody.

### Specification

<b>Product Description</b>	Rabbit recombinant monoclonal antibody raised against human Ig kappa light chain.
<b>Antibody Species</b>	Rabbit
<b>Immunogen</b>	Original antibody is raised against human IgG.
<b>Sequence</b>	N/A
<b>Reactivity</b>	Human
<b>Specificity</b>	This antibody reacts to the kappa light chain of human immunoglobulins. No cross reactivity with the lambda light chain, mouse IgG, rat IgG, or goat IgG.
<b>Form</b>	Liquid
<b>Purification</b>	Protein A affinity purification
<b>Isotype</b>	IgG
<b>Recommend Usage</b>	ELISA (0.05-0.2 ug/mL) Flow Cytometry Immunocytochemistry (0.5-2 ug/mL) Immunohistochemistry (0.5-2 ug/mL) The optimal working dilution should be determined by the end user.
<b>Storage Buffer</b>	In PBS (50% glycerol, 1% BSA, 0.09% sodium azide)
<b>Storage Instruction</b>	Store at -20°C. Aliquot to avoid repeated freezing and thawing.
<b>Note</b>	This product contains sodium azide: a POISONOUS AND HAZARDOUS SUBSTANCE which should be handled by trained staff only.

## Applications

- Immunohistochemistry (Formalin/PFA-fixed paraffin-embedded sections)

Immunohistochemical staining (Formalin-fixed paraffin-embedded sections) of human tonsil tissue with Human Ig kappa light chain monoclonal antibody, clone RM126 (Cat # MAB12809) under 1 ug/mL working concentration.

- Immunocytochemistry

- Enzyme-linked Immunoabsorbent Assay

A titer ELISA using Human Ig kappa light chain monoclonal antibody, clone RM126 (Cat# MAB12809). The plate was coated with different amounts of human IgG4k. A serial dilution of Cat# MAB12809 was used as the primary antibody, followed by an alkaline phosphatase conjugated anti-rabbit IgG as the secondary antibody.

- Enzyme-linked Immunoabsorbent Assay

ELISA analysis of Human Ig kappa light chain monoclonal antibody, clone RM126 (Cat # MAB12809) at the following concentrations: 0.2 ug/mL, 0.05 ug/mL. The plate was coated with 50 ng/well of different immunoglobulins and the result shows this antibody reacts to the kappa light chain of human immunoglobulins; no cross reactivity with the lambda light chain, mouse IgG, rat IgG, or goat IgG. An alkaline phosphatase conjugated anti-rabbit IgG as the secondary antibody.

- Enzyme-linked Immunoabsorbent Assay

ELISA showing Human Ig kappa light chain monoclonal antibody, clone RM126 (Cat# MAB12809) does not react to monkey IgG. The plate was coated with Rhesus monkey IgG. A serial dilution of Cat# MAB12809 and a monkey IgG binding antibody (positive control) was used as the detection antibody.

- Flow Cytometry

## Gene Info — IGKC

Entrez GeneID	<a href="#">3514</a>
Gene Name	IGKC
Gene Alias	HCAK1, Km, MGC111575, MGC62011, MGC72072, MGC88770, MGC88771, MGC88809
Gene Description	immunoglobulin kappa constant
Omim ID	<a href="#">147200</a>
Gene Ontology	<a href="#">Hyperlink</a>
Other Designations	-

## Disease

- [Dermatomyositis](#)
- [Genetic Predisposition to Disease](#)
- [Helicobacter Infections](#)
- [Polymyositis](#)
- [Purpura](#)
- [Sarcoidosis](#)