

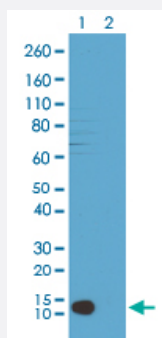
RecomAb™

# Histone H4 (trimethyl K20) monoclonal antibody, clone RM208

Catalog # MAB12799

Size 100 ug

## Applications



### Western Blot

Western blot analysis of Lane 1: acid extracts of HeLa cell and Lane 2: recombinant Histone H4 with Histone H4 (trimethyl K20) monoclonal antibody, clone RM208 (Cat # MAB12799) at 1 ug/mL working concentration, showed a band of Histone H4 trimethylated at Lysine 20.

**This product contains sodium azide: a POISONOUS AND HAZARDOUS SUBSTANCE which should be handled by trained staff only.**

This product contains sodium azide: a POISONOUS AND HAZARDOUS SUBSTANCE which should be handled by trained staff only.

Histone H4 (trimethyl K20) monoclonal antibody, clone RM208 (Cat# MAB12799) specifically reacts to Histone H4 trimethylated at Lysine 20 (K20me3). May slightly cross react to dimethylated Lysine 20 (K20me2) at higher concentrations. No cross reactivity with non-modified Lysine 20, monomethylated Lysine 20 (K20me1), or other methylations in histone H4.

## Specification

Product Description	Rabbit recombinant monoclonal antibody raised against of human histone H4 (trimethyl K20).
Antibody Species	Rabbit
Immunogen	Original antibody is raised against a synthetic trimethyl peptide corresponding to residues surrounding K20 of human Histone H4.

Sequence	N/A
Specificity	This antibody reacts to Histone H4 trimethylated at Lysine 20. It may slightly cross react to dimethylated Lysine 20 at a higher concentration. No cross reactivity with non-modified Lysine 20, monomethylated Lysine 20, or other methylations in histone H4.
Form	Liquid
Purification	Protein A purification
Isotype	IgG
Recommend Usage	ELISA (0.5 ug/mL-1 ug/mL) Western Blot (1 ug/mL-2 ug/mL) The optimal working dilution should be determined by the end user.
Storage Buffer	In PBS (50% glycerol, 1% BSA, 0.09% sodium azide)
Storage Instruction	Store at -20°C. Aliquot to avoid repeated freezing and thawing.
Note	<p>This product contains sodium azide: a POISONOUS AND HAZARDOUS SUBSTANCE which should be handled by trained staff only.</p> <p>This product contains sodium azide: a POISONOUS AND HAZARDOUS SUBSTANCE which should be handled by trained staff only.</p> <p>Histone H4 (trimethyl K20) monoclonal antibody, clone RM208 (Cat# MAB12799) specifically reacts to Histone H4 trimethylated at Lysine 20 (K20me3). May slightly cross react to dimethylated Lysine 20 (K20me2) at higher concentrations. No cross reactivity with non-modified Lysine 20, monomethylated Lysine 20 (K20me1), or other methylations in histone H4.</p>

## Applications

- Western Blot

Western blot analysis of Lane 1: acid extracts of HeLa cell and Lane 2: recombinant Histone H4 with Histone H4 (trimethyl K20) monoclonal antibody, clone RM208 (Cat # MAB12799) at 1 ug/mL working concentration, showed a band of Histone H4 trimethylated at Lysine 20.

- Enzyme-linked Immunoabsorbent Assay

## Gene Info — HIST4H4

Entrez GeneID	<a href="#">121504</a>
Protein Accession#	<a href="#">P62805</a>
Gene Name	HIST4H4

Gene Alias	H4/p, MGC24116
Gene Description	histone cluster 4, H4
Gene Ontology	<a href="#">Hyperlink</a>
Gene Summary	<p>Histones are basic nuclear proteins that are responsible for the nucleosome structure of the chromosomal fiber in eukaryotes. Nucleosomes consist of approximately 146 bp of DNA wrapped around a histone octamer composed of pairs of each of the four core histones (H2A, H2B, H3, and H4). The chromatin fiber is further compacted through the interaction of a linker histone, H1, with the DNA between the nucleosomes to form higher order chromatin structures. This gene is intronless and encodes a member of the histone H4 family. Transcripts from this gene lack polyA tails; instead, they contain a palindromic termination element. [provided by RefSeq]</p>
Other Designations	histone 4, H4 histone H4

## Pathway

- [Systemic lupus erythematosus](#)