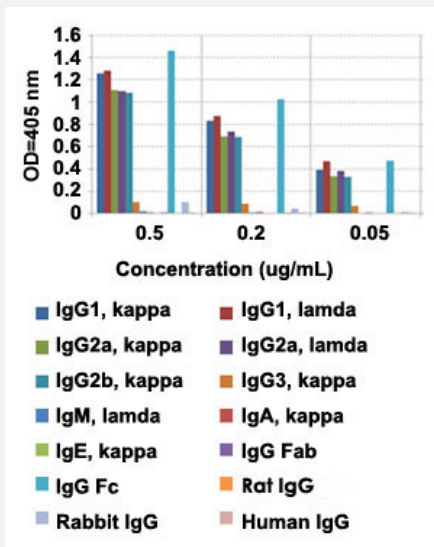


RecomAb™

## Mouse IgG Fc monoclonal antibody, clone RMG06

Catalog # MAB12776      Size 100 ug

### Applications



#### Enzyme-linked Immunoabsorbent Assay

ELISA analysis of Mouse IgG Fc monoclonal antibody, clone RMG06 (Cat # MAB12776) at the following concentrations: 0.5 ug/mL, 0.2 ug/mL, and 0.05 ug/mL. The plate was coated with 50 ng/well of different immunoglobulins and the result shows this antibody reacts to the Fc region of mouse IgG1, IgG2a, IgG2b, and very slightly to IgG3; no cross reactivity with IgM, IgA, IgE, human IgG, rat IgG, and rabbit IgG. An alkaline phosphatase conjugated anti-goat IgG as the secondary antibody.

#### Enzyme-linked Immunoabsorbent Assay

A titer ELISA of mouse IgG. The plate was coated with different amounts of mouse IgG. A serial dilution of Mouse IgG Fc monoclonal antibody, clone RMG06 (Cat# MAB12776) was used as the primary antibody. An alkaline phosphatase conjugated anti-goat IgG as the secondary antibody.

### Specification

Product Description	Goat recombinant monoclonal antibody raised against mouse IgG Fc.
Antibody Species	Goat
Immunogen	Original antibody is raised against mouse IgG.

Sequence	N/A
Reactivity	Mouse
Specificity	This antibody reacts to the Fc region of Mouse IgG, including IgG1, IgG2a, and IgG2b. It shows very s light reaction with mouse IgG3. No cross reactivity with IgM, IgA, IgE, human IgG, rat IgG, or rabbit Ig G.
Form	Liquid
Purification	Protein G purification
Isotype	IgG
Recommend Usage	ELISA (0.05 ug/mL-1 ug/mL) Flow Cytometry Immunocytochemistry Immunohistochemistry (0.5 ug/mL-2 ug/mL) Immunoprecipitation The optimal working dilution should be determined by the end user.
Storage Buffer	In PBS (50% glycerol, 1% BSA, 0.09% sodium azide)
Storage Instruction	Store at -20°C. Aliquot to avoid repeated freezing and thawing.
Note	This product contains sodium azide: a POISONOUS AND HAZARDOUS SUBSTANCE which shoul d be handled by trained staff only.

## Applications

- Immunohistochemistry (Formalin/PFA-fixed paraffin-embedded sections)
- Immunocytochemistry
- Immunoprecipitation
- Enzyme-linked Immunoabsorbent Assay

ELISA analysis of Mouse IgG Fc monoclonal antibody, clone RMG06 (Cat # MAB12776) at the following concentrations: 0.5 ug/mL, 0.2 ug/mL, and 0.05 ug/mL. The plate was coated with 50 ng/well of different immunoglobulins and the result shows this antibody reacts to the Fc region of mouse IgG1, IgG2a, IgG2b, and very slightly to IgG3; no cross reactivity with IgM, IgA, IgE, human IgG, rat IgG, and rabbit IgG. An alkaline phosphatase conjugated anti-goat IgG as the secondary antibody.

- Enzyme-linked Immunoabsorbent Assay

A titer ELISA of mouse IgG. The plate was coated with different amounts of mouse IgG. A serial dilution of Mouse IgG Fc monoclonal antibody, clone RMG06 (Cat# MAB12776) was used as the primary antibody. An alkaline phosphatase conjugated anti-goat IgG as the secondary antibody.

- Flow Cytometry