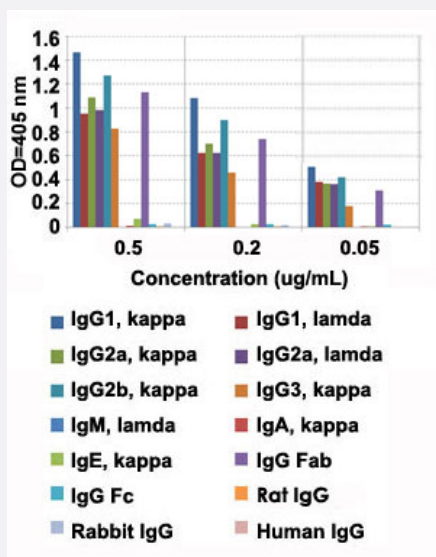


RecomAb™

Mouse IgG Fab monoclonal antibody, clone RMG05

Catalog # MAB12775 Size 100 ug

Applications



Enzyme-linked Immunoabsorbent Assay

ELISA analysis of Mouse IgG Fab monoclonal antibody, clone RMG05 (Cat # MAB12775) at the following concentrations: 0.5 ug/mL, 0.2 ug/mL, and 0.05 ug/mL. The plate was coated with 50 ng/well of different immunoglobulins and the result shows this antibody reacts to the Fab region of mouse IgG1, IgG2a, IgG2b, and IgG3; no cross reactivity with IgM, IgA, IgE, human IgG, rat IgG, and rabbit IgG. An alkaline phosphatase conjugated anti-goat IgG as the secondary antibody.

Enzyme-linked Immunoabsorbent Assay

A titer ELISA of mouse IgG. The plate was coated with different amounts of mouse IgG. A serial dilution of Mouse IgG Fab monoclonal antibody, clone RMG05 (Cat# MAB12775) was used as the primary antibody. An alkaline phosphatase conjugated anti-goat IgG as the secondary antibody.

Specification

Product Description	Goat recombinant monoclonal antibody raised against mouse IgG Fab.
Antibody Species	Goat
Immunogen	Original antibody is raised against mouse IgG.

Sequence	N/A
Reactivity	Mouse
Specificity	This antibody reacts to the Fab region of Mouse IgG, including IgG1, IgG2a, IgG2b, and IgG3. No cross reactivity with IgM, IgA, IgE, human IgG, rat IgG, or rabbit IgG.
Form	Liquid
Purification	Protein G purification
Isotype	IgG
Recommend Usage	ELISA (0.05 ug/mL-1 ug/mL) Flow Cytometry Immunocytochemistry Immunohistochemistry (0.5 ug/mL-2 ug/mL) Immunoprecipitation The optimal working dilution should be determined by the end user.
Storage Buffer	In PBS (50% glycerol, 1% BSA, 0.09% sodium azide)
Storage Instruction	Store at -20°C. Aliquot to avoid repeated freezing and thawing.
Note	This product contains sodium azide: a POISONOUS AND HAZARDOUS SUBSTANCE which should be handled by trained staff only.

Applications

- Immunohistochemistry (Formalin/PFA-fixed paraffin-embedded sections)
- Immunocytochemistry
- Immunoprecipitation

- Enzyme-linked Immunoabsorbent Assay

ELISA analysis of Mouse IgG Fab monoclonal antibody, clone RMG05 (Cat # MAB12775) at the following concentrations: 0.5 ug/mL, 0.2 ug/mL, and 0.05 ug/mL. The plate was coated with 50 ng/well of different immunoglobulins and the result shows this antibody reacts to the Fab region of mouse IgG1, IgG2a, IgG2b, and IgG3; no cross reactivity with IgM, IgA, IgE, human IgG, rat IgG, and rabbit IgG. An alkaline phosphatase conjugated anti-goat IgG as the secondary antibody.

- Enzyme-linked Immunoabsorbent Assay

A titer ELISA of mouse IgG. The plate was coated with different amounts of mouse IgG. A serial dilution of Mouse IgG Fab monoclonal antibody, clone RMG05 (Cat# MAB12775) was used as the primary antibody. An alkaline phosphatase conjugated anti-goat IgG as the secondary antibody.

- Flow Cytometry