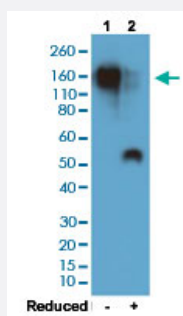


RecomAb™

# Mouse IgG1 monoclonal antibody, clone RM106

Catalog # MAB12766      Size 100 ug

## Applications



### Western Blot

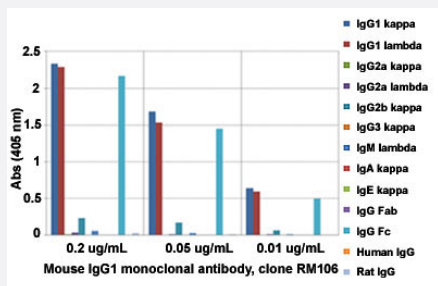
Western blot analysis of Lane 1: nonreduced (-) and Lane 2: reduced (+) mouse IgG1 (20 ng/lane) with Mouse IgG1 monoclonal antibody, clone RM106 (Cat # MAB12766) under 0.2 ug/mL working concentration. This antibody reacts to nonreduced mouse IgG1 (~150 kDa) stronger than the reduced gamma 1 form (~50 kDa).

### Enzyme-linked Immunoabsorbent Assay

A titer ELISA of mouse IgG1. The plate was coated with different amount of mouse IgG1. A serial dilution of Mouse IgG1 monoclonal antibody, clone RM106 (Cat# MAB12766) was used as the primary antibody. An alkaline phosphatase conjugated anti-rabbit IgG as the secondary antibody.

### Enzyme-linked Immunoabsorbent Assay

ELISA analysis of Mouse IgG1 monoclonal antibody, clone RM106 (Cat # MAB12766) at the following concentrations: 0.2 ug/mL, 0.05 ug/mL, and 0.01 ug/mL. The plate was coated with 50 ng/well of different immunoglobulins and the result shows this antibody reacts to the Fc region of mouse IgG1; slightly cross reacts to IgG2b; no cross reactivity with IgG2a, IgG3, IgM, IgA, IgE, human IgG, or rat IgG. An alkaline phosphatase conjugated anti-rabbit IgG as the secondary antibody.



## Specification

### Product Description

Rabbit recombinant monoclonal antibody raised against mouse IgG1.

|                     |   |
|---------------------|---|
| Antibody Species    | Rabbit  |
| Immunogen           | Original antibody is raised against mouse IgG.  |
| Sequence            | N/A   |
| Reactivity          | Mouse   |
| Specificity         | This antibody reacts to the Fc region of mouse IgG1. No cross reactivity with mouse IgG2a, IgG3, IgM, IgA, IgE, human IgG, or rat IgG. It may slightly cross react to mouse IgG2b, and may also react to goat IgG.  |
| Form                | Liquid  |
| Purification        | Protein A affinity purification   |
| Isotype             | IgG   |
| Recommend Usage     | ELISA (0.005 - 0.2 ug/mL)<br>Flow Cytometry<br>Immunocytochemistry (0.5 - 2 ug/mL)<br>Immunohistochemistry (0.5 - 2 ug/mL)<br>Immunoprecipitation<br>Western Blot (0.1 - 0.5 ug/mL)<br>The optimal working dilution should be determined by the end user. |
| Storage Buffer      | In PBS (50% glycerol, 1% BSA, 0.09% sodium azide)   |
| Storage Instruction | Store at -20°C.<br>Aliquot to avoid repeated freezing and thawing.  |
| Note                | This product contains sodium azide: a POISONOUS AND HAZARDOUS SUBSTANCE which should be handled by trained staff only.  |

## Applications

- Western Blot

Western blot analysis of Lane 1: nonreduced (-) and Lane 2: reduced (+) mouse IgG1 (20 ng/lane) with Mouse IgG1 monoclonal antibody, clone RM106 (Cat # MAB12766) under 0.2 ug/mL working concentration. This antibody reacts to nonreduced mouse IgG1 (~150 kDa) stronger than the reduced gamma 1 form (~50 kDa).

- Immunohistochemistry

- Immunocytochemistry

- Immunoprecipitation

- Enzyme-linked Immunoabsorbent Assay

A titer ELISA of mouse IgG1. The plate was coated with different amount of mouse IgG1. A serial dilution of Mouse IgG1 monoclonal antibody, clone RM106 (Cat# MAB12766) was used as the primary antibody. An alkaline phosphatase conjugated anti-rabbit IgG as the secondary antibody.

- Enzyme-linked Immunoabsorbent Assay

ELISA analysis of Mouse IgG1 monoclonal antibody, clone RM106 (Cat # MAB12766) at the following concentrations: 0.2 ug/mL, 0.05 ug/mL, and 0.01 ug/mL. The plate was coated with 50 ng/well of different immunoglobulins and the result shows this antibody reacts to the Fc region of mouse IgG1; slightly cross reacts to IgG2b; no cross reactivity with IgG2a, IgG3, IgM, IgA, IgE, human IgG, or rat IgG. An alkaline phosphatase conjugated anti-rabbit IgG as the secondary antibody.

- Flow Cytometry

## Gene Info — Ighg1

|               |                       |
|---------------|-----------------------|
| Entrez GeneID | <a href="#">16017</a> |
|---------------|-----------------------|

|                    |                        |
|--------------------|------------------------|
| Protein Accession# | <a href="#">P01868</a> |
|--------------------|------------------------|

|           |       |
|-----------|-------|
| Gene Name | Ighg1 |
|-----------|-------|

|            |                     |
|------------|---------------------|
| Gene Alias | IgG1, Igh-4, VH7183 |
|------------|---------------------|

|                  |  |
|------------------|--|
| Gene Description | immunoglobulin heavy constant gamma 1 (G1m marker) |
|------------------|--|

|               |                           |
|---------------|---------------------------|
| Gene Ontology | <a href="#">Hyperlink</a> |
|---------------|---------------------------|

|                    |   |
|--------------------|---|
| Other Designations | - |
|--------------------|---|