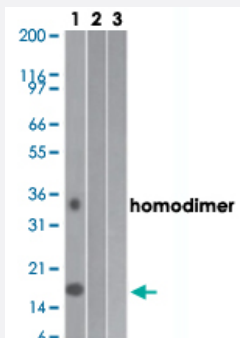


IL17A monoclonal antibody, clone 4K5F6

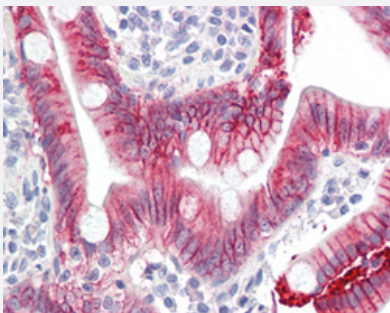
Catalog # MAB12727 Size 50 ug

Applications



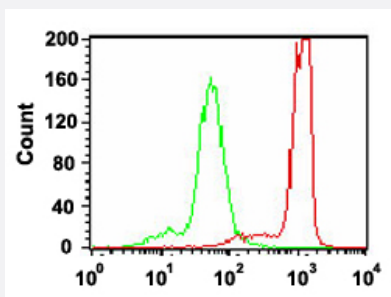
Western Blot (Recombinant protein)

Western blot analysis of Lane 1: human, Lane 2: mouse and Lane 3: rat full-length IL17A recombinant protein with IL17A monoclonal antibody, clone 4K5F6 (Cat # MAB12727) at 0.2 ug/mL working concentration.



Immunohistochemistry (Formalin/PFA-fixed paraffin-embedded sections)

Immunohistochemical staining (Formalin-fixed paraffin-embedded sections) of human small intestine with IL17A monoclonal antibody, clone 4K5F6 (Cat # MAB12727) at 5-10 ug/mL working concentration.



Flow Cytometry

Flow cytometric analysis of human lymphocytes with IL17A monoclonal antibody, clone 4K5F6 (Cat # MAB12727) (red histogram) and an isotype control (green histogram) followed by FITC-conjugated goat anti-mouse IgG as the secondary antibody.

Specification

Product Description

Mouse monoclonal antibody raised against human IL17A.

Immunogen

A peptide corresponding to amino acids 1-75 of human IL17A.

Host	Mouse
Reactivity	Human
Form	Liquid
Purification	Protein G purification
Isotype	IgG2b, kappa
Recommend Usage	Flow Cytometry Immunohistochemistry (Formalin/PFA-fixed paraffin-embedded sections) (5-10 ug/mL) Western Blot (0.2-2 ug/mL) The optimal working dilution should be determined by the end user.
Storage Buffer	In PBS (0.05% BSA, 0.05% sodium azide).
Storage Instruction	Store at 4°C. For long term storage store at -20°C. Aliquot to avoid repeated freezing and thawing.
Note	This product contains sodium azide: a POISONOUS AND HAZARDOUS SUBSTANCE which should be handled by trained staff only.

Applications

- Western Blot (Recombinant protein)

Western blot analysis of Lane 1: human, Lane 2: mouse and Lane 3: rat full-length IL17A recombinant protein with IL17A monoclonal antibody, clone 4K5F6 (Cat # MAB12727) at 0.2 ug/mL working concentration.

- Immunohistochemistry (Formalin/PFA-fixed paraffin-embedded sections)

Immunohistochemical staining (Formalin-fixed paraffin-embedded sections) of human small intestine with IL17A monoclonal antibody, clone 4K5F6 (Cat # MAB12727) at 5-10 ug/mL working concentration.

- Flow Cytometry

Flow cytometric analysis of human lymphocytes with IL17A monoclonal antibody, clone 4K5F6 (Cat # MAB12727) (red histogram) and an isotype control (green histogram) followed by FITC-conjugated goat anti-mouse IgG as the secondary antibody.

Gene Info — IL17A

Entrez GeneID	3605
Gene Name	IL17A
Gene Alias	CTLA8, IL-17, IL-17A, IL17

Gene Description	interleukin 17A
Omim ID	603149
Gene Ontology	Hyperlink
Gene Summary	The protein encoded by this gene is a proinflammatory cytokine produced by activated T cells. This cytokine regulates the activities of NF-kappaB and mitogen-activated protein kinases. This cytokine can stimulate the expression of IL6 and cyclooxygenase-2 (PTGS2/COX-2), as well as enhance the production of nitric oxide (NO). High levels of this cytokine are associated with several chronic inflammatory diseases including rheumatoid arthritis, psoriasis and multiple sclerosis. [provided by RefSeq]
Other Designations	OTTHUMP00000016597 cytotoxic T-lymphocyte-associated antigen 8 cytotoxic T-lymphocyte-associated protein 8 cytotoxic T-lymphocyte-associated serine esterase 8 interleukin 17 (cytotoxic T-lymphocyte-associated serine esterase 8)

Pathway

- [Cytokine-cytokine receptor interaction](#)

Disease

- [Arthritis](#)
- [Asthma](#)
- [Breast Neoplasms](#)
- [Bronchiolitis](#)
- [Colitis](#)
- [Disease Progression](#)
- [Dyspepsia](#)
- [Genetic Predisposition to Disease](#)
- [Helicobacter Infections](#)
- [Infant](#)
- [Inflammation](#)
- [Multiple Sclerosis](#)

- [Respiratory Syncytial Virus Infections](#)
- [Stomach Neoplasms](#)
- [Tobacco Use Disorder](#)