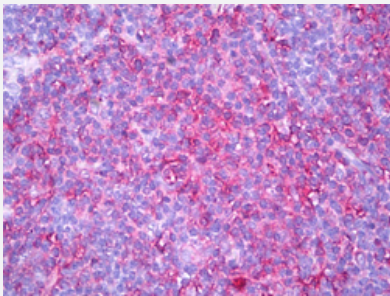


HLA-DR monoclonal antibody, clone YE2/36 HLK

Catalog # MAB12686

Size 125 ug

Applications



Immunohistochemistry (Formalin/PFA-fixed paraffin-embedded sections)

Immunohistochemical staining (Formalin-fixed paraffin-embedded sections) of human thymus, medulla with HLA-DR monoclonal antibody, clone YE2/36 HLK (Cat # MAB12686) at 10 ug/mL working concentration.

Specification

Product Description	Rat monoclonal antibody raised against human HLA-DR.
Immunogen	eHR-B Ramos cells
Host	Rat
Reactivity	Human
Form	Liquid
Purification	Affinity purification
Isotype	IgG2a
Recommend Usage	Flow Cytometry (1:50-1:100) Immunohistochemistry (Frozen sections) Immunohistochemistry (Formalin/PFA-fixed paraffin-embedded sections) (10 ug/mL) The optimal working dilution should be determined by the end user.
Storage Buffer	In PBS (0.09% sodium azide).
Storage Instruction	Store at 4°C. For long term storage store at -20°C. Aliquot to avoid repeated freezing and thawing.

Note

This product contains sodium azide: a POISONOUS AND HAZARDOUS SUBSTANCE which should be handled by trained staff only.

Applications

- Immunohistochemistry (Formalin/PFA-fixed paraffin-embedded sections)

Immunohistochemical staining (Formalin-fixed paraffin-embedded sections) of human thymus, medulla with HLA-DR monoclonal antibody, clone YE2/36 HLK (Cat # MAB12686) at 10 ug/mL working concentration.

- Immunohistochemistry (Frozen sections)
- Flow Cytometry