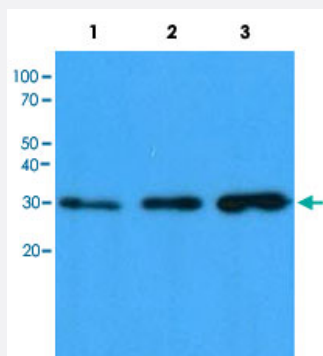


CBR1 monoclonal antibody, clone AT4E12

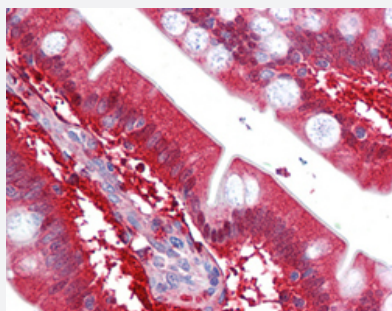
Catalog # MAB12653 Size 50 uL

Applications



Western Blot (Cell lysate)

Western blot analysis of Lane 1: HeLa cell lysate, Lane 2: HepG2 cell lysate and Lane 3: 293T cell lysate with CBR1 monoclonal antibody, clone AT4E12 (Cat # MAB12653) at 1:1000 dilution followed by HRP-conjugated goat anti-mouse secondary antibody and visualized by ECL detection system.



Immunohistochemistry (Formalin/PFA-fixed paraffin-embedded sections)

Immunohistochemical staining (Formalin-fixed paraffin-embedded sections) of human small intestine with CBR1 monoclonal antibody, clone AT4E12 (Cat # MAB12653) at 10 ug/mL working concentration.

Specification

Product Description	Mouse monoclonal antibody raised against human CBR1.
Immunogen	Recombinant protein corresponding to human CBR1.
Host	Mouse
Reactivity	Human
Form	Liquid
Purification	Protein G purification

Isotype	IgG2a, kappa
Recommend Usage	ELISA Immunohistochemistry (Formalin/PFA-fixed paraffin-embedded sections) (10 ug/mL) Western Blot (1:500-1:1000) The optimal working dilution should be determined by the end user.
Storage Buffer	In PBS, pH 7.4 (0.09% sodium azide).
Storage Instruction	Store at 4°C. For long term storage store at -20°C. Aliquot to avoid repeated freezing and thawing.
Note	This product contains sodium azide: a POISONOUS AND HAZARDOUS SUBSTANCE which should be handled by trained staff only.

Applications

- Western Blot (Cell lysate)

Western blot analysis of Lane 1: HeLa cell lysate, Lane 2: HepG2 cell lysate and Lane 3: 293T cell lysate with CBR1 monoclonal antibody, clone AT4E12 (Cat # MAB12653) at 1:1000 dilution followed by HRP-conjugated goat anti-mouse secondary antibody and visualized by ECL detection system.

- Immunohistochemistry (Formalin/PFA-fixed paraffin-embedded sections)

Immunohistochemical staining (Formalin-fixed paraffin-embedded sections) of human small intestine with CBR1 monoclonal antibody, clone AT4E12 (Cat # MAB12653) at 10 ug/mL working concentration.

- Enzyme-linked Immunoabsorbent Assay

Gene Info — CBR1

Entrez GeneID	873
Gene Name	CBR1
Gene Alias	CBR, SDR21C1, hCBR1
Gene Description	carbonyl reductase 1
Omim ID	114830
Gene Ontology	Hyperlink

Gene Summary

Carbonyl reductase is one of several monomeric, NADPH-dependent oxidoreductases having wide specificity for carbonyl compounds. This enzyme is widely distributed in human tissues. Another carbonyl reductase gene, CRB3, lies close to this gene on chromosome 21q. [provided by RefSeq]

Other Designations

carbonyl reductase (NADPH) 1|prostaglandin 9-ketoreductase|prostaglandin-E(2) 9-reductase|short chain dehydrogenase/reductase family 21C, member 1

Pathway

- [Arachidonic acid metabolism](#)
- [Metabolic pathways](#)

Disease

- [Breast cancer](#)
- [Breast Neoplasms](#)
- [Genetic Predisposition to Disease](#)
- [Lung Neoplasms](#)
- [Pulmonary Disease](#)
- [Urinary Bladder Neoplasms](#)
- [Werner syndrome](#)