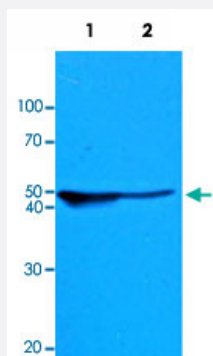


KRT18 monoclonal antibody, clone AT2G3

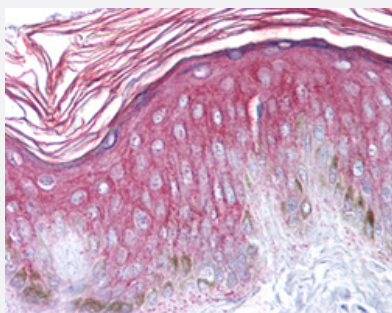
Catalog # MAB12652 Size 50 uL

Applications



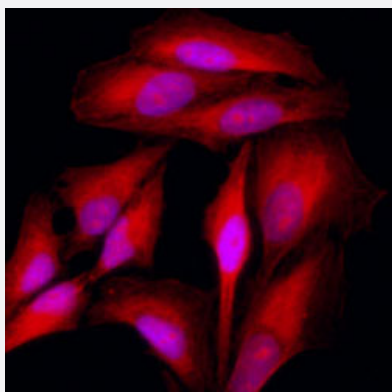
Western Blot (Cell lysate)

Western blot analysis of Lane 1: HeLa cell lysate and Lane 2: AGS cell lysate with KRT18 monoclonal antibody, clone AT2G3 (Cat # MAB12652) at 1:1000 dilution followed by HRP-conjugated goat anti-mouse secondary antibody and visualized by ECL detection system.



Immunohistochemistry (Formalin/PFA-fixed paraffin-embedded sections)

Immunohistochemical staining (Formalin-fixed paraffin-embedded sections) of human skin with KRT18 monoclonal antibody, clone AT2G3 (Cat # MAB12652) at 10 ug/mL working concentration.



Immunofluorescence

Immunofluorescent staining of HeLa cells with KRT18 monoclonal antibody, clone AT2G3 (Cat # MAB12652) at 1:500 dilution.

Specification

Product Description

Mouse monoclonal antibody raised against human KRT18.

Immunogen	Recombinant protein corresponding to amino acids 79-430 of human KRT18.
Host	Mouse
Reactivity	Human
Form	Liquid
Purification	Protein G purification
Isotype	IgG2b, kappa
Recommend Usage	ELISA Immunofluorescence (1:500) Immunohistochemistry (Formalin/PFA-fixed paraffin-embedded sections) (10 ug/mL) Western Blot (1:1000) The optimal working dilution should be determined by the end user.
Storage Buffer	In PBS, pH 7.4 (0.09% sodium azide).
Storage Instruction	Store at 4°C. For long term storage store at -20°C. Aliquot to avoid repeated freezing and thawing.
Note	This product contains sodium azide: a POISONOUS AND HAZARDOUS SUBSTANCE which should be handled by trained staff only.

Applications

- Western Blot (Cell lysate)

Western blot analysis of Lane 1: HeLa cell lysate and Lane 2: AGS cell lysate with KRT18 monoclonal antibody, clone AT2G3 (Cat # MAB12652) at 1:1000 dilution followed by HRP-conjugated goat anti-mouse secondary antibody and visualized by ECL detection system.

- Immunohistochemistry (Formalin/PFA-fixed paraffin-embedded sections)

Immunohistochemical staining (Formalin-fixed paraffin-embedded sections) of human skin with KRT18 monoclonal antibody, clone AT2G3 (Cat # MAB12652) at 10 ug/mL working concentration.

- Immunofluorescence

Immunofluorescent staining of HeLa cells with KRT18 monoclonal antibody, clone AT2G3 (Cat # MAB12652) at 1:500 dilution.

- Enzyme-linked Immunoabsorbent Assay

Gene Info — KRT18

Entrez GeneID	3875
Gene Name	KRT18
Gene Alias	CYK18, K18
Gene Description	keratin 18
Omim ID	148070 215600
Gene Ontology	Hyperlink
Gene Summary	<p>KRT18 encodes the type I intermediate filament chain keratin 18. Keratin 18, together with its filament partner keratin 8, are perhaps the most commonly found members of the intermediate filament gene family. They are expressed in single layer epithelial tissues of the body. Mutations in this gene have been linked to cryptogenic cirrhosis. Two transcript variants encoding the same protein have been found for this gene. [provided by RefSeq]</p>
Other Designations	cell proliferation-inducing protein 46 cytokeratin 18

Pathway

- [Pathogenic Escherichia coli infection - EHEC](#)

Disease

- [Cleft Lip](#)
- [Cleft Palate](#)
- [Drug-Induced Liver Injury](#)
- [Genetic Predisposition to Disease](#)
- [Liver Cirrhosis](#)
- [Liver Failure](#)