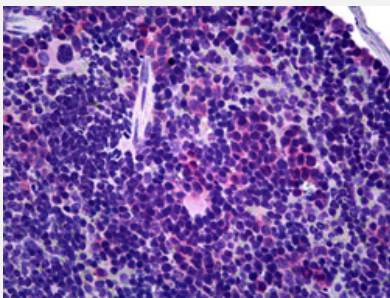


Tcrg/Tcrd monoclonal antibody, clone GL-3 (FITC)

Catalog # MAB12644 Size 100 ug

Applications



Immunohistochemistry (Formalin/PFA-fixed paraffin-embedded sections)

Immunohistochemical staining (Formalin-fixed paraffin-embedded sections) of mouse spleen with TCR Gamma/TCR Delta monoclonal antibody, clone GL-3 (FITC) (Cat # MAB12644) at 1:50 dilution.

Specification

Product Description	Hamster monoclonal antibody raised against mouse Tcrg/Tcrd.
Immunogen	C57BL/6 intraepithelial lymphocytes.
Host	Hamster
Reactivity	Mouse
Specificity	This antibody reacts with the surface on all gamma delta TCR bearing cells and does not react with receptors on alpha beta TCR positive cells.
Form	Liquid
Conjugation	FITC
Purification	Protein G purification
Isotype	IgG
Recommend Usage	Flow Cytometry (1 ug/10 ⁶ cells) Immunohistochemistry (Frozen sections) Immunohistochemistry (Formalin/PFA-fixed paraffin-embedded sections) (1:50) The optimal working dilution should be determined by the end user.

Storage Buffer	In PBS (BSA, 0.02% sodium azide).
Storage Instruction	Store at 4°C. For long term storage store at -20°C. Aliquot to avoid repeated freezing and thawing.
Note	This product contains sodium azide: a POISONOUS AND HAZARDOUS SUBSTANCE which should be handled by trained staff only.

Applications

- Immunohistochemistry (Formalin/PFA-fixed paraffin-embedded sections)

Immunohistochemical staining (Formalin-fixed paraffin-embedded sections) of mouse spleen with TCR Gamma/TCR Delta monoclonal antibody, clone GL-3 (FITC) (Cat # MAB12644) at 1:50 dilution.

- Immunohistochemistry (Frozen sections)

- Flow Cytometry

Gene Info — Tcrd

Entrez GeneID	110066
Gene Name	Tcrd
Gene Alias	Tcrdelta
Gene Description	T-cell receptor delta chain
Gene Ontology	Hyperlink
Other Designations	Tcr delta

Gene Info — Tcrg

Entrez GeneID	110067
Gene Name	Tcrg
Gene Alias	TCRGV1S1, TCRGV2S1, TCRGV3S1, TCRGV5S3
Gene Description	T-cell receptor gamma chain

Gene Ontology

[Hyperlink](#)**Other Designations**

TCR V gamma 1.3|TCR V gamma 2|TCR V gamma 3|TCR V gamma 4