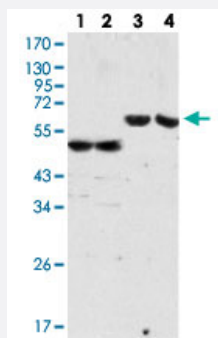


# ALB monoclonal antibody, clone 8F6F9

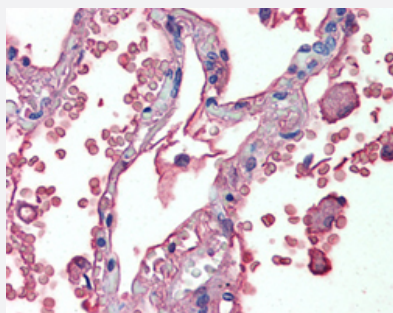
Catalog # MAB12612      Size 50 uL

## Applications



### Western Blot

Western blot analysis of Lane 1,3: human serum, Lane 2, 4: plasma, Lane 1, 2: human IgG mouse monoclonal antibody and Lane 3, 4: ALB monoclonal antibody, clone 8F6F9 (Cat # MAB12612).



### Immunohistochemistry (Formalin/PFA-fixed paraffin-embedded sections)

Immunohistochemical staining (Formalin-fixed paraffin-embedded sections) of human lung with ALB monoclonal antibody, clone 8F6F9 (Cat # MAB12612) at 1:200 dilution.

## Specification

<b>Product Description</b>	Mouse monoclonal antibody raised against human ALB.
<b>Immunogen</b>	Human ALB
<b>Host</b>	Mouse
<b>Reactivity</b>	Human
<b>Form</b>	Liquid
<b>Isotype</b>	IgG1

<b>Recommend Usage</b>	ELISA (1:10000) Immunohistochemistry (Formalin/PFA-fixed paraffin-embedded sections) (1:200) Western Blot (1:500-1:2000) The optimal working dilution should be determined by the end user.
<b>Storage Buffer</b>	In ascites (0.03% sodium azide).
<b>Storage Instruction</b>	Store at 4°C. For long term storage store at -20°C. Aliquot to avoid repeated freezing and thawing.
<b>Note</b>	This product contains sodium azide: a POISONOUS AND HAZARDOUS SUBSTANCE which should be handled by trained staff only.

## Applications

- Western Blot

Western blot analysis of Lane 1,3: human serum, Lane 2, 4: plasma, Lane 1, 2: human IgG mouse monoclonal antibody and Lane 3, 4: ALB monoclonal antibody, clone 8F6F9 (Cat # MAB12612).

- Immunohistochemistry (Formalin/PFA-fixed paraffin-embedded sections)

Immunohistochemical staining (Formalin-fixed paraffin-embedded sections) of human lung with ALB monoclonal antibody, clone 8F6F9 (Cat # MAB12612) at 1:200 dilution.

- Enzyme-linked Immunoabsorbent Assay

## Gene Info — ALB

<b>Entrez GeneID</b>	<a href="#">213</a>
<b>Gene Name</b>	ALB
<b>Gene Alias</b>	DKFZp779N1935, PRO0883, PRO0903, PRO1341
<b>Gene Description</b>	albumin
<b>Omim ID</b>	<a href="#">103600</a> <a href="#">194470</a>
<b>Gene Ontology</b>	<a href="#">Hyperlink</a>

**Gene Summary**

Albumin is a soluble, monomeric protein which comprises about one-half of the blood serum protein. Albumin functions primarily as a carrier protein for steroids, fatty acids, and thyroid hormones and plays a role in stabilizing extracellular fluid volume. Albumin is a globular unglycosylated serum protein of molecular weight 65,000. Albumin is synthesized in the liver as preproalbumin which has an N-terminal peptide that is removed before the nascent protein is released from the rough endoplasmic reticulum. The product, proalbumin, is in turn cleaved in the Golgi vesicles to produce the secreted albumin. [provided by RefSeq]

**Other Designations**

cell growth inhibiting protein 42|growth-inhibiting protein 20|serum albumin

**Disease**

- [Alzheimer disease](#)
- [Diabetes Mellitus](#)
- [Hepatitis](#)