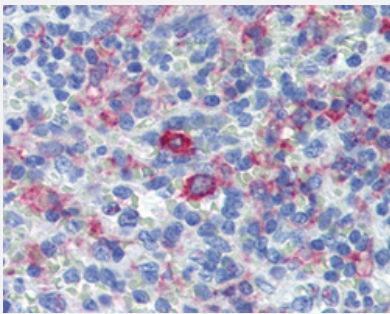


CD163 monoclonal antibody, clone GHI/61

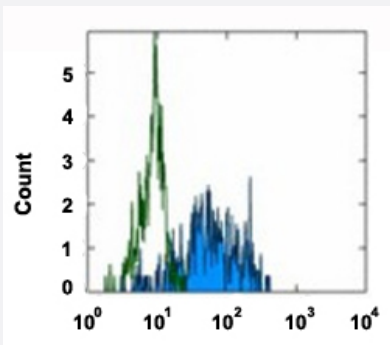
Catalog # MAB12601 Size 100 ug

Applications



Immunohistochemistry (Formalin/PFA-fixed paraffin-embedded sections)

Immunohistochemical staining (Formalin-fixed paraffin-embedded sections) of human spleen with CD163 monoclonal antibody, clone GHI/61 (Cat # MAB12601) at 20 ug/mL working concentration.



Flow Cytometry

Flow cytometric analysis of human peripheral blood cells with CD163 monoclonal antibody, clone GHI/61 (Cat # MAB12601) (colored histogram) and an isotype control mouse IgG1, kappa (open histogram) followed by FITC-conjugated anti-mouse IgG as the secondary antibody.

Specification

Product Description	Mouse monoclonal antibody raised against human CD163.
Immunogen	Spleen cells from a case of hairy cell leukemia.
Host	Mouse
Reactivity	Human
Form	Liquid
Purification	Affinity purification
Isotype	IgG1, kappa

Recommend Usage	Flow Cytometry Immunohistochemistry (Formalin/PFA-fixed paraffin-embedded sections) (20 ug/mL) Western Blot The optimal working dilution should be determined by the end user.
Storage Buffer	In aqueous buffer (Stabilizer, 0.09% sodium azide).
Storage Instruction	Store at 4°C. Aliquot to avoid repeated freezing and thawing.
Note	This product contains sodium azide: a POISONOUS AND HAZARDOUS SUBSTANCE which should be handled by trained staff only.

Applications

- Western Blot
- Immunohistochemistry (Formalin/PFA-fixed paraffin-embedded sections)
Immunohistochemical staining (Formalin-fixed paraffin-embedded sections) of human spleen with CD163 monoclonal antibody, clone GH161 (Cat # MAB12601) at 20 ug/mL working concentration.
- Flow Cytometry
Flow cytometric analysis of human peripheral blood cells with CD163 monoclonal antibody, clone GH161 (Cat # MAB12601) (colored histogram) and an isotype control mouse IgG1, kappa (open histogram) followed by FITC-conjugated anti-mouse IgG as the secondary antibody.

Gene Info — CD163

Entrez GeneID	9332
Gene Name	CD163
Gene Alias	M130, MM130
Gene Description	CD163 molecule
Omim ID	605545
Gene Ontology	Hyperlink
Other Designations	CD163 antigen macrophage-associated antigen

Disease

- [Kidney Failure](#)
- [Tobacco Use Disorder](#)