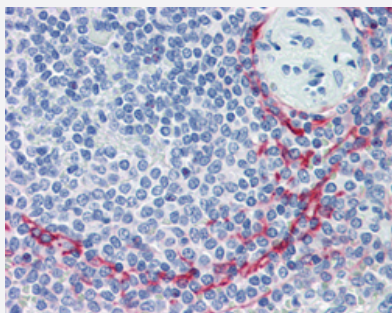


MADCAM1 monoclonal antibody, clone 314G8

Catalog # MAB12575 Size 100 ug

Applications



Immunohistochemistry (Formalin/PFA-fixed paraffin-embedded sections)

Immunohistochemical staining (Formalin-fixed paraffin-embedded sections) of human spleen with MADCAM1 monoclonal antibody, clone 314G8 (Cat # MAB12575) at 10 ug/mL working concentration.

Specification

Product Description	Mouse monoclonal antibody raised against human MADCAM1.
Immunogen	Recombinant protein corresponding to human MADCAM1.
Host	Mouse
Reactivity	Human
Form	Liquid
Purification	Protein G purification
Isotype	IgG1
Recommend Usage	ELISA Flow Cytometry (1:10-1:100) Immunohistochemistry (Formalin/PFA-fixed paraffin-embedded sections) (10 ug/mL) Western Blot The optimal working dilution should be determined by the end user.
Storage Buffer	In PBS, pH 7.4.

Storage Instruction

Store at -20°C.
Aliquot to avoid repeated freezing and thawing.

Applications

- Western Blot
- Immunohistochemistry (Formalin/PFA-fixed paraffin-embedded sections)
Immunohistochemical staining (Formalin-fixed paraffin-embedded sections) of human spleen with MADCAM1 monoclonal antibody, clone 314G8 (Cat # MAB12575) at 10 ug/mL working concentration.
- Enzyme-linked Immunoabsorbent Assay
- Flow Cytometry

Gene Info — MADCAM1

Entrez GeneID [8174](#)

Gene Name MADCAM1

Gene Alias MACAM1

Gene Description mucosal vascular addressin cell adhesion molecule 1

Omim ID [102670](#)

Gene Ontology [Hyperlink](#)

Gene Summary The protein encoded by this gene is an endothelial cell adhesion molecule that interacts preferentially with the leukocyte beta7 integrin LPAM-1 (alpha4beta7), L-selectin, and VLA-4 (alpha4beta1) on myeloid cells to direct leukocytes into mucosal and inflamed tissues. It is a member of the immunoglobulin family and is similar to ICAM1 and VCAM1. At least seven alternatively spliced transcripts encoding different protein isoforms have been found for this gene, but the full-length nature of some variants has not been determined. [provided by RefSeq]

Other Designations mucosal addressin cell adhesion molecule-1

Pathway

- [Cell adhesion molecules \(CAMs\)](#)

Disease

- [Cholangitis](#)
- [Genetic Predisposition to Disease](#)
- [Graft vs Host Disease](#)
- [Inflammatory Bowel Diseases](#)