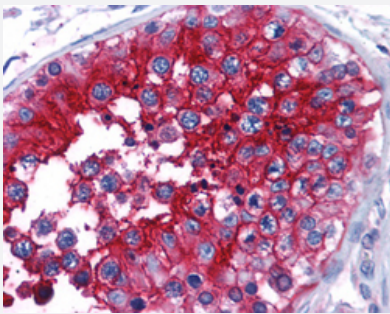


BSG monoclonal antibody, clone HIM6

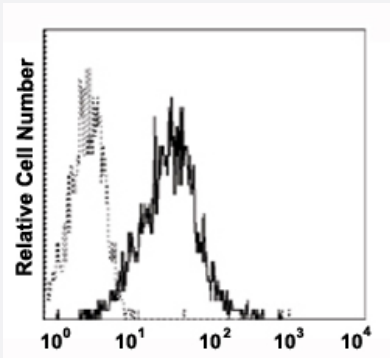
Catalog # MAB12533 Size 50 ug

Applications



Immunohistochemistry (Formalin/PFA-fixed paraffin-embedded sections)

Immunohistochemical staining (Formalin-fixed paraffin-embedded sections) of human testis with BSG monoclonal antibody, clone HIM6 (Cat # MAB12533) at 10 ug/mL working concentration.



Flow Cytometry

Flow cytometric analysis of human peripheral blood lymphocytes with BSG monoclonal antibody, clone HIM6 (Cat # MAB12533) followed by FITC-conjugated anti-mouse IgG as the secondary antibody.

Specification

Product Description	Mouse monoclonal antibody raised against human BSG.
Immunogen	Human BSG
Host	Mouse
Reactivity	Human
Form	Liquid
Purification	Affinity purification

Isotype	IgG1
Recommend Usage	Flow Cytometry (0.5 ug/10 ⁶ cells) Immunohistochemistry (Frozen sections) Immunohistochemistry (Formalin/PFA-fixed paraffin-embedded sections) (10 ug/mL) Western Blot The optimal working dilution should be determined by the end user.
Storage Buffer	In PBS, pH 7.2 (0.09% sodium azide).
Storage Instruction	Store at 4°C. Do not freeze.
Note	This product contains sodium azide: a POISONOUS AND HAZARDOUS SUBSTANCE which should be handled by trained staff only.

Applications

- Western Blot
- Immunohistochemistry (Formalin/PFA-fixed paraffin-embedded sections)
Immunohistochemical staining (Formalin-fixed paraffin-embedded sections) of human testis with BSG monoclonal antibody, clone HIM6 (Cat # MAB12533) at 10 ug/mL working concentration.
- Immunohistochemistry (Frozen sections)
- Flow Cytometry
Flow cytometric analysis of human peripheral blood lymphocytes with BSG monoclonal antibody, clone HIM6 (Cat # MAB12533) followed by FITC-conjugated anti-mouse IgG as the secondary antibody.

Gene Info — BSG

Entrez GeneID	682
Gene Name	BSG
Gene Alias	5F7, CD147, EMMPRIN, M6, OK, TCSF
Gene Description	basigin (Ok blood group)
Omim ID	109480 111380
Gene Ontology	Hyperlink

Gene Summary

The protein encoded by this gene is a plasma membrane protein that is important in spermatogenesis, embryo implantation, neural network formation, and tumor progression. The encoded protein is also a member of the immunoglobulin superfamily. Multiple transcript variants encoding different isoforms have been found for this gene. [provided by RefSeq]

Other Designations

CD147 antigen|M6 leukocyte activation antigen|OK blood group antigen|basigin|collagenase stimulatory factor|extracellular matrix metalloproteinase inducer

Disease

- [Cardiovascular Diseases](#)
- [Diabetes Mellitus](#)
- [Edema](#)