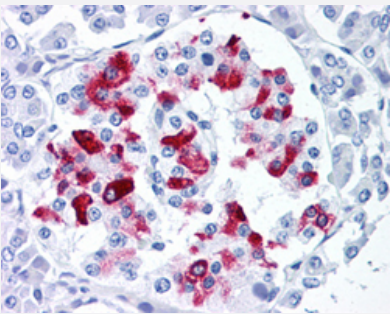


IAPP monoclonal antibody, clone R10/99

Catalog # MAB12508 Size 50 uL

Applications



Immunohistochemistry (Formalin/PFA-fixed paraffin-embedded sections)

Immunohistochemical staining (Formalin-fixed paraffin-embedded sections) of human pancreas, islet of Langerhans with IAPP monoclonal antibody, clone R10/99 (Cat # MAB12508).

Specification

Product Description	Mouse monoclonal antibody raised against human IAPP.
Immunogen	A synthetic peptide corresponding to human IAPP.
Sequence	ATQRLANFLV
Host	Mouse
Reactivity	Human
Form	Liquid
Isotype	IgG1
Recommend Usage	Immunofluorescence Immunohistochemistry (Frozen sections) Immunohistochemistry (Formalin/PFA-fixed paraffin-embedded sections) (1:100) The optimal working dilution should be determined by the end user.
Storage Buffer	In tissue culture supernatant (0.09% sodium azide).
Storage Instruction	Store at 4°C. For long term storage store at -20°C. Aliquot to avoid repeated freezing and thawing.

Note

This product contains sodium azide: a POISONOUS AND HAZARDOUS SUBSTANCE which should be handled by trained staff only.

Applications

- Immunohistochemistry (Formalin/PFA-fixed paraffin-embedded sections)

Immunohistochemical staining (Formalin-fixed paraffin-embedded sections) of human pancreas, islet of Langerhans with IAPP monoclonal antibody, clone R10/99 (Cat # MAB12508).

- Immunohistochemistry (Frozen sections)
- Immunofluorescence

Gene Info — IAPP

Entrez GeneID [3375](#)

Gene Name IAPP

Gene Alias AMYLIN, DAP, IAP

Gene Description islet amyloid polypeptide

Omim ID [147940](#)

Gene Ontology [Hyperlink](#)

Gene Summary Islet, or insulinoma, amyloid polypeptide is commonly found in pancreatic islets of patients suffering from diabetes mellitus type II, or harboring an insulinoma. While the association of amylin with the development of type II diabetes has been known for some time, a direct causative role for amylin has been harder to establish. Studies suggest that amylin, like the related beta-amyloid (Abeta) associated with Alzheimer's disease, can induce apoptotic cell-death in particular cultured cells, an effect that may be relevant to the development of type II diabetes. [provided by RefSeq]

Other Designations Islet amyloid polypeptide (diabetes-associated peptide; amylin)

Publication Reference

- [Rational design of potent domain antibody inhibitors of amyloid fibril assembly.](#)

Ladiwala AR, Bhattacharya M, Perchiacca JM, Cao P, Raleigh DP, Abedini A, Schmidt AM, Varkey J, Langen R, Tessier PM.
PNAS 2012 Dec; 109(49):19965.

Application: AFM, WB-Re, Recombinant protein

Pathway

- [Maturity onset diabetes of the young](#)

Disease

- [Amyloidosis](#)
- [Cardiovascular Diseases](#)
- [Diabetes Mellitus](#)
- [Edema](#)
- [Genetic Predisposition to Disease](#)
- [Kidney Failure](#)
- [Pancreatic Diseases](#)