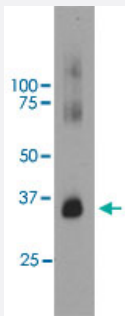


RHO monoclonal antibody, clone B630

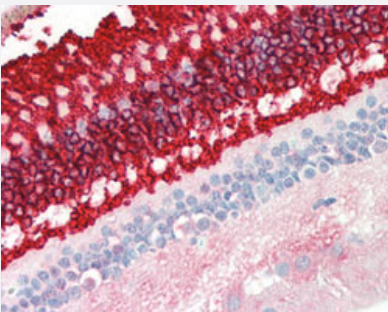
Catalog # MAB12502 Size 50 uL

Applications



Western Blot (Tissue lysate)

Western blot analysis of bovine retinal extracts using RHO monoclonal antibody, clone B630 (Cat # MAB12502) at 1:5000 dilution.



Immunohistochemistry (Formalin/PFA-fixed paraffin-embedded sections)

Immunohistochemical staining (Formalin-fixed paraffin-embedded sections) of human retina tissue with RHO monoclonal antibody, clone B630 (Cat # MAB12502) under 10 ug/mL working concentration.

Specification

Product Description	Mouse monoclonal antibody raised against native bovine RHO.
Immunogen	Native purified RHO from bovine retinal outer segments.
Host	Mouse
Reactivity	Bovine, Human
Form	Liquid
Purification	Protein G purification
Isotype	IgG1, kappa

Recommend Usage	Immunocytochemistry Immunofluorescence (1:1000) Immunohistochemistry (Formalin/PFA-fixed paraffin-embedded sections) (10 ug/mL) Western Blot (1:5000) The optimal working dilution should be determined by the end user.
Storage Buffer	In PBS (10 mM sodium azide)
Storage Instruction	Store at 4°C. For long term storage store at -20°C. Aliquot to avoid repeated freezing and thawing.
Note	This product contains sodium azide: a POISONOUS AND HAZARDOUS SUBSTANCE which should be handled by trained staff only.

Applications

- Western Blot (Tissue lysate)

Western blot analysis of bovine retinal extracts using RHO monoclonal antibody, clone B630 (Cat # MAB12502) at 1:5000 dilution.

- Immunohistochemistry (Formalin/PFA-fixed paraffin-embedded sections)

Immunohistochemical staining (Formalin-fixed paraffin-embedded sections) of human retina tissue with RHO monoclonal antibody, clone B630 (Cat # MAB12502) under 10 ug/mL working concentration.

- Immunocytochemistry

- Immunofluorescence

Gene Info — RHO

Entrez GeneID	509933
Gene Name	RHO
Gene Alias	-
Gene Description	rhodopsin
Gene Ontology	Hyperlink
Gene Summary	rod pigment) (retinitis pigmentosa 4
Other Designations	rhodopsin (opsin 2, rod pigment) (retinitis pigmentosa 4, autosomal dominant)