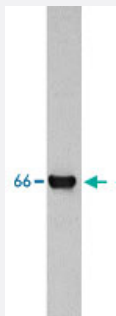


# Ina monoclonal antibody, clone 2E3

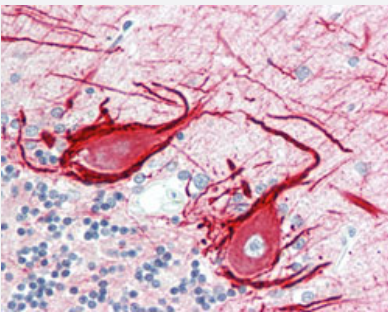
Catalog # MAB12498      Size 100 uL

## Applications



### Western Blot (Tissue lysate)

Western blot analysis of rat facial nucleus homogenate using Ina monoclonal antibody, clone 2E3 (Cat # MAB12498) at 1:10000 dilution.



### Immunohistochemistry (Formalin/PFA-fixed paraffin-embedded sections)

Immunohistochemical staining (Formalin-fixed paraffin-embedded sections) of human cerebellum tissue with Ina monoclonal antibody, clone 2E3 (Cat # MAB12498) at 1:5000 dilution.

## Specification

<b>Product Description</b>	Mouse monoclonal antibody raised against full length recombinant rat Ina.
<b>Immunogen</b>	Recombinant protein corresponding to full length rat Ina.
<b>Host</b>	Mouse
<b>Reactivity</b>	Human, Rat
<b>Form</b>	Liquid
<b>Isotype</b>	IgG1

<b>Recommend Usage</b>	Immunofluorescence (1:500) Immunohistochemistry (1:5000) Immunohistochemistry (Formalin/PFA-fixed paraffin-embedded sections) (1:50) Western Blot (1:10000) The optimal working dilution should be determined by the end user.
------------------------	--

<b>Storage Buffer</b>	In tissue culture supernatant
-----------------------	-------------------------------

<b>Storage Instruction</b>	Store at 4°C. For long term storage store at -20°C. Aliquot to avoid repeated freezing and thawing.
----------------------------	--

## Applications

- Western Blot (Tissue lysate)

Western blot analysis of rat facial nucleus homogenate using Ina monoclonal antibody, clone 2E3 (Cat # MAB12498) at 1:10000 dilution.

- Immunohistochemistry (Formalin/PFA-fixed paraffin-embedded sections)

Immunohistochemical staining (Formalin-fixed paraffin-embedded sections) of human cerebellum tissue with Ina monoclonal antibody, clone 2E3 (Cat # MAB12498) at 1:5000 dilution.

- Immunohistochemistry

- Immunofluorescence

## Gene Info — Ina

<b>Entrez GeneID</b>	<a href="#">24503</a>
----------------------	-----------------------

<b>Gene Name</b>	Ina
------------------	-----

<b>Gene Alias</b>	Inexa, Intlaa, Nf66
-------------------	---------------------

<b>Gene Description</b>	internexin neuronal intermediate filament protein, alpha
-------------------------	--

<b>Gene Ontology</b>	<a href="#">Hyperlink</a>
----------------------	---------------------------

<b>Gene Summary</b>	O
---------------------	---

<b>Other Designations</b>	internexin, alpha
---------------------------	-------------------