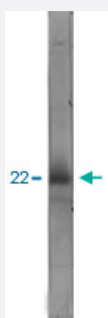


# VSNL1 monoclonal antibody, clone 2D11

Catalog # MAB12497

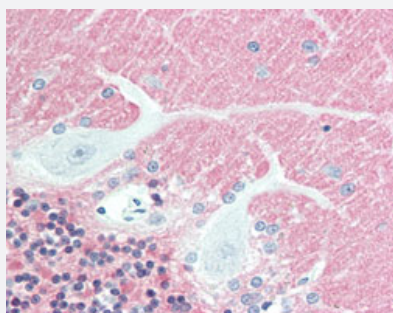
Size 50 uL

## Applications



### Western Blot (Tissue lysate)

Western blot analysis of bovine cerebellum homogenate using VSNL1 monoclonal antibody, clone 2D11 (Cat # MAB12497) at 1:1000-1:2000 dilution.



### Immunohistochemistry (Formalin/PFA-fixed paraffin-embedded sections)

Immunohistochemical staining (Formalin-fixed paraffin-embedded sections) of human cerebellum tissue with VSNL1 monoclonal antibody, clone 2D11 (Cat # MAB12497) under 10 ug/mL working concentration.

## Specification

<b>Product Description</b>	Mouse monoclonal antibody raised against full length recombinant human VSNL1.
<b>Immunogen</b>	Recombinant protein corresponding to full length human VSNL1.
<b>Host</b>	Mouse
<b>Reactivity</b>	Bovine, Human
<b>Form</b>	Liquid
<b>Purification</b>	Affinity purification
<b>Isotype</b>	IgG1

<b>Recommend Usage</b>	Immunofluorescence (1:500-1:1000) Immunohistochemistry (1:500-1:1000) Immunohistochemistry (Formalin/PFA-fixed paraffin-embedded sections) (10 ug/mL) Western Blot (1:1000-1:2000) The optimal working dilution should be determined by the end user.
<b>Storage Buffer</b>	In PBS (10 mM sodium azide)
<b>Storage Instruction</b>	Store at 4°C. For long term storage store at -20°C. Aliquot to avoid repeated freezing and thawing.
<b>Note</b>	This product contains sodium azide: a POISONOUS AND HAZARDOUS SUBSTANCE which should be handled by trained staff only.

## Applications

- Western Blot (Tissue lysate)

Western blot analysis of bovine cerebellum homogenate using VSNL1 monoclonal antibody, clone 2D11 (Cat # MAB12497) at 1:1000-1:2000 dilution.

- Immunohistochemistry (Formalin/PFA-fixed paraffin-embedded sections)

Immunohistochemical staining (Formalin-fixed paraffin-embedded sections) of human cerebellum tissue with VSNL1 monoclonal antibody, clone 2D11 (Cat # MAB12497) under 10 ug/mL working concentration.

- Immunohistochemistry

- Immunofluorescence

## Gene Info — VSNL1

<b>Entrez GeneID</b>	<a href="#">7447</a>
<b>Protein Accession#</b>	<a href="#">P62760</a>
<b>Gene Name</b>	VSNL1
<b>Gene Alias</b>	HLP3, HPCAL3, HUVISL1, VILIP, VILIP-1
<b>Gene Description</b>	visinin-like 1
<b>Omim ID</b>	<a href="#">600817</a>
<b>Gene Ontology</b>	<a href="#">Hyperlink</a>

**Gene Summary**

This gene is a member of the visinin/recoverin subfamily of neuronal calcium sensor proteins. The encoded protein is strongly expressed in granule cells of the cerebellum where it associates with membranes in a calcium-dependent manner and modulates intracellular signaling pathways of the central nervous system by directly or indirectly regulating the activity of adenylyl cyclase. Alternatively spliced transcript variants have been observed, but their full-length nature has not been determined. [provided by RefSeq]

**Other Designations**

OTTHUMP00000115804|hippocalcin-like protein 3

**Disease**

- [Genetic Predisposition to Disease](#)
- [Schizophrenia](#)