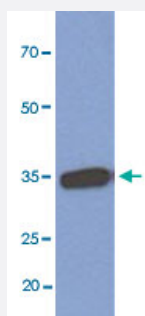


# MFAP4 monoclonal antibody, clone AT12D11

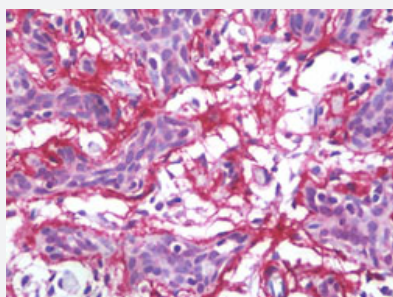
Catalog # MAB12475      Size 50 uL

## Applications



### Western Blot (Tissue lysate)

Western blot analysis of human lung tissue lysate using MFAP4 monoclonal antibody, clone AT12D11 (Cat # MAB12475) at 1:1000 dilution.



### Immunohistochemistry (Formalin/PFA-fixed paraffin-embedded sections)

Immunohistochemical staining (Formalin-fixed paraffin-embedded sections) of human breast with MFAP4 monoclonal antibody, clone AT12D11 (Cat # MAB12475) under 10 ug/mL working concentration.

## Specification

<b>Product Description</b>	Mouse monoclonal antibody raised against partial recombinant human MFAP4.
<b>Immunogen</b>	Recombinant protein corresponding to amino acids 22-255 of human MFAP4.
<b>Host</b>	Mouse
<b>Reactivity</b>	Human
<b>Form</b>	Liquid
<b>Purification</b>	Protein A purification
<b>Isotype</b>	IgG1, kappa

<b>Recommend Usage</b>	ELISA Immunohistochemistry (Formalin/PFA-fixed paraffin-embedded sections) (10 ug/mL) Western Blot (1:1000) The optimal working dilution should be determined by the end user.
<b>Storage Buffer</b>	In PBS, pH 7.4 (10% glycerol, 0.02% sodium azide)
<b>Storage Instruction</b>	Store at 4°C. For long term storage store at -20°C. Aliquot to avoid repeated freezing and thawing.
<b>Note</b>	This product contains sodium azide: a POISONOUS AND HAZARDOUS SUBSTANCE which should be handled by trained staff only.

## Applications

- Western Blot (Tissue lysate)

Western blot analysis of human lung tissue lysate using MFAP4 monoclonal antibody, clone AT12D11 (Cat # MAB12475) at 1:1000 dilution.

- Immunohistochemistry (Formalin/PFA-fixed paraffin-embedded sections)

Immunohistochemical staining (Formalin-fixed paraffin-embedded sections) of human breast with MFAP4 monoclonal antibody, clone AT12D11 (Cat # MAB12475) under 10 ug/mL working concentration.

- Enzyme-linked Immunoabsorbent Assay

## Gene Info — MFAP4

<b>Entrez GeneID</b>	<a href="#">4239</a>
<b>Protein Accession#</b>	<a href="#">P55083</a>
<b>Gene Name</b>	MFAP4
<b>Gene Alias</b>	-
<b>Gene Description</b>	microfibrillar-associated protein 4
<b>Omim ID</b>	<a href="#">600596</a>
<b>Gene Ontology</b>	<a href="#">Hyperlink</a>
<b>Gene Summary</b>	This gene encodes a protein with similarity to a bovine microfibril-associated protein. The protein has binding specificities for both collagen and carbohydrate. It is thought to be an extracellular matrix protein which is involved in cell adhesion or intercellular interactions. The gene is located within the Smith-Magenis syndrome region. [provided by RefSeq]

**Other Designations**microfibril-associated glycoprotein 4

---

**Disease**

- [Abnormalities](#)
- [Chromosome Deletion](#)
- [Genetic Predisposition to Disease](#)
- [Mental Retardation](#)
- [Obesity](#)
- [Ovarian Neoplasms](#)
- [Syndrome](#)