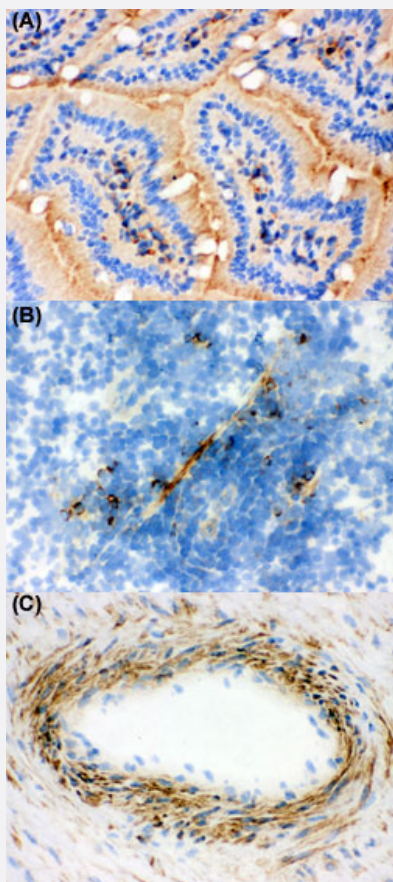


Actin monoclonal antibody, clone AC-40

Catalog # MAB12450 Size 100 ug

Applications



Immunohistochemistry (Frozen sections)

Immunohistochemical staining of mouse intestine tissue (A), rat spleen tissue (B), human placenta tissue (C) with Actin monoclonal antibody, clone AC-40 (Cat# MAB12450) under 4 ug/mL working concentration.

Specification

Product Description	Mouse monoclonal antibody raised against partial synthetic peptide of actin.
Immunogen	A synthetic peptide corresponding to at the C-terminus of actin. (Multiple Antigen Peptide backbone)
Sequence	SGPSVHRKCF
Host	Mouse

Reactivity	Chicken, Human, Mouse, Rat
Form	Lyophilized
Isotype	IgG2a
Recommend Usage	Immunohistochemistry (4 ug/mL) Western Blot (2 ug/mL) The optimal working dilution should be determined by the end user.
Storage Buffer	Lyophilized from ascites fluid (1.2 % sodium acetate, 2 mg BSA, 0.01 mg sodium azide)
Storage Instruction	Store at -20°C. After reconstitution with 1 mL of 1.2% sodium acetate or neutral PBS and concentration will be 100 ug/mL, store at -20°C. Aliquot to avoid repeated freezing and thawing.
Note	This product contains sodium azide: a POISONOUS AND HAZARDOUS SUBSTANCE which should be handled by trained staff only.

Applications

- Western Blot
- Immunohistochemistry (Frozen sections)

Immunohistochemical staining of mouse intestine tissue (A), rat spleen tissue (B), human placenta tissue (C) with Actin monoclonal antibody, clone AC-40 (Cat# MAB12450) under 4 ug/mL working concentration.