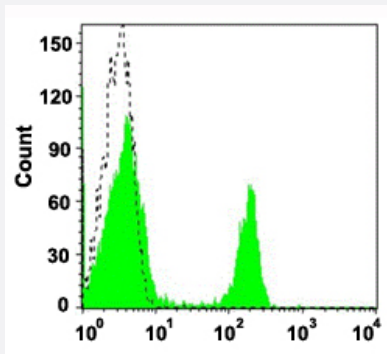


Cd4 monoclonal antibody, clone 4AM15 (FITC)

Catalog # MAB12417 Size 50 Reactions

Applications



Flow Cytometry

Flow cytometric analysis of mouse spleen cells reacted with Cd4 monoclonal antibody, clone 4AM15 (FITC) (Cat # MAB12417).

Specification

Product Description	Rat monoclonal antibody raised against mouse Cd4.
Immunogen	Cd4
Host	Rat
Reactivity	Mouse
Form	Liquid
Conjugation	FITC
Purification	Protein A/G affinity chromatography
Isotype	IgG2b
Recommend Usage	Flow cytometry Immunofluorescence The optimal working dilution should be determined by the end user.
Storage Buffer	In PBS, pH 7.4 (0.09% sodium azide, 0.2% BSA)

Storage Instruction

Store at 4°C. Do not freeze.

Note

This product contains sodium azide: a POISONOUS AND HAZARDOUS SUBSTANCE which should be handled by trained staff only.

Applications

- Immunofluorescence
- Flow Cytometry

Flow cytometric analysis of mouse spleen cells reacted with Cd4 monoclonal antibody, clone 4AM15 (FITC) (Cat # MAB12417).

Gene Info — Cd4

Entrez GeneID[12504](#)**Gene Name**

Cd4

Gene Alias

L3T4, Ly-4

Gene Description

CD4 antigen

Gene Ontology[Hyperlink](#)**Other Designations**

OTTMUSP00000027399|T-cell surface glycoprotein CD4 precursor (T-cell surface antigen T4/Leu-3) (T-cell differentiation antigen L3T4)