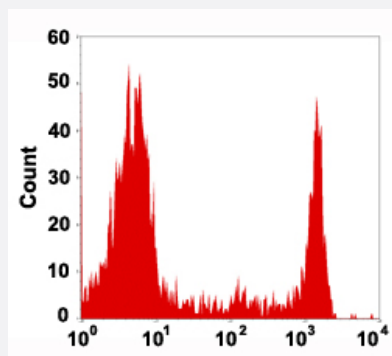


# CD8A monoclonal antibody, clone COV8 (PE)

Catalog # MAB12380      Size 50 Reactions

## Applications



### Flow Cytometry

Flow cytometric analysis of human peripheral blood lymphocytes reacted with CD8A monoclonal antibody, clone COV8 (PE) (Cat # MAB12380).

## Specification

<b>Product Description</b>	Mouse monoclonal antibody raised against human CD8A.
<b>Immunogen</b>	CD8A
<b>Host</b>	Mouse
<b>Reactivity</b>	Human
<b>Form</b>	Liquid
<b>Conjugation</b>	PE
<b>Purification</b>	Protein A/G affinity chromatography
<b>Isotype</b>	IgG1
<b>Recommend Usage</b>	Flow cytometry Immunofluorescence The optimal working dilution should be determined by the end user.
<b>Storage Buffer</b>	In PBS, pH 7.4 (0.09% sodium azide, 0.2% BSA)

## Storage Instruction

Store at 4°C. Do not freeze.

## Note

This product contains sodium azide: a POISONOUS AND HAZARDOUS SUBSTANCE which should be handled by trained staff only.

## Applications

- Immunofluorescence

- Flow Cytometry

Flow cytometric analysis of human peripheral blood lymphocytes reacted with CD8A monoclonal antibody, clone COV8 (PE) (Cat # MAB12380).

## Gene Info — CD8A

### Entrez GeneID

[925](#)

### Gene Name

CD8A

### Gene Alias

CD8, Leu2, MAL, p32

### Gene Description

CD8a molecule

### Omim ID

[186910 608957](#)

### Gene Ontology

[Hyperlink](#)

### Gene Summary

The CD8 antigen is a cell surface glycoprotein found on most cytotoxic T lymphocytes that mediates efficient cell-cell interactions within the immune system. The CD8 antigen acts as a coreceptor with the T-cell receptor on the T lymphocyte to recognize antigens displayed by an antigen presenting cell (APC) in the context of class I MHC molecules. The coreceptor functions as either a homodimer composed of two alpha chains, or as a heterodimer composed of one alpha and one beta chain. Both alpha and beta chains share significant homology to immunoglobulin variable light chains. This gene encodes the CD8 alpha chain isoforms. Multiple transcript variants encoding different isoforms have been found for this gene. [provided by RefSeq]

### Other Designations

CD8 antigen alpha polypeptide|CD8 antigen, alpha polypeptide (p32)|Leu2 T-lymphocyte antigen|OKT8 T-cell antigen|T cell co-receptor|T-cell antigen Leu2|T-cell surface glycoprotein CD8 alpha chain|T-lymphocyte differentiation antigen T8/Leu-2|T8 T-cell ant

## Pathway

- [Antigen processing and presentation](#)

- [Cell adhesion molecules \(CAMs\)](#)
- [Hematopoietic cell lineage](#)
- [Primary immunodeficiency](#)
- [T cell receptor signaling pathway](#)