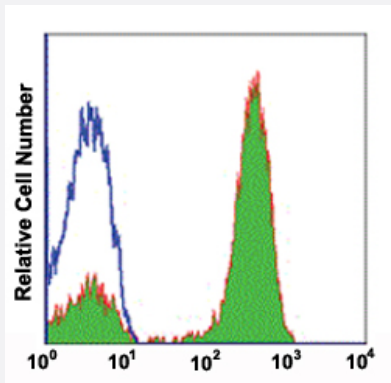


CD3 monoclonal antibody, clone 4AT3 (FITC)

Catalog # MAB12367 Size 50 Reactions

Applications



Flow Cytometry

Flow cytometric analysis of human peripheral blood lymphocytes reacted with CD3 monoclonal antibody, clone 4AT3 (FITC) (Cat # MAB12367).

Specification

Product Description	Mouse monoclonal antibody raised against human CD3.
Immunogen	CD3
Host	Mouse
Reactivity	Human
Form	Liquid
Conjugation	FITC
Purification	Protein A/G affinity chromatography
Isotype	IgG2a
Recommend Usage	Flow cytometry Immunofluorescence The optimal working dilution should be determined by the end user.
Storage Buffer	In PBS, pH 7.4 (0.09% sodium azide, 0.2% BSA)

Storage Instruction

Store at 4°C. Do not freeze.

Note

This product contains sodium azide: a POISONOUS AND HAZARDOUS SUBSTANCE which should be handled by trained staff only.

Applications

- Immunofluorescence

- Flow Cytometry

Flow cytometric analysis of human peripheral blood lymphocytes reacted with CD3 monoclonal antibody, clone 4AT3 (FITC) (Cat # MAB12367).