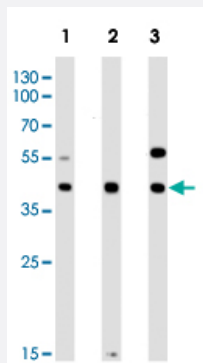


ATG3 monoclonal antibody, clone 1377CT239.6.1.12

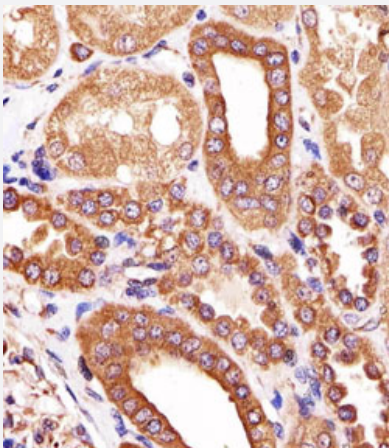
Catalog # MAB12360 Size 400 uL

Applications



Western Blot

Western blot analysis of Lane 1: THP-1 cell line lysates Lane 2: mouse liver tissue lysates Lane 3: mouse testis tissue lysates reacted with ATG3 monoclonal antibody (Cat # MAB12360) at 1:1000 dilution.



Immunohistochemistry (Formalin/PFA-fixed paraffin-embedded sections)

Immunohistochemical staining of paraffin-embedded human kidney section reacted with ATG3 monoclonal antibody (Cat # MAB12360) at 1:25 dilution.

Specification

| | |
|----------------------------|--|
| Product Description | Mouse monoclonal antibody raised against human ATG3. |
| Immunogen | Recombinant protein corresponding to human ATG3. |
| Host | Mouse |
| Reactivity | Human, Mouse |
| Form | Liquid |

| | |
|---------------------|--|
| Purification | Protein G purification |
| Isotype | IgG1, kappa |
| Recommend Usage | Immunohistochemistry (1:25) Western Blot (1:2000) The optimal working dilution should be determined by the end user. |
| Storage Buffer | In PBS (0.09% sodium azide) |
| Storage Instruction | Store at 4°C. For long term storage store at -20°C. Aliquot to avoid repeated freezing and thawing. |
| Note | This product contains sodium azide: a POISONOUS AND HAZARDOUS SUBSTANCE which should be handled by trained staff only. |

Applications

- Western Blot

Western blot analysis of Lane 1: THP-1 cell line lysates Lane 2: mouse liver tissue lysates Lane 3: mouse testis tissue lysates reacted with ATG3 monoclonal antibody (Cat # MAB12360) at 1:1000 dilution.

- Immunohistochemistry (Formalin/PFA-fixed paraffin-embedded sections)

Immunohistochemical staining of paraffin-embedded human kidney section reacted with ATG3 monoclonal antibody (Cat # MAB12360) at 1:25 dilution.

Gene Info — ATG3

| | |
|------------------|---|
| Entrez GeneID | 64422 |
| Gene Name | ATG3 |
| Gene Alias | APG3, APG3-LIKE, APG3L, DKFZp564M1178, FLJ22125, MGC15201, PC3-96 |
| Gene Description | ATG3 autophagy related 3 homolog (S. cerevisiae) |
| Omim ID | 609606 |
| Gene Ontology | Hyperlink |
| Gene Summary | Autophagy is a process of bulk degradation of cytoplasmic components by the lysosome or vacuole. Human ATG3 displays the same enzymatic characteristics in vitro as yeast Apg3, a protein-conjugating enzyme essential for autophagy (Tanida et al., 2002 [PubMed 11825910]).[supplied by OMIM] |

Other Designations

2610016C12Rik|APG3 autophagy 3-like|Apg3p|autophagy Apg3p/Aut1p-like

Pathway

- [Regulation of autophagy](#)

Disease

- [Huntington Disease](#)