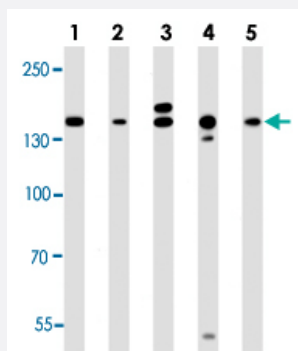


# RPTOR monoclonal antibody, clone 1411CT316.2.151.34

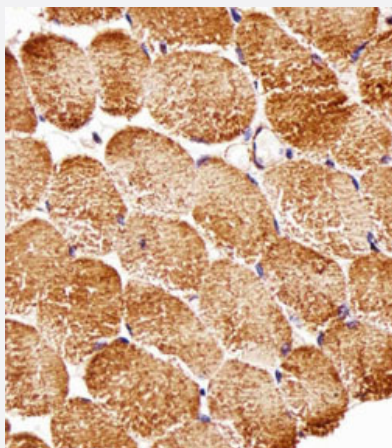
Catalog # MAB12359      Size 400 uL

## Applications



### Western Blot (Cell lysate)

Western blot analysis of Lane 1: Hela cell line lysates Lane 2: MCF-7 cell line lysates Lane 3: mouse C2C12 cell line lysates Lane 4: mouse NIH/3T3 cell line lysates Lane 5: rat C6 cell line lysates reacted with RPTOR monoclonal antibody (Cat # MAB12359) at 1:1000 dilution.



### Immunohistochemistry (Formalin/PFA-fixed paraffin-embedded sections)

Immunohistochemical staining of paraffin-embedded human skeletal muscle section reacted with RPTOR monoclonal antibody (Cat # MAB12359) at 1:25 dilution.

## Specification

<b>Product Description</b>	Mouse monoclonal antibody raised against human RPTOR.
<b>Immunogen</b>	Recombinant protein corresponding to human RPTOR.
<b>Host</b>	Mouse
<b>Reactivity</b>	Human, Mouse, Rat
<b>Form</b>	Liquid

Purification	Protein G purification
Isotype	IgG1, kappa
Recommend Usage	Immunohistochemistry (1:25) Western Blot (1:500-1:1000) The optimal working dilution should be determined by the end user.
Storage Buffer	In PBS (0.09% sodium azide)
Storage Instruction	Store at 4°C. For long term storage store at -20°C. Aliquot to avoid repeated freezing and thawing.
Note	This product contains sodium azide: a POISONOUS AND HAZARDOUS SUBSTANCE which should be handled by trained staff only.

## Applications

- Western Blot (Cell lysate)

Western blot analysis of Lane 1: HeLa cell line lysates Lane 2: MCF-7 cell line lysates Lane 3: mouse C2C12 cell line lysates Lane 4: mouse NIH/3T3 cell line lysates Lane 5: rat C6 cell line lysates reacted with RPTOR monoclonal antibody (Cat # MAB12359) at 1:1000 dilution.

- Immunohistochemistry (Formalin/PFA-fixed paraffin-embedded sections)

Immunohistochemical staining of paraffin-embedded human skeletal muscle section reacted with RPTOR monoclonal antibody (Cat # MAB12359) at 1:25 dilution.

## Gene Info — RPTOR

Entrez GeneID	<a href="#">57521</a>
Gene Name	RPTOR
Gene Alias	KOG1, Mip1
Gene Description	regulatory associated protein of MTOR, complex 1
Omim ID	<a href="#">607130</a>
Gene Ontology	<a href="#">Hyperlink</a>

**Gene Summary**

This gene encodes a component of a signaling pathway that regulates cell growth in response to nutrient and insulin levels. The encoded protein forms a stoichiometric complex with the mTOR kinase, and also associates with eukaryotic initiation factor 4E-binding protein-1 and ribosomal protein S6 kinase. The protein positively regulates the downstream effector ribosomal protein S6 kinase, and negatively regulates the mTOR kinase. Multiple transcript variants encoding different isoforms have been found for this gene. [provided by RefSeq]

**Other Designations**

p150 target of rapamycin (TOR)-scaffold protein containing WD-repeats|regulatory associated protein of mTOR

## Pathway

- [Insulin signaling pathway](#)
- [mTOR signaling pathway](#)

## Disease

- [Genetic Predisposition to Disease](#)
- [Tobacco Use Disorder](#)
- [Urinary Bladder Neoplasms](#)