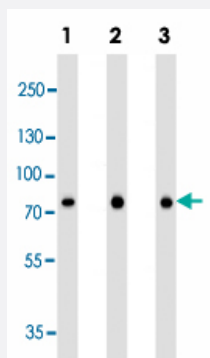


CAPN2 monoclonal antibody, clone 1381CT669.7.66.71

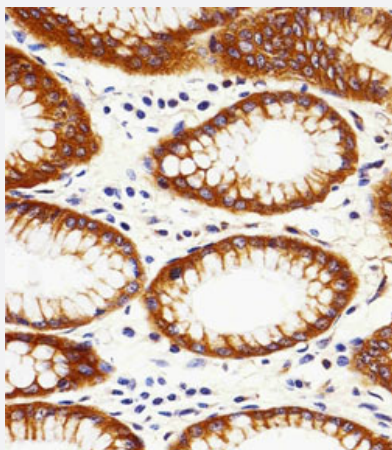
Catalog # MAB12357 Size 400 uL

Applications



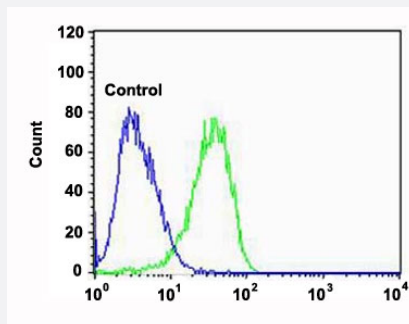
Western Blot (Cell lysate)

Western blot analysis of Lane 1: A549 cell line lysates Lane 2: A431 cell line lysates Lane 3: SK-BR-3 cell line lysates reacted with CAPN2 monoclonal antibody (Cat # MAB12357) at 1:1000 dilution.



Immunohistochemistry (Formalin/PFA-fixed paraffin-embedded sections)

Immunohistochemical staining of paraffin-embedded human stomach section reacted with CAPN2 monoclonal antibody (Cat # MAB12357) at 1:25 dilution.



Flow Cytometry

Flow cytometric analysis of U-87 MG cells (green histogram) and an isotype control of mouse IgG2b (blue histogram) reacted with CAPN2 monoclonal antibody (Cat # MAB12357) at 1:100 dilution.

Specification

Product Description	Mouse monoclonal antibody raised against synthetic peptide of human CAPN2.
Immunogen	A synthetic peptide (conjugated with KLH) corresponding to human CAPN2.
Host	Mouse
Reactivity	Human
Form	Liquid
Purification	Protein G purification
Isotype	IgG2b
Recommend Usage	Flow Cytometry (1:100) Immunohistochemistry (1:25) Western Blot (1:1000) The optimal working dilution should be determined by the end user.
Storage Buffer	In PBS (0.09% sodium azide)
Storage Instruction	Store at 4°C. For long term storage store at -20°C. Aliquot to avoid repeated freezing and thawing.
Note	This product contains sodium azide: a POISONOUS AND HAZARDOUS SUBSTANCE which should be handled by trained staff only.

Applications

- Western Blot (Cell lysate)

Western blot analysis of Lane 1: A549 cell line lysates Lane 2: A431 cell line lysates Lane 3: SK-BR-3 cell line lysates reacted with CAPN2 monoclonal antibody (Cat # MAB12357) at 1:1000 dilution.

- Immunohistochemistry (Formalin/PFA-fixed paraffin-embedded sections)

Immunohistochemical staining of paraffin-embedded human stomach section reacted with CAPN2 monoclonal antibody (Cat # MAB12357) at 1:25 dilution.

- Flow Cytometry

Flow cytometric analysis of U-87 MG cells (green histogram) and an isotype control of mouse IgG2b (blue histogram) reacted with CAPN2 monoclonal antibody (Cat # MAB12357) at 1:100 dilution.

Gene Info — CAPN2

Entrez GeneID	824
Gene Name	CAPN2
Gene Alias	CANP2, CANPL2, CANPml, FLJ39928, mCANP
Gene Description	calpain 2, (m//l) large subunit
Omim ID	114230
Gene Ontology	Hyperlink
Gene Summary	<p>The calpains, calcium-activated neutral proteases, are nonlysosomal, intracellular cysteine proteases. The mammalian calpains include ubiquitous, stomach-specific, and muscle-specific proteins. The ubiquitous enzymes consist of heterodimers with distinct large, catalytic subunits associated with a common small, regulatory subunit. This gene encodes the large subunit of the ubiquitous enzyme, calpain 2. Multiple heterogeneous transcriptional start sites in the 5' UTR have been reported. Two transcript variants encoding different isoforms have been found for this gene. [provided by RefSeq]</p>
Other Designations	M-calpain OTTHUMP00000035497 calcium-activated neutral proteinase calpain 2, large [catalytic] subunit calpain 2, large subunit calpain M-type calpain, large polypeptide L2 millimolar-calpain

Pathway

- [Apoptosis](#)
- [Focal adhesion](#)

Disease

- [Adenocarcinoma](#)
- [Cardiovascular Diseases](#)
- [Diabetes Mellitus](#)
- [Edema](#)
- [Esophageal Neoplasms](#)
- [Genetic Predisposition to Disease](#)
- [Parkinson disease](#)
- [Tobacco Use Disorder](#)