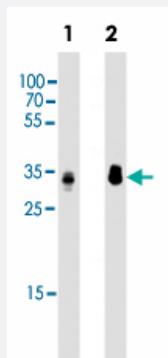


# PPT1 monoclonal antibody, clone 1117CT11.2.1.4

Catalog # MAB12348

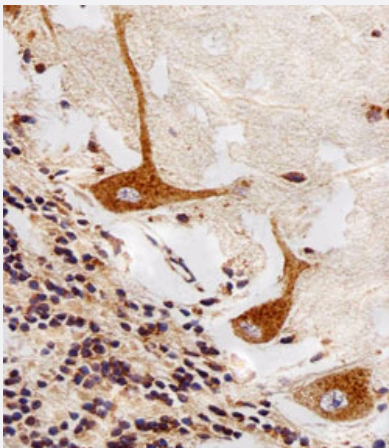
Size 400 uL

## Applications



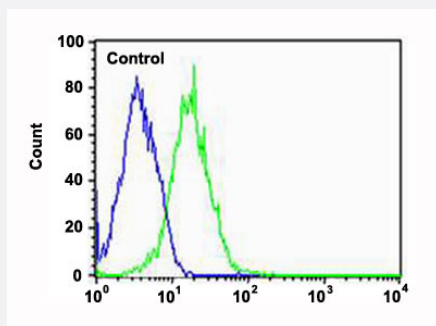
### Western Blot (Cell lysate)

Western blot analysis of Lane 1: Hela whole cell lysates Lane 2: HepG2 whole cell lysates reacted with PPT1 monoclonal antibody (Cat # MAB12348) at 1:2000 dilution.



### Immunohistochemistry (Formalin/PFA-fixed paraffin-embedded sections)

Immunohistochemical staining of paraffin-embedded human cerebellum section reacted with PPT1 monoclonal antibody (Cat # MAB12348) at 1:25 dilution.



### Flow Cytometry

Flow cytometric analysis of HepG2 cells (green histogram) and an isotype control of mouse IgG1 (blue histogram) reacted with PPT1 monoclonal antibody (Cat # MAB12348) at 1:25 dilution.

## Specification

<b>Product Description</b>	Mouse monoclonal antibody raised against full length recombinant human PPT1.
<b>Immunogen</b>	Recombinant protein corresponding to full length human PPT1.
<b>Host</b>	Mouse
<b>Reactivity</b>	Human
<b>Form</b>	Liquid
<b>Purification</b>	Protein G purification
<b>Isotype</b>	IgG1
<b>Recommend Usage</b>	Flow Cytometry (1:25) Immunohistochemistry (1:25) Western Blot (1:1000) The optimal working dilution should be determined by the end user.
<b>Storage Buffer</b>	In PBS (0.09% sodium azide)
<b>Storage Instruction</b>	Store at 4°C. For long term storage store at -20°C. Aliquot to avoid repeated freezing and thawing.
<b>Note</b>	This product contains sodium azide: a POISONOUS AND HAZARDOUS SUBSTANCE which should be handled by trained staff only.

## Applications

- Western Blot (Cell lysate)

Western blot analysis of Lane 1: Hela whole cell lysates Lane 2: HepG2 whole cell lysates reacted with PPT1 monoclonal antibody (Cat # MAB12348) at 1:2000 dilution.

- Immunohistochemistry (Formalin/PFA-fixed paraffin-embedded sections)

Immunohistochemical staining of paraffin-embedded human cerebellum section reacted with PPT1 monoclonal antibody (Cat # MAB12348) at 1:25 dilution.

- Flow Cytometry

Flow cytometric analysis of HepG2 cells (green histogram) and an isotype control of mouse IgG1 (blue histogram) reacted with PPT1 monoclonal antibody (Cat # MAB12348) at 1:25 dilution.

## Gene Info — PPT1

Entrez GeneID	<a href="#">5538</a>
Gene Name	PPT1
Gene Alias	CLN1, INCL, PPT
Gene Description	palmitoyl-protein thioesterase 1
Omim ID	<a href="#">256730</a> <a href="#">600722</a>
Gene Ontology	<a href="#">Hyperlink</a>
Gene Summary	The protein encoded by this gene is a small glycoprotein involved in the catabolism of lipid-modified proteins during lysosomal degradation. The encoded enzyme removes thioester-linked fatty acyl groups such as palmitate from cysteine residues. Defects in this gene are a cause of infantile neuronal ceroid lipofuscinosis 1 (CLN1, or INCL) and neuronal ceroid lipofuscinosis 4 (CLN4). Two transcript variants encoding different isoforms have been found for this gene
Other Designations	OTTHUMP00000004836 ceroid-palmitoyl-palmitoyl-protein thioesterase 1 palmitoyl-protein hydrolase 1

## Pathway

- [Fatty acid elongation in mitochondria](#)
- [Lysosome](#)
- [Metabolic pathways](#)

## Disease

- [Dominance](#)
- [Neuronal Ceroid-Lipofuscinoses](#)
- [Schizophrenia](#)