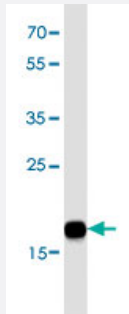


# NME1 monoclonal antibody, clone 1172CT2.4.1.1

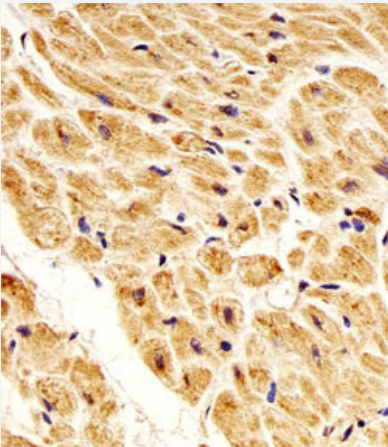
Catalog # MAB12337      Size 400 uL

## Applications



### Western Blot (Cell lysate)

Western blot analysis of MCF-7 cell line lysates reacted with NME1 monoclonal antibody (Cat # MAB12337) at 1:1000 dilution.



### Immunohistochemistry (Formalin/PFA-fixed paraffin-embedded sections)

Immunohistochemical staining of paraffin-embedded human heart section reacted with NME1 monoclonal antibody (Cat # MAB12337) at 1:25 dilution.

## Specification

Product Description	Mouse monoclonal antibody raised against human NME1.
Immunogen	Recombinant His fusion protein corresponding to human NME1.
Host	Mouse
Reactivity	Human
Form	Liquid

Purification	Protein G purification
Isotype	IgG2a
Recommend Usage	Immunohistochemistry (1:25) Western Blot (1:1000) The optimal working dilution should be determined by the end user.
Storage Buffer	In PBS (0.09% sodium azide)
Storage Instruction	Store at 4°C. For long term storage store at -20°C. Aliquot to avoid repeated freezing and thawing.
Note	This product contains sodium azide: a POISONOUS AND HAZARDOUS SUBSTANCE which should be handled by trained staff only.

## Applications

- Western Blot (Cell lysate)

Western blot analysis of MCF-7 cell line lysates reacted with NME1 monoclonal antibody (Cat # MAB12337) at 1:1000 dilution.

- Immunohistochemistry (Formalin/PFA-fixed paraffin-embedded sections)

Immunohistochemical staining of paraffin-embedded human heart section reacted with NME1 monoclonal antibody (Cat # MAB12337) at 1:25 dilution.

## Gene Info — NME1

Entrez GeneID	<a href="#">4830</a>
Gene Name	NME1
Gene Alias	AWD, GAAD, NB, NBS, NDPK-A, NDPKA, NM23, NM23-H1
Gene Description	non-metastatic cells 1, protein (NM23A) expressed in
Omim ID	<a href="#">156490</a> <a href="#">256700</a>
Gene Ontology	<a href="#">Hyperlink</a>
Gene Summary	This gene (NME1) was identified because of its reduced mRNA transcript levels in highly metastatic cells. Nucleoside diphosphate kinase (NDK) exists as a hexamer composed of 'A' (encoded by this gene) and 'B' (encoded by NME2) isoforms. Mutations in this gene have been identified in aggressive neuroblastomas. Two transcript variants encoding different isoforms have been found for this gene. Co-transcription of this gene and the neighboring downstream gene (NME2) generates naturally-occurring transcripts (NME1-NME2), which encodes a fusion protein comprised of sequence sharing identity with each individual gene product. [provided by RefSeq]

## Other Designations

NDP kinase A|OTTHUMP00000174772

## Pathway

- [Metabolic pathways](#)
- [Purine metabolism](#)
- [Pyrimidine metabolism](#)

## Disease

- [Breast cancer](#)
- [Breast Neoplasms](#)
- [Carcinoma](#)
- [Endometrial Neoplasms](#)
- [Genetic Predisposition to Disease](#)
- [Lung Neoplasms](#)
- [Neoplasm Metastasis](#)