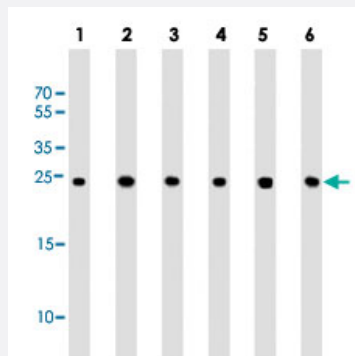


# PSMA5 monoclonal antibody, clone 426CT8.5.1

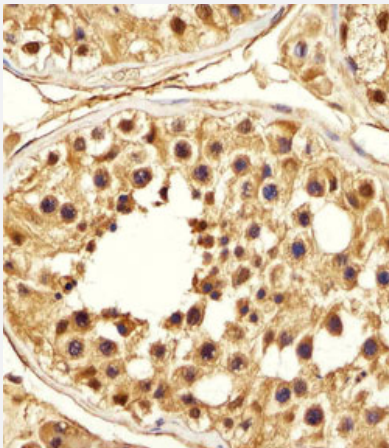
Catalog # MAB12318      Size 400 uL

## Applications



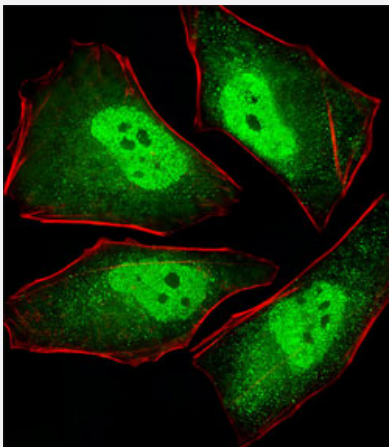
### Western Blot (Cell lysate)

Western blot analysis of Lane 1: human liver lysates Lane 2: Hela whole cell lysates Lane 3: HepG2 whole cell lysates Lane 4: MCF-7 whole cell lysates Lane 5: Neuro-2a whole cell lysates Lane 6: PC-12 whole cell lysates reacted with PSMA5 monoclonal antibody (Cat # MAB12318) at 1:1000 dilution.



### Immunohistochemistry (Formalin/PFA-fixed paraffin-embedded sections)

Immunohistochemical staining of formalin-fixed and paraffin-embedded human testis section reacted with PSMA5 monoclonal antibody (Cat # MAB12318) at 1:25 dilution.



### Immunofluorescence

Immunofluorescent staining of Hela cells reacted with PSMA5 monoclonal antibody (Cat # MAB12318) at 1:25 dilution.

## Specification

Product Description	Mouse monoclonal antibody raised against partial recombinant human PSMA5.
Immunogen	Recombinant His fusion protein corresponding to human PSMA5.
Host	Mouse
Reactivity	Human, Mouse, Rat
Form	Liquid
Purification	Protein G purification
Isotype	IgG1
Recommend Usage	Immunohistochemistry (1:25) Immunofluorescence (1:25) Western Blot (1:100-1:500) The optimal working dilution should be determined by the end user.
Storage Buffer	In PBS (0.09% sodium azide)
Storage Instruction	Store at 4°C. For long term storage store at -20°C. Aliquot to avoid repeated freezing and thawing.
Note	This product contains sodium azide: a POISONOUS AND HAZARDOUS SUBSTANCE which should be handled by trained staff only.

## Applications

- Western Blot (Cell lysate)

Western blot analysis of Lane 1: human liver lysates Lane 2: Hela whole cell lysates Lane 3: HepG2 whole cell lysates Lane 4: MCF-7 whole cell lysates Lane 5: Neuro-2a whole cell lysates Lane 6: PC-12 whole cell lysates reacted with PSMA5 monoclonal antibody (Cat # MAB12318) at 1:1000 dilution.

- Immunohistochemistry (Formalin/PFA-fixed paraffin-embedded sections)

Immunohistochemical staining of formalin-fixed and paraffin-embedded human testis section reacted with PSMA5 monoclonal antibody (Cat # MAB12318) at 1:25 dilution.

- Immunofluorescence

Immunofluorescent staining of Hela cells reacted with PSMA5 monoclonal antibody (Cat # MAB12318) at 1:25 dilution.

## Gene Info — PSMA5

Entrez GeneID	<a href="#">5686</a>
Gene Name	PSMA5
Gene Alias	MGC117302, MGC125802, MGC125803, MGC125804, PSC5, ZETA
Gene Description	proteasome (prosome, macropain) subunit, alpha type, 5
Omim ID	<a href="#">176844</a>
Gene Ontology	<a href="#">Hyperlink</a>
Gene Summary	<p>The proteasome is a multicatalytic proteinase complex with a highly ordered ring-shaped 20S core structure. The core structure is composed of 4 rings of 28 non-identical subunits; 2 rings are composed of 7 alpha subunits and 2 rings are composed of 7 beta subunits. Proteasomes are distributed throughout eukaryotic cells at a high concentration and cleave peptides in an ATP/ubiquitin-dependent process in a non-lysosomal pathway. An essential function of a modified proteasome, the immunoproteasome, is the processing of class I MHC peptides. This gene encodes a member of the peptidase T1A family, that is a 20S core alpha subunit. [provided by RefSeq]</p>
Other Designations	OTTHUMP00000013792 macropain subunit zeta macropain zeta chain multicatalytic endopeptidase complex zeta chain proteasome alpha 5 subunit proteasome component 5 proteasome subunit zeta proteasome zeta chain

## Pathway

- [Proteasome](#)