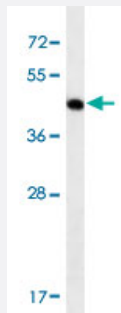


ACTA1 monoclonal antibody, clone 337CT30.10.1

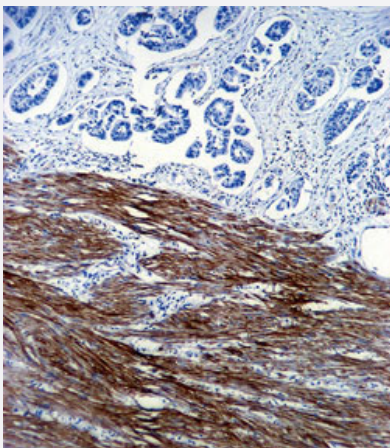
Catalog # MAB12316 Size 400 uL

Applications



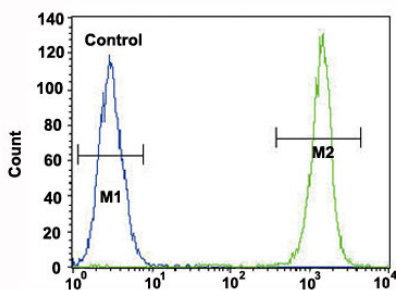
Western Blot (Cell lysate)

Western blot analysis of CEM cell line lysates reacted with ACTA1 monoclonal antibody (Cat # MAB12316) at 1:100-1:500 dilution.



Immunohistochemistry (Formalin/PFA-fixed paraffin-embedded sections)

Immunohistochemical staining of formalin-fixed and paraffin-embedded human colon carcinoma reacted with ACTA1 monoclonal antibody (Cat # MAB12316) at 1:10-1:50 dilution.



Flow Cytometry

Flow cytometric analysis of A549 cells (right histogram) and a negative control cell (left histogram) reacted with ACTA1 monoclonal antibody (Cat # MAB12316) at 1:10-1:50 dilution.

Specification

Product Description	Mouse monoclonal antibody raised against human ACTA1.
Immunogen	Recombinant protein corresponding to human ACTA1.
Host	Mouse
Reactivity	Human
Form	Liquid
Purification	Protein G purification
Isotype	IgG1, kappa
Recommend Usage	Flow Cytometry (1:10-1:50) Immunohistochemistry (1:10-1:50) Western Blot (1:100-1:500) The optimal working dilution should be determined by the end user.
Storage Buffer	In PBS (0.09% sodium azide)
Storage Instruction	Store at 4°C. For long term storage store at -20°C. Aliquot to avoid repeated freezing and thawing.
Note	This product contains sodium azide: a POISONOUS AND HAZARDOUS SUBSTANCE which should be handled by trained staff only.

Applications

- Western Blot (Cell lysate)

Western blot analysis of CEM cell line lysates reacted with ACTA1 monoclonal antibody (Cat # MAB12316) at 1:100-1:500 dilution.

- Immunohistochemistry (Formalin/PFA-fixed paraffin-embedded sections)

Immunohistochemical staining of formalin-fixed and paraffin-embedded human colon carcinoma reacted with ACTA1 monoclonal antibody (Cat # MAB12316) at 1:10-1:50 dilution.

- Flow Cytometry

Flow cytometric analysis of A549 cells (right histogram) and a negative control cell (left histogram) reacted with ACTA1 monoclonal antibody (Cat # MAB12316) at 1:10-1:50 dilution.

Gene Info — ACTA1

Entrez GeneID [58](#)

Gene Name	ACTA1
Gene Alias	ACTA, ASMA, CFTD, CFTD1, CFTDM, MPFD, NEM1, NEM2, NEM3
Gene Description	actin, alpha 1, skeletal muscle
Omim ID	102610 161800 255310
Gene Ontology	Hyperlink
Gene Summary	<p>The product encoded by this gene belongs to the actin family of proteins, which are highly conserved proteins that play a role in cell motility, structure and integrity. Alpha, beta and gamma actin isoforms have been identified, with alpha actins being a major constituent of the contractile apparatus, while beta and gamma actins are involved in the regulation of cell motility. This actin is an alpha actin that is found in skeletal muscle. Mutations in this gene cause nemaline myopathy type 3, congenital myopathy with excess of thin myofilaments, congenital myopathy with cores, and congenital myopathy with fiber-type disproportion, diseases that lead to muscle fiber defects. [provided by RefSeq]</p>
Other Designations	OTTHUMP00000036123 alpha skeletal muscle actin

Disease

- [Acute Disease](#)
- [Alzheimer disease](#)
- [Atherosclerosis](#)
- [Calcinosis](#)
- [Coronary Artery Disease](#)
- [Diabetes Mellitus](#)
- [Myocardial Infarction](#)
- [Parkinson disease](#)