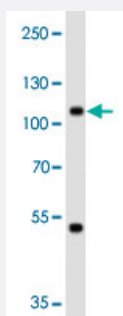


MAP4K3 monoclonal antibody, clone 219CT8.3.1

Catalog # MAB12312 Size 400 uL

Applications



Western Blot (Cell lysate)

Western blot analysis of MCF-7 cell line lysates reacted with MAP4K3 monoclonal antibody (Cat # MAB12312) at 1:1000 dilution.



Immunohistochemistry (Formalin/PFA-fixed paraffin-embedded sections)

Immunohistochemical staining of formalin-fixed and paraffin-embedded human skeletal muscle section reacted with MAP4K3 monoclonal antibody (Cat # MAB12312) at 1:100 dilution.

Specification

Product Description	Mouse monoclonal antibody raised against human MAP4K3.
Immunogen	Recombinant protein corresponding to human MAP4K3.
Host	Mouse
Reactivity	Human
Form	Liquid

Purification	Euglobulin precipitation
Isotype	IgM, kappa
Recommend Usage	Immunohistochemistry (1:100) Western Blot (1:100-1:500) The optimal working dilution should be determined by the end user.
Storage Buffer	In PBS (0.09% sodium azide)
Storage Instruction	Store at 4°C. For long term storage store at -20°C. Aliquot to avoid repeated freezing and thawing.
Note	This product contains sodium azide: a POISONOUS AND HAZARDOUS SUBSTANCE which should be handled by trained staff only.

Applications

- Western Blot (Cell lysate)

Western blot analysis of MCF-7 cell line lysates reacted with MAP4K3 monoclonal antibody (Cat # MAB12312) at 1:1000 dilution.

- Immunohistochemistry (Formalin/PFA-fixed paraffin-embedded sections)

Immunohistochemical staining of formalin-fixed and paraffin-embedded human skeletal muscle section reacted with MAP4K3 monoclonal antibody (Cat # MAB12312) at 1:100 dilution.

Gene Info — MAP4K3

Entrez GeneID	8491
Gene Name	MAP4K3
Gene Alias	GLK, MAPKKKK3, RAB8IPL1
Gene Description	mitogen-activated protein kinase kinase kinase kinase 3
Omim ID	604921
Gene Ontology	Hyperlink

Gene Summary

This gene encodes a member of the Ste20 family of serine/threonine protein kinases. The protein belongs to the subfamily that consists of members, such as germinal center kinase (GCK), that are characterized by an N-terminal catalytic domain and C-terminal regulatory domain. The kinase activity of the encoded protein can be stimulated by UV radiation and tumor necrosis factor- α . The protein specifically activates the c-Jun N-terminal kinase (JNK) signaling pathway. Evidence suggests that it functions upstream of mitogen-activated protein kinase kinase kinase 1 (MEKK1). This gene previously was referred to as RAB8-interacting protein-like 1 (RAB8IPL1), but it has been renamed mitogen-activated protein kinase kinase kinase 3 (MAP4K3). [provided by RefSeq]

Other Designations

germinal center kinase-like kinase|germinal center kinase-related protein kinase

Pathway

- [MAPK signaling pathway](#)

Disease

- [Cardiovascular Diseases](#)
- [Diabetes Mellitus](#)
- [Edema](#)
- [Tobacco Use Disorder](#)