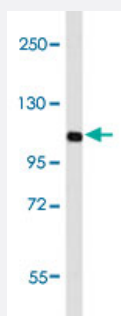


LAMP2 monoclonal antibody, clone 157CT16.6.6

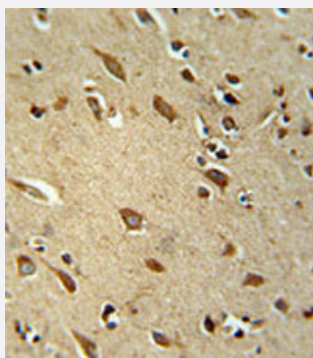
Catalog # MAB12304 Size 400 uL

Applications



Western Blot (Cell lysate)

Western blot analysis of mouse NIH-3T3 cell line lysates reacted with LAMP2 monoclonal antibody (Cat # MAB12304) at 1:16000 dilution.



Immunohistochemistry (Formalin/PFA-fixed paraffin-embedded sections)

Immunohistochemical staining of formalin-fixed and paraffin-embedded human brain tissue reacted with LAMP2 monoclonal antibody (Cat # MAB12304) at 1:50-1:100 dilution.

Specification

Product Description	Mouse monoclonal antibody raised against human LAMP2.
Immunogen	Recombinant protein corresponding to human LAMP2.
Host	Mouse
Reactivity	Human, Mouse
Form	Liquid
Purification	Protein G purification

Isotype	IgG1, kappa
Recommend Usage	ELISA Immunohistochemistry (1:500) Immunofluorescence (1:10~50) Western Blot (1:2000-8000) The optimal working dilution should be determined by the end user.
Storage Buffer	In PBS (0.09% sodium azide).
Storage Instruction	Store at 4°C. For long term storage store at -20°C. Aliquot to avoid repeated freezing and thawing.
Note	This product contains sodium azide: a POISONOUS AND HAZARDOUS SUBSTANCE which should be handled by trained staff only.

Applications

- Western Blot (Cell lysate)

Western blot analysis of mouse NIH-3T3 cell line lysates reacted with LAMP2 monoclonal antibody (Cat # MAB12304) at 1:16000 dilution.

- Immunohistochemistry (Formalin/PFA-fixed paraffin-embedded sections)

Immunohistochemical staining of formalin-fixed and paraffin-embedded human brain tissue reacted with LAMP2 monoclonal antibody (Cat # MAB12304) at 1:50-1:100 dilution.

- Immunofluorescence

- Enzyme-linked Immunoabsorbent Assay

Gene Info — LAMP2

Entrez GeneID	3920
Protein Accession#	NP_054701.1; P13473
Gene Name	LAMP2
Gene Alias	CD107b, LAMPB, LGP110
Gene Description	lysosomal-associated membrane protein 2
Omim ID	300257 309060

Gene Ontology

[Hyperlink](#)

Gene Summary

The protein encoded by this gene is a member of a family of membrane glycoproteins. This glyco protein provides selectins with carbohydrate ligands. It may play a role in tumor cell metastasis. It may also function in the protection, maintenance, and adhesion of the lysosome. Alternative splicing of this gene results in multiple transcript variants encoding distinct proteins. [provided by RefSeq]

Other Designations

OTTHUMP00000023943|OTTHUMP00000023944|lysosome-associated membrane protein 2

Pathway

- [Lysosome](#)

Disease

- [Cardiomegaly](#)
- [Cardiomyopathy](#)
- [Cardiovascular Diseases](#)
- [Diabetes Mellitus](#)
- [Edema](#)
- [Genetic Predisposition to Disease](#)