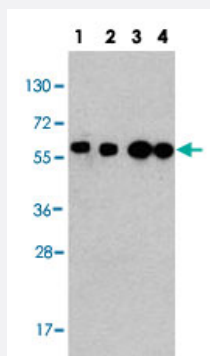


BECN1 monoclonal antibody, clone 15CT26

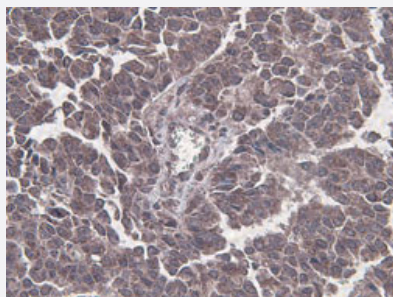
Catalog # MAB12283 Size 400 uL

Applications



Western Blot (Cell lysate)

Western blot analysis of Lane 1: HepG2 whole cell lysates Lane 2: 293 whole cell lysates Lane 3: Jurkat cell lysates Lane 4: Hela cell line lysates reacted with BECN1 monoclonal antibody (Cat # MAB12283) at 1:2000 dilution.



Immunohistochemistry (Formalin/PFA-fixed paraffin-embedded sections)

Immunohistochemical staining of breast CA section reacted with BECN1 monoclonal antibody (Cat # MAB12283) at 1:50 dilution.

Specification

| | |
|----------------------------|---|
| Product Description | Mouse monoclonal antibody raised against full length recombinant human BECN1. |
| Immunogen | Recombinant His fusion protein corresponding to full length human BECN1. |
| Host | Mouse |
| Reactivity | Human |
| Form | Liquid |
| Purification | Saturated Ammonium Sulfate (SAS) precipitation |

| | |
|---------------------|---|
| Isotype | IgM, kappa |
| Recommend Usage | ELISA Flow Cytometry (1:10~50) Immunohistochemistry (1:50-1:100) Western Blot (1:1000) The optimal working dilution should be determined by the end user. |
| Storage Buffer | In ascites (0.09% sodium azide). |
| Storage Instruction | Store at 4°C. For long term storage store at -20°C. Aliquot to avoid repeated freezing and thawing. |
| Note | This product contains sodium azide: a POISONOUS AND HAZARDOUS SUBSTANCE which should be handled by trained staff only. |

Applications

- Western Blot (Cell lysate)

Western blot analysis of Lane 1: HepG2 whole cell lysates Lane 2: 293 whole cell lysates Lane 3: Jurkat cell lysates Lane 4: HeLa cell line lysates reacted with BECN1 monoclonal antibody (Cat # MAB12283) at 1:2000 dilution.

- Immunohistochemistry (Formalin/PFA-fixed paraffin-embedded sections)

Immunohistochemical staining of breast CA section reacted with BECN1 monoclonal antibody (Cat # MAB12283) at 1:50 dilution.

- Enzyme-linked Immunoabsorbent Assay

- Flow Cytometry

Gene Info — BECN1

| | |
|--------------------|-----------------------------|
| Entrez GeneID | 8678 |
| Protein Accession# | Q14457 |
| Gene Name | BECN1 |
| Gene Alias | ATG6, VPS30, beclin1 |
| Gene Description | beclin 1, autophagy related |
| Omim ID | 604378 |

Gene Ontology[Hyperlink](#)**Gene Summary**

O

Other Designations

ATG6 autophagy related 6 homolog|beclin 1|beclin 1 (coiled-coil, moesin-like BCL2 interacting protein)|beclin 1 (coiled-coil, moesin-like BCL2-interacting protein)

Pathway

- [Regulation of autophagy](#)

Disease

- [Alzheimer disease](#)
- [Huntington Disease](#)