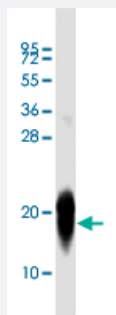


# MAP1LC3A monoclonal antibody, clone 166AT1234

Catalog # MAB12280      Size 200 uL

## Applications



### Western Blot (Recombinant protein)

Western blot analysis of MAP1LC3A recombinant protein reacted with MAP1LC3A monoclonal antibody, clone 166AT1234 (Cat # MAB12280) at 1:5000 dilution.

## Specification

**Product Description** Mouse monoclonal antibody raised against full length recombinant human MAP1LC3A.

**Immunogen** Recombinant protein corresponding to full length human MAP1LC3A.

**Host** Mouse

**Reactivity** Human, Mouse, Rat

**Form** Liquid

**Purification** Protein G purification

**Isotype** IgG1, Kappa

**Recommend Usage** Western Blot (1:2000)  
The optimal working dilution should be determined by the end user.

**Storage Buffer** In PBS (0.09% sodium azide).

**Storage Instruction** Store at 4°C. for up to 2 weeks. For long term storage store at -20°C.  
Aliquot to avoid repeated freezing and thawing.

**Note**

This product contains sodium azide: a POISONOUS AND HAZARDOUS SUBSTANCE which should be handled by trained staff only.

## Applications

- Western Blot (Recombinant protein)

Western blot analysis of MAP1LC3A recombinant protein reacted with MAP1LC3A monoclonal antibody, clone 166AT1234 (Cat # MAB12280) at 1:5000 dilution.

## Gene Info — MAP1LC3A

**Entrez GeneID** [84557](#)

**Gene Name** MAP1LC3A

**Gene Alias** LC3, LC3A, MAP1ALC3, MAP1BLC3

**Gene Description** microtubule-associated protein 1 light chain 3 alpha

**Omim ID** [601242](#)

**Gene Ontology** [Hyperlink](#)

**Gene Summary** MAP1A and MAP1B are microtubule-associated proteins which mediate the physical interactions between microtubules and components of the cytoskeleton. MAP1A and MAP1B each consist of a heavy chain subunit and multiple light chain subunits. The protein encoded by this gene is one of the light chain subunits and can associate with either MAP1A or MAP1B. Two transcript variants encoding different isoforms have been found for this gene. [provided by RefSeq]

**Other Designations** MAP1 light chain 3-like protein 1|MAP1A/1B light chain 3 A|MAP1A/MAP1B LC3 A|OTTHUMP0000030696|OTTHUMP00000030697|OTTHUMP00000030698|microtubule-associated proteins 1A/1B light chain 3